

ISO/ABMA BASIC LOAD RATINGS		
Rating	Newtons	Lbs
DYNAMIC	46,580	10,472
STATIC	92,630	20,824

TRACK ROLLER LOAD RATINGS		
RATING	Newtons	Lbs
DYNAMIC	38,840	8,732
STATIC	65,400	14,703

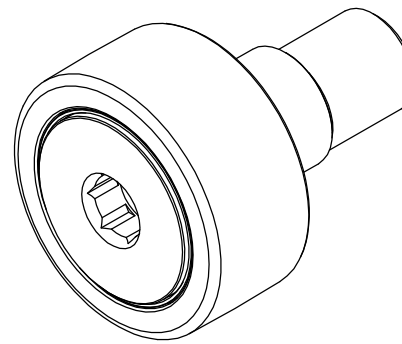
MAXIMUM CLAMPING TORQUE		
Thread Type	Nm	Inch Lbs
DRY	216	1912
LUBRICATED	108	956

RECOMMENDED MOUNTING HOLE Ø		
Limit	mm	Inch
MIN	28.050	1.1043
MAX	28.075	1.1053

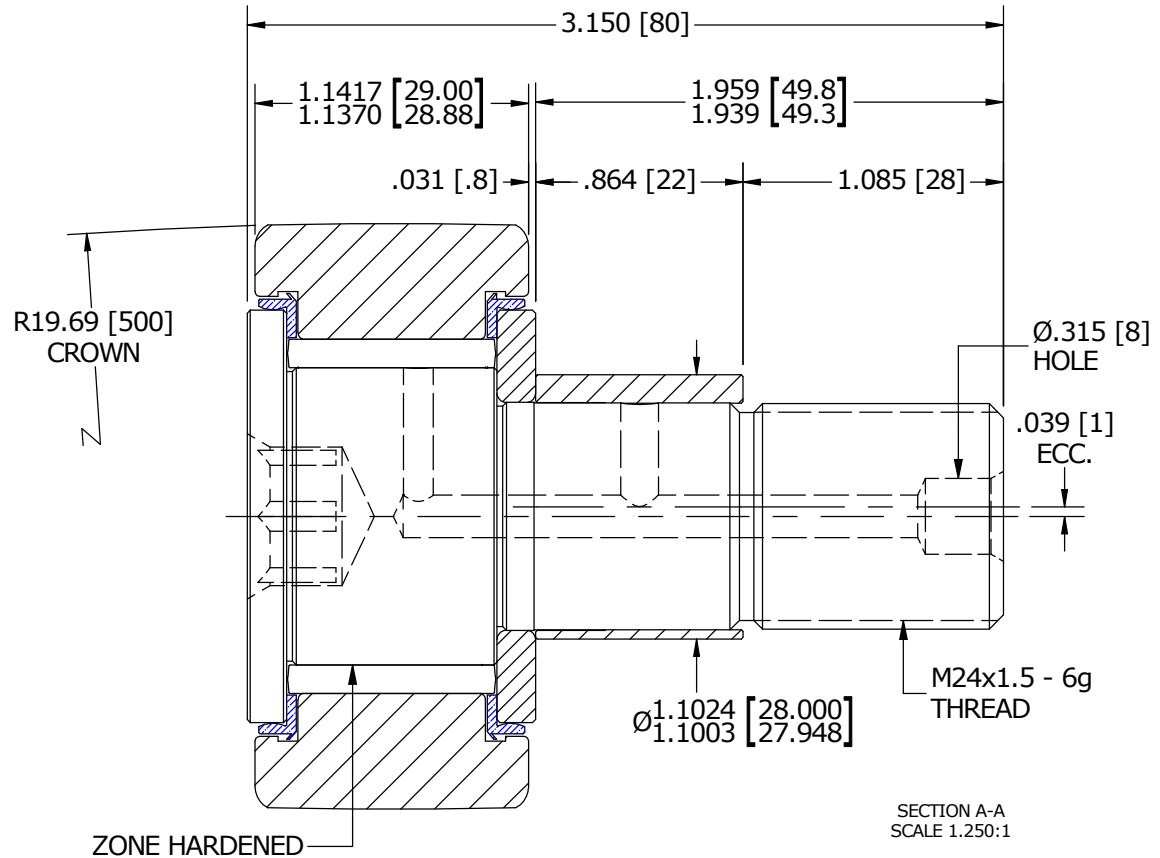
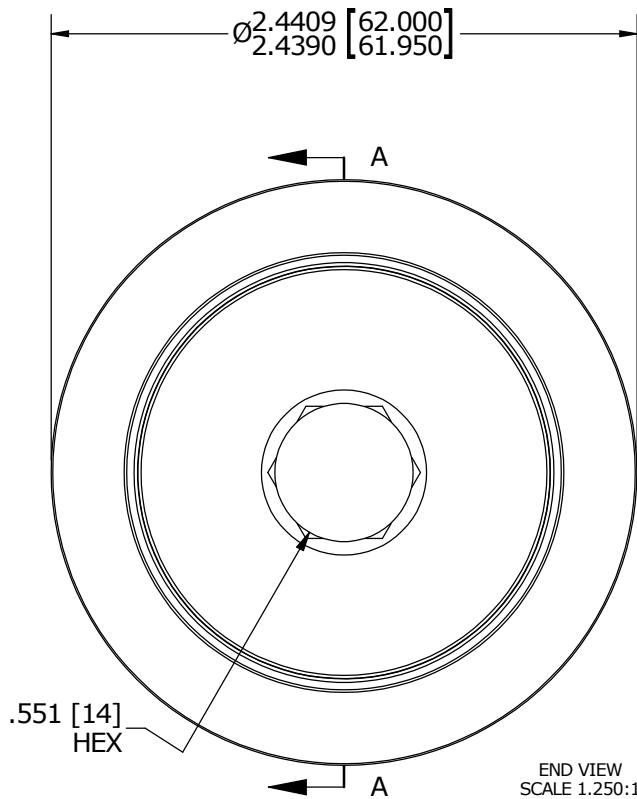
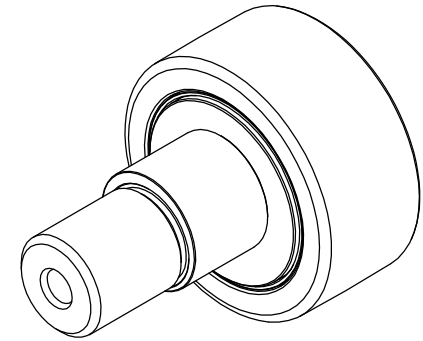
NOTES:

- BEARING IS PACKED WITH NLGI GRADE 2, LITHIUM BASED GREASE (UNLESS OTHERWISE SPECIFIED)
- ALL EXPOSED STEEL SURFACES HAVE BLACK OXIDE
- LIMITING SPEEDS:
 - GREASE = 2,100 RPM
 - OIL = 2,700 RPM

MS NO. _____ NSN NO. _____ DRAWING NO. MCNBE-62-SB



ISO VIEWS
SCALE .625:1



MATERIAL NOTES:

OUTER RACE - BEARING STEEL, HEAT TREATED
 STUD - BEARING STEEL, ZONE HARDENED
 NEEDLE ROLLER - BEARING STEEL, HEAT TREATED
 WASHER - COLD ROLLED STEEL, HEAT TREATED
 ECCENTRIC SLEEVE - COLD ROLLED STEEL
 SEAL - SYNTHETIC

CUSTOMER PART#

XX = ± .01
 XXX = ± .005
 XXXX = ± .0005
 ANGLES = ± 1'
 INCH [METRIC]
 FRACTION = ± 1/32

CARTER MANUFACTURING IS NOT RESPONSIBLE FOR TYPOGRAPHICAL ERRORS

CARTER MANUFACTURING CO., INC.
 GRAND HAVEN, MICHIGAN 49417

ENGINEERING CHANGE ORDER NOTE

REVISION

PART NAME: ASSEMBLY

REVISION	AUTHOR BY	DRAWN BY	CHK'D BY	SALES	MATERIAL
A	HG	SGW	MD	KR	NOTED
REVISION BY	DATE	DATE	DATE	DATE	SHEET
SGW	12/12/2015	11/16/2015	11/23/2015	11/19/2015	1 OF 2