

ISO/ABMA BASIC LOAD RATINGS		
Rating	Newtons	Lbs
DYNAMIC	20,300	4,564
STATIC	34,130	7,673

TRACK ROLLER LOAD RATINGS		
RATING	Newtons	Lbs
DYNAMIC	16,970	3,815
STATIC	28,500	6,407

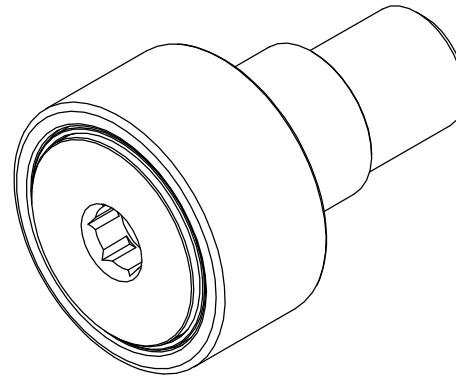
MAXIMUM CLAMPING TORQUE		
Thread Type	Nm	Inch Lbs
DRY	57	504
LUBRICATED	28.5	252

RECOMMENDED MOUNTING HOLE Ø		
Limit	mm	Inch
MIN	20.050	.7894
MAX	20.075	.7904

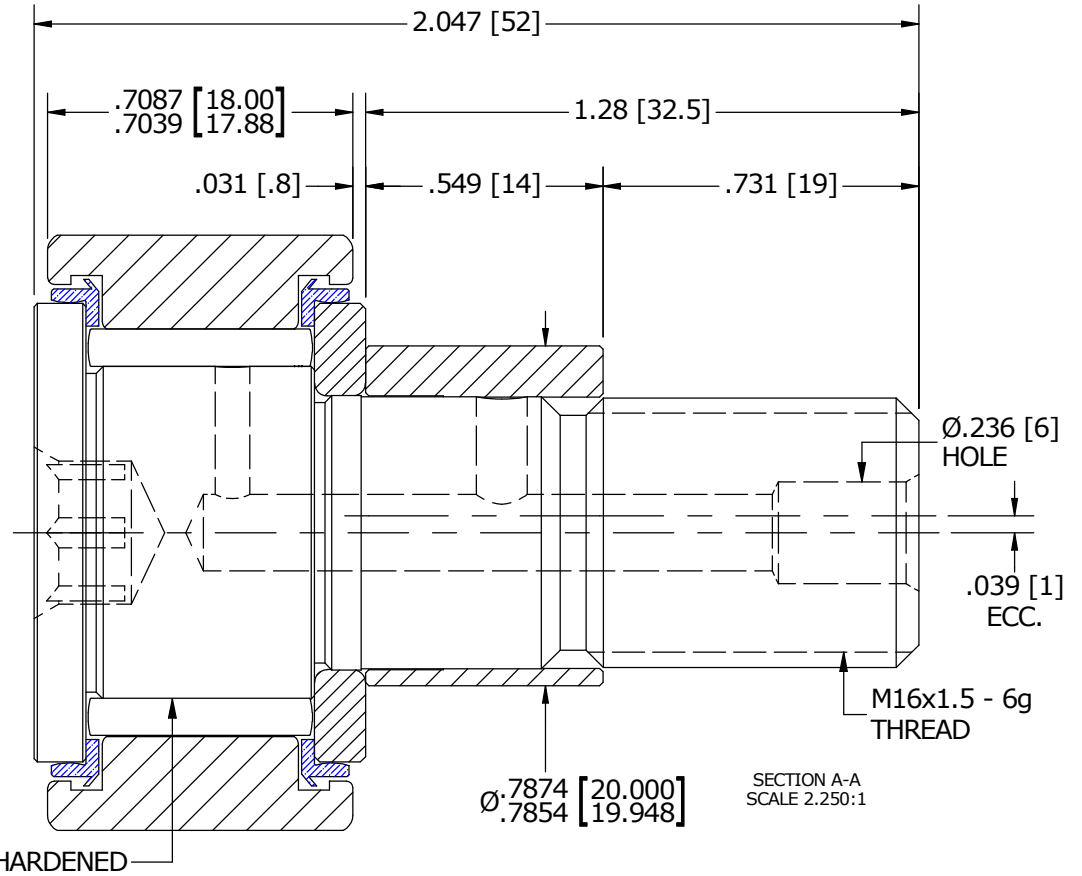
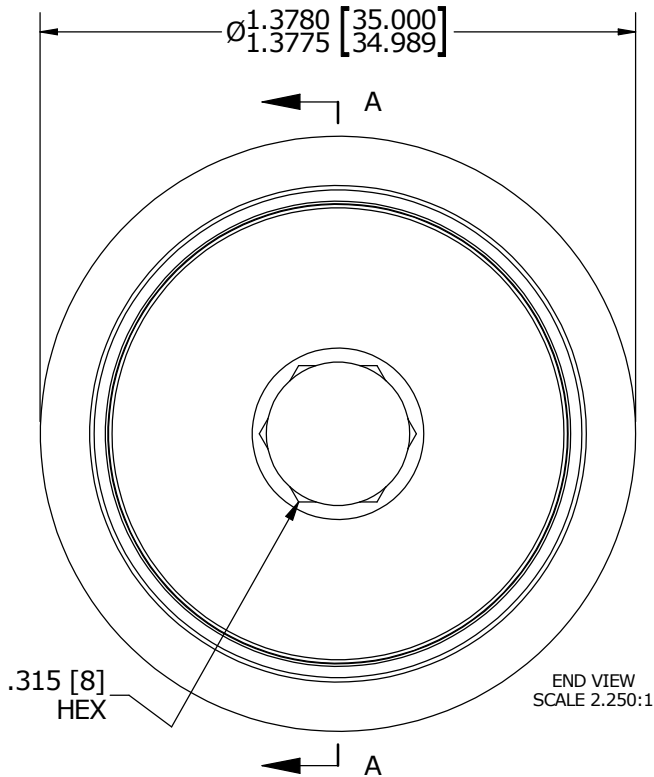
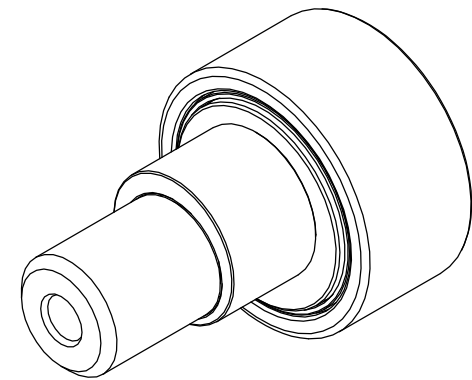
NOTES:

- BEARING IS PACKED WITH NLGI GRADE 2, LITHIUM BASED GREASE (UNLESS OTHERWISE SPECIFIED)
- ALL EXPOSED STEEL SURFACES HAVE BLACK OXIDE
- LIMITING SPEEDS:
 - GREASE = 4,200 RPM
 - OIL = 5,500 RPM

MS NO. _____ NSN NO. _____ DRAWING NO. MCNBE-35-SBX



ISO VIEWS
SCALE 1.125:1



MATERIAL NOTES:

OUTER RACE - BEARING STEEL, HEAT TREATED
 STUD - BEARING STEEL, ZONE HARDENED
 NEEDLE ROLLER - BEARING STEEL, HEAT TREATED
 WASHER - COLD ROLLED STEEL, HEAT TREATED
 ECCENTRIC SLEEVE - COLD ROLLED STEEL
 SEAL - SYNTHETIC

CUSTOMER PART#

XX = ± .01
 XXX = ± .005
 XXXX = ± .0005
 ANGLES = ± 1'
 INCH [METRIC]
 FRACTION = ± 1/32

CARTER MANUFACTURING IS NOT RESPONSIBLE FOR TYPOGRAPHICAL ERRORS

CARTER MANUFACTURING CO., INC.
 GRAND HAVEN, MICHIGAN 49417

ENGINEERING CHANGE ORDER NOTE

REVISION

PART NAME: ASSEMBLY

A

AUTHOR BY

DRAWN BY

CHK'D BY

SALES

MATERIAL

HG

SGW

MD

KR

NOTED

REVISION BY

DATE

DATE

DATE

DATE

SHEET

SGW

12/12/2015

11/13/2015

11/23/2015

11/16/2015

1 OF 2