

ISO/ABMA BASIC LOAD RATINGS		
Rating	Newtons	Lbs
DYNAMIC	13,240	2,976
STATIC	18,140	4,078

TRACK ROLLER LOAD RATINGS		
RATING	Newtons	Lbs
DYNAMIC	11,080	2,491
STATIC	15,300	3,440

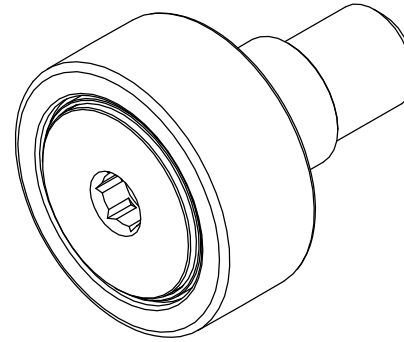
MAXIMUM CLAMPING TORQUE			
Thread Type	Nm	Inch Lbs	
DRY	22	195	
LUBRICATED	11	97.5	

RECOMMENDED MOUNTING HOLE Ø			
Limit	mm	Inch	
MIN	15.050	.5925	
MAX	15.075	.5935	

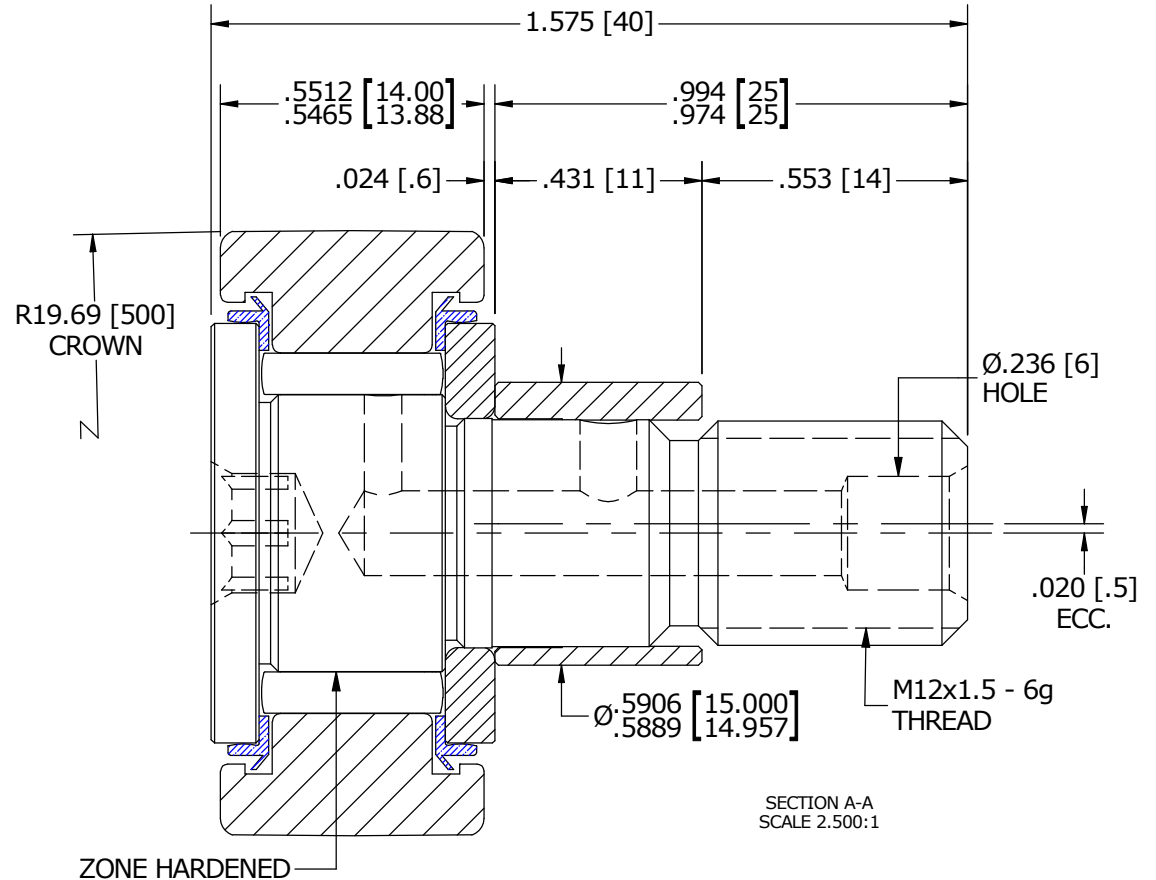
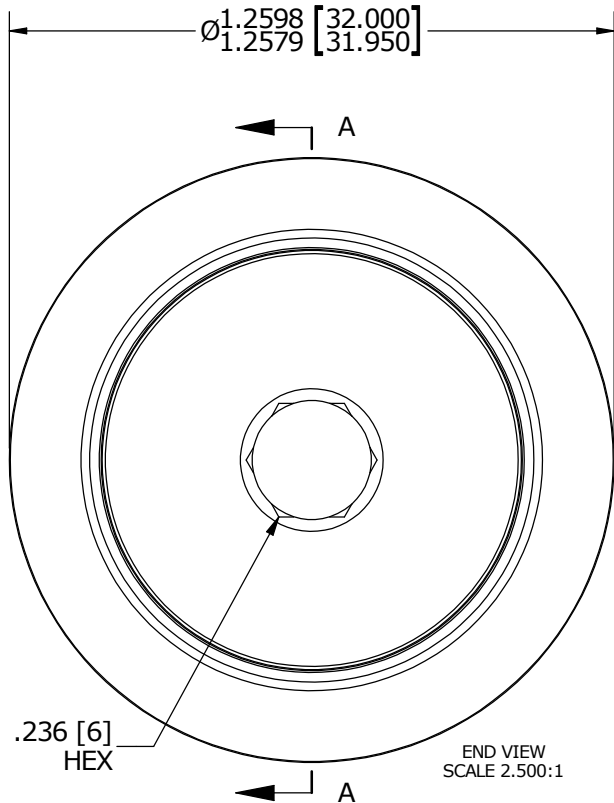
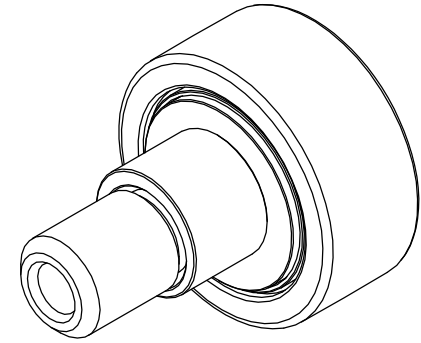
NOTES:

- BEARING IS PACKED WITH NLGI GRADE 2, LITHIUM BASED GREASE (UNLESS OTHERWISE SPECIFIED)
- ALL EXPOSED STEEL SURFACES HAVE BLACK OXIDE
- LIMITING SPEEDS:
 - GREASE = 6,400 RPM
 - OIL = 8,300 RPM

MS NO. _____ NSN NO. _____ DRAWING NO. MCNBE-32-SB



ISO VIEWS
SCALE 1.250:1



MATERIAL NOTES:

- OUTER RACE - BEARING STEEL, HEAT TREATED
- STUD - BEARING STEEL, ZONE HARDENED
- NEEDLE ROLLER - BEARING STEEL, HEAT TREATED
- WASHER - COLD ROLLED STEEL, HEAT TREATED
- ECCENTRIC SLEEVE - COLD ROLLED STEEL
- SEAL - SYNTHETIC

CUSTOMER PART#

XX = ± .01
 XXX = ± .005
 XXXX = ± .0005
 ANGLES = ± 1'
 INCH [METRIC]
 FRACTION = ± 1/32

CARTER MANUFACTURING IS NOT RESPONSIBLE FOR TYPOGRAPHICAL ERRORS

CARTER MANUFACTURING CO., INC.
 GRAND HAVEN, MICHIGAN 49417

ENGINEERING CHANGE ORDER NOTE

REVISION

PART NAME: ASSEMBLY

B

AUTHOR BY

DRAWN BY

CHK'D BY

SALES

MATERIAL

HG

SGW

MD

KR

NOTED

REVISION BY

DATE

DATE

DATE

DATE

SHEET

SGW

12/12/2015

7/3/2014

11/23/2015

11/13/2015

1 OF 2