

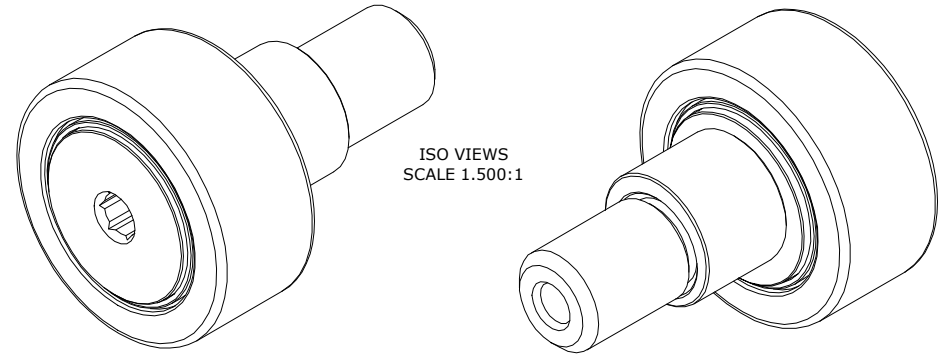
ISO/ABMA BASIC LOAD RATINGS		
Rating	Newtons	Lbs
DYNAMIC	9,410	2,115
STATIC	12,360	2,779

TRACK ROLLER LOAD RATINGS		
RATING	Newtons	Lbs
DYNAMIC	7,850	1,765
STATIC	10,400	2,338

MAXIMUM CLAMPING TORQUE**		
Thread Type	Nm	Inch Lbs
LUBRICATED	7.5	66.40

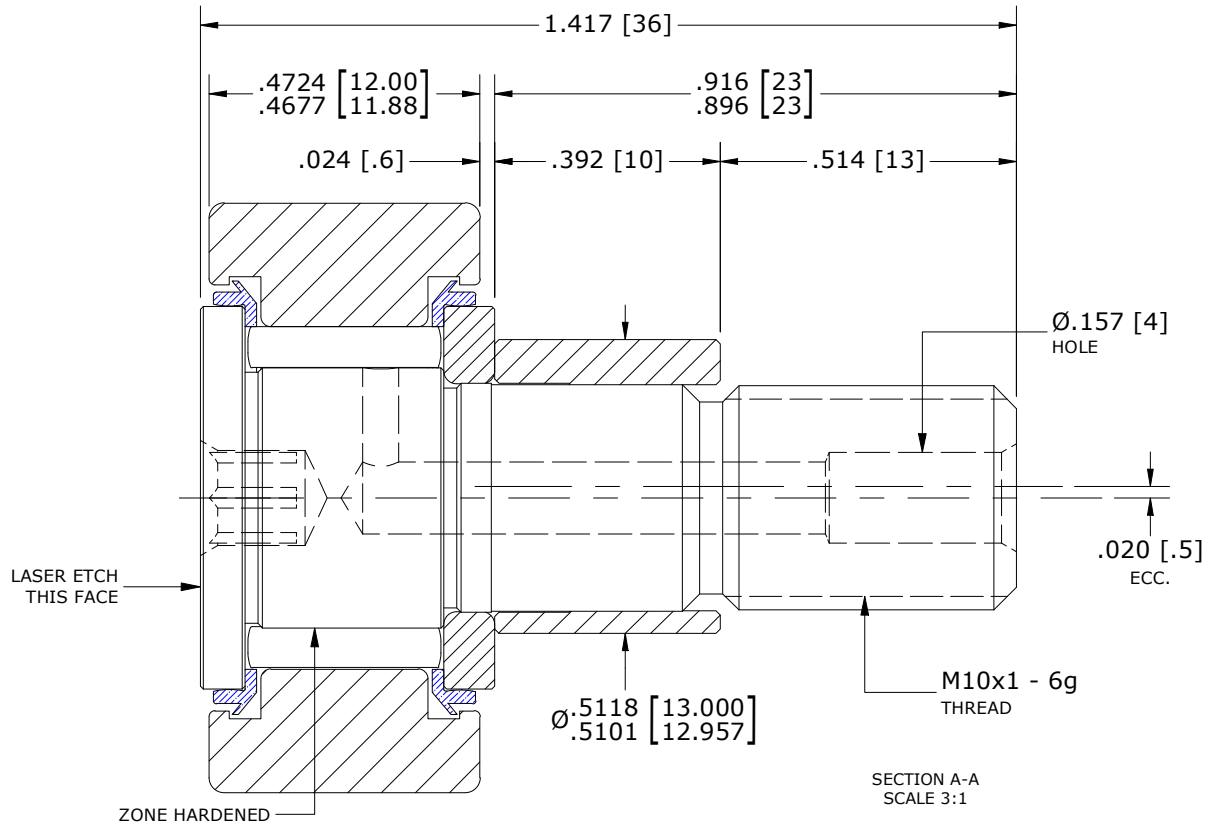
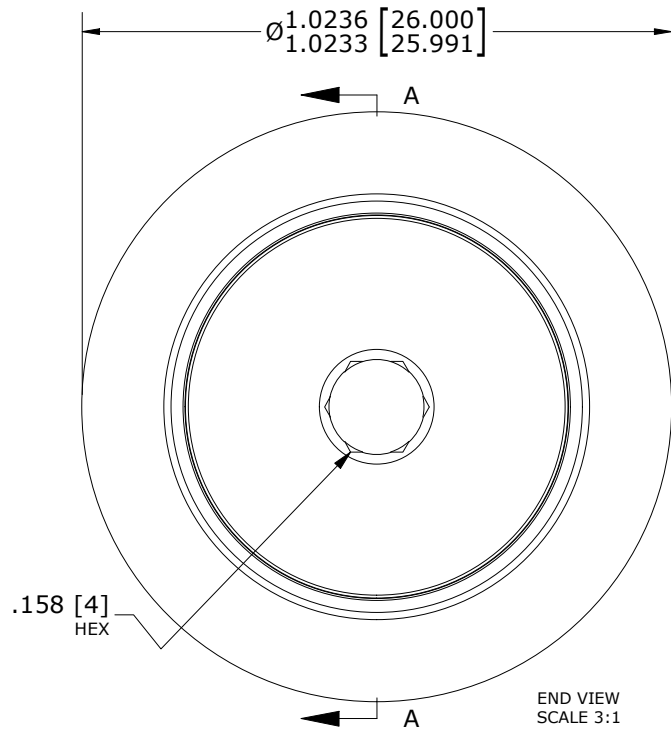
RECOMMENDED MOUNTING HOLE Ø		
Limit	mm	Inch
MIN	13.050	.5138
MAX	13.075	.5148

MS NO. _____ NSN NO. _____ DRAWING NO. MCNBE-26-SBX



ISO VIEWS
SCALE 1.500:1

- NOTES:
1. BEARING IS PACKED WITH NLGI GRADE 2, LITHIUM BASED GREASE (UNLESS OTHERWISE SPECIFIED).
 2. ALL EXPOSED SURFACES HAVE BLACK OXIDE.
 3. CUSTOM LASER ETCHING AVAILABLE UPON REQUEST.
 4. LIMITING SPEEDS:
 - A. GREASE = 9,000 RPM
 - B. OIL = 11,500 RPM



**TORQUE SPECIFICATION IS BASED ON LUBRICATED THREADS, IF USING DRY THREADS DOUBLE TORQUE VALUE

MATERIAL NOTES:

- OUTER RING - BEARING STEEL, HEAT TREATED
- STUD - BEARING STEEL, ZONE HARDENED
- NEEDLE ROLLER(S) - BEARING STEEL, HEAT TREATED
- WASHER - BEARING STEEL, HEAT TREATED
- SEAL(S) - SYNTHETIC
- ECCENTRIC SLEEVE - STEEL

CUSTOMER PART#
XX = ± .01
XXX = ± .005
XXXX = ± .0005
ANGLES = ± 1'
INCH (METRIC)
FRACTION = ± 1/32

CARTER MANUFACTURING IS NOT RESPONSIBLE FOR TYPOGRAPHICAL ERRORS

CARTER MANUFACTURING CO., INC.
GRAND HAVEN, MICHIGAN 49417

ENGINEERING CHANGE ORDER NOTE

REVISION		PART NAME: ASSEMBLY			PRODUCT TYPE: MCNB	
B	AUTHOR BY HG	DRAWN BY SGW	CHK'D BY MD	SALES NC	MATERIAL NOTED	
REVISION BY SGW	DATE 3/16/2021	DATE 11/23/2010	DATE 3/16/2021	DATE 3/17/2021	SHEET 1 OF 2	