

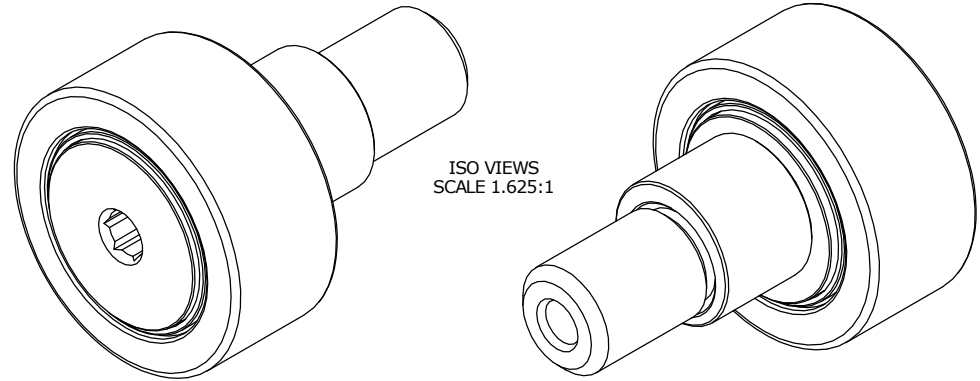
ISO/ABMA BASIC LOAD RATINGS		
Rating	Newtons	Lbs
DYNAMIC	9,410	2,115
STATIC	12,360	2,779

TRACK ROLLER LOAD RATINGS		
RATING	Newtons	Lbs
DYNAMIC	7,850	1,765
STATIC	10,400	2,338

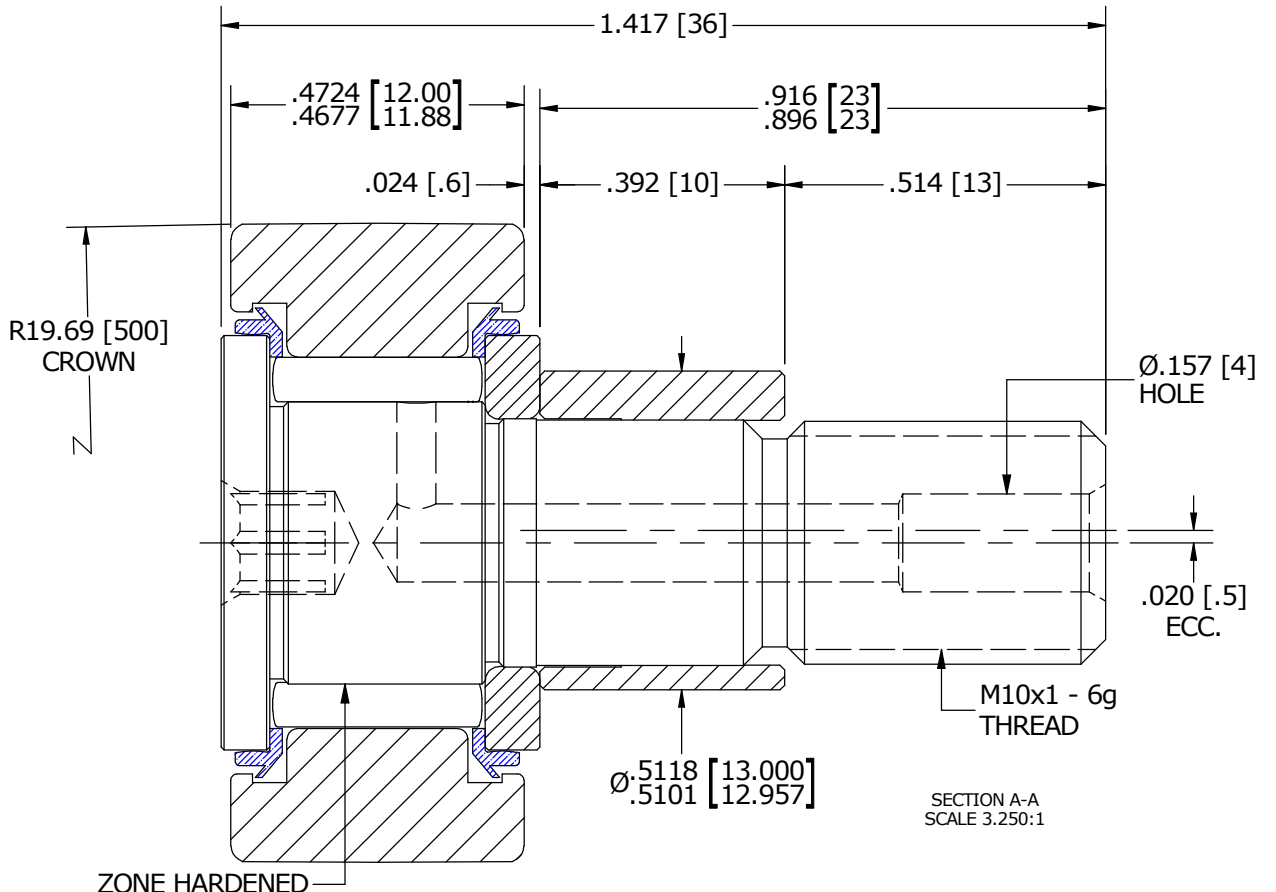
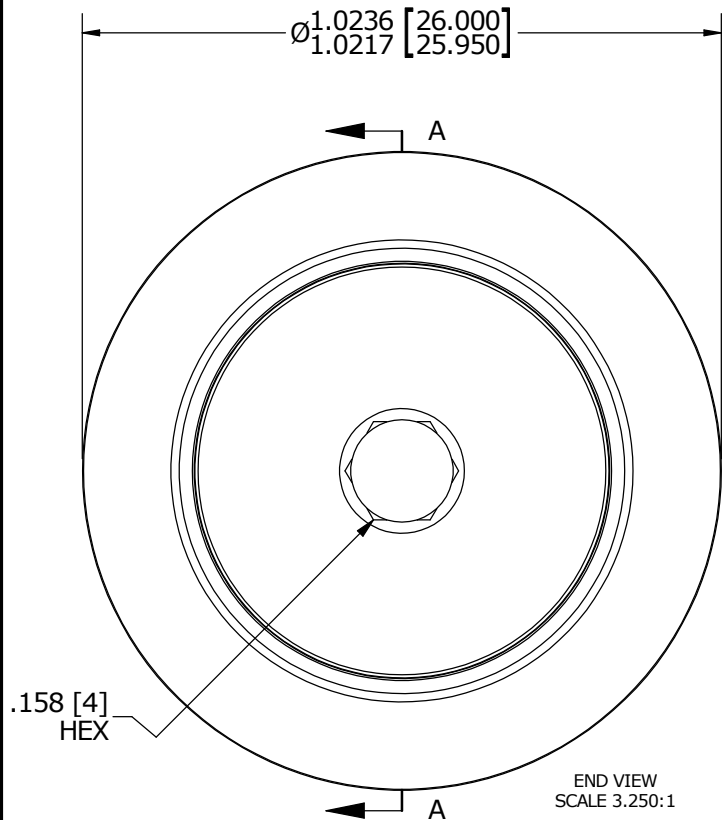
MAXIMUM CLAMPING TORQUE		
Thread Type	Nm	Inch Lbs
DRY	15	132.76
LUBRICATED	7.5	66.40

RECOMMENDED MOUNTING HOLE Ø		
Limit	mm	Inch
MIN	13.050	.5138
MAX	13.075	.5148

MS NO. _____ NSN NO. _____ DRAWING NO. MCNBE-26-SB



- NOTES:
1. BEARING IS PACKED WITH NLGI GRADE 2, LITHIUM BASED GREASE (UNLESS OTHERWISE SPECIFIED)
 2. ALL EXPOSED STEEL SURFACES HAVE BLACK OXIDE
 3. LIMITING SPEEDS:
 - A. GREASE = 9,000 RPM
 - B. OIL = 11,500 RPM



MATERIAL NOTES:

OUTER RACE - BEARING STEEL, HEAT TREATED
 STUD - BEARING STEEL, ZONE HARDENED
 NEEDLE ROLLER - BEARING STEEL, HEAT TREATED
 WASHER - COLD ROLLED STEEL, HEAT TREATED
 SEAL - SYNTHETIC
 ECCENTRIC SLEEVE - COLD ROLLED STEEL

CUSTOMER PART#

XX = ± .01
 XXX = ± .005
 XXXX = ± .0005
 ANGLES = ± 1'
 INCH [METRIC]
 FRACTION = ± 1/32

CARTER MANUFACTURING IS NOT RESPONSIBLE FOR TYPOGRAPHICAL ERRORS

CARTER MANUFACTURING CO., INC.
 GRAND HAVEN, MICHIGAN 49417

ENGINEERING CHANGE ORDER NOTE

REVISION

PART NAME: ASSEMBLY

REVISION	AUTHOR BY	DRAWN BY	CHK'D BY	SALES	MATERIAL
C	HG	SGW	MD	KR	NOTED
REVISION BY	DATE	DATE	DATE	DATE	SHEET
SGW	12/12/2015	11/12/2015	11/23/2015	11/12/2015	1 OF 2