

ISO/ABMA BASIC LOAD RATINGS		
Rating	Newtons	Lbs
DYNAMIC	9,410	2,115
STATIC	12,360	2,779

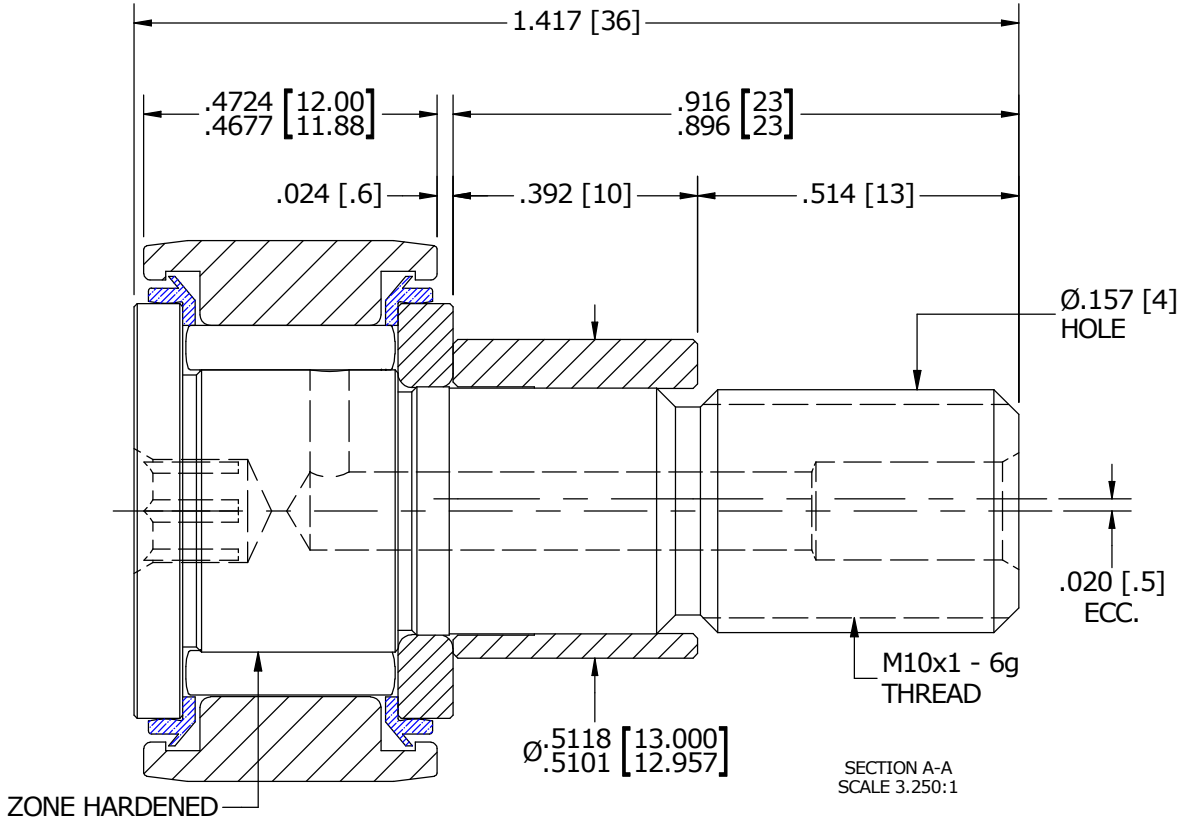
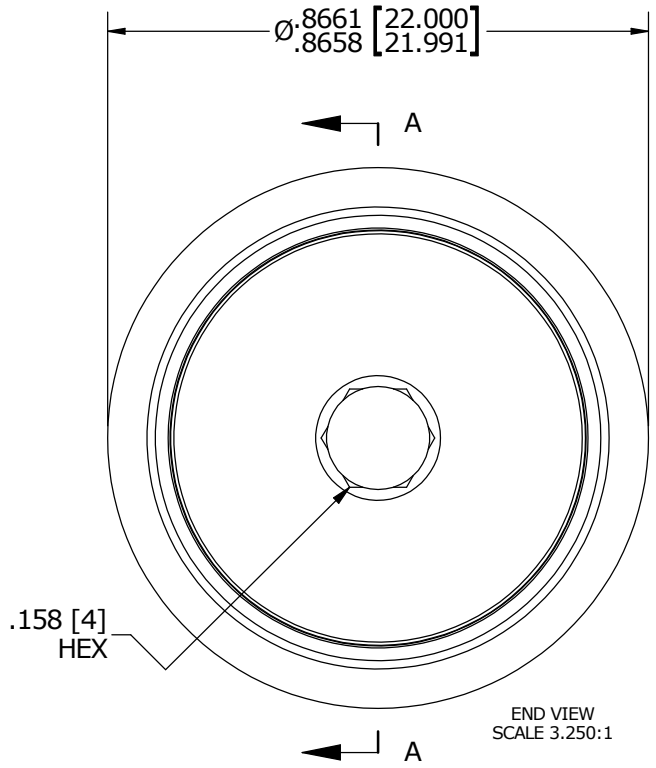
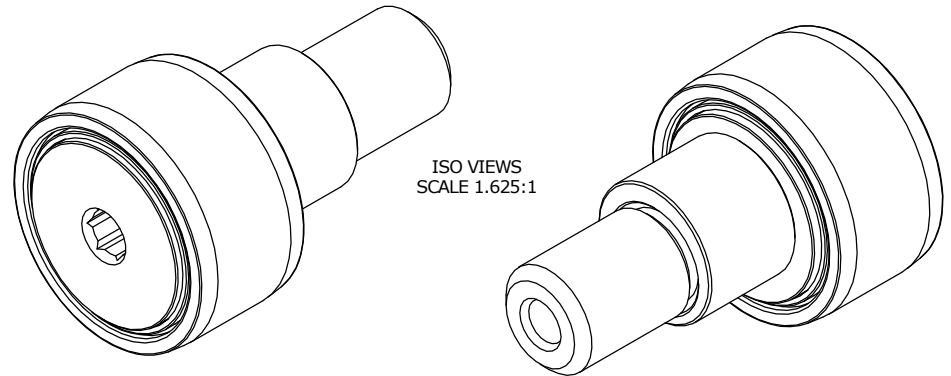
TRACK ROLLER LOAD RATINGS		
RATING	Newtons	Lbs
DYNAMIC	7,850	1,765
STATIC	10,400	2,338

MAXIMUM CLAMPING TORQUE		
Thread Type	Nm	Inch Lbs
DRY	15	132.76
LUBRICATED	7.5	66.40

RECOMMENDED MOUNTING HOLE Ø		
Limit	mm	Inch
MIN	13.050	.5138
MAX	13.075	.5148

- NOTES:
1. BEARING IS PACKED WITH NLGI GRADE 2, LITHIUM BASED GREASE (UNLESS OTHERWISE SPECIFIED)
  2. ALL EXPOSED STEEL SURFACES HAVE BLACK OXIDE
  3. LIMITING SPEEDS:
    - A. GREASE = 9,000 RPM
    - B. OIL = 11,500 RPM

MS NO. \_\_\_\_\_ NSN NO. \_\_\_\_\_ DRAWING NO. MCNBE-22-SBX



MATERIAL NOTES:

OUTER RACE - BEARING STEEL, HEAT TREATED  
 STUD - BEARING STEEL, ZONE HARDENED  
 NEEDLE ROLLER - BEARING STEEL, HEAT TREATED  
 WASHER - COLD ROLLED STEEL, HEAT TREATED  
 SEAL - SYNTHETIC  
 ECCENTRIC SLEEVE - COLD ROLLED STEEL

CUSTOMER PART# \_\_\_\_\_

XX = ± .01  
 XXX = ± .005  
 XXXX = ± .0005  
 ANGLES = ± 1'  
 INCH [METRIC]  
 FRACTION = ± 1/32

ENGINEERING CHANGE ORDER NOTE

CARTER MANUFACTURING IS NOT RESPONSIBLE FOR TYPOGRAPHICAL ERRORS

**CARTER MANUFACTURING CO., INC.**  
 GRAND HAVEN, MICHIGAN 49417

REVISION		PART NAME: ASSEMBLY			
A	AUTHOR BY	DRAWN BY	CHK'D BY	SALES	MATERIAL
	HG	SGW	MD	KR	NOTED
REVISION BY	DATE	DATE	DATE	DATE	SHEET
SGW	12/12/2015	11/12/2015	11/23/2015	11/11/2015	1 OF 2