

ISO/ABMA BASIC LOAD RATINGS		
Rating	Newtons	Lbs
DYNAMIC	6,960	1,565
STATIC	8,340	1,875

TRACK ROLLER LOAD RATINGS		
RATING	Newtons	Lbs
DYNAMIC	5,790	1,302
STATIC	2,350	528

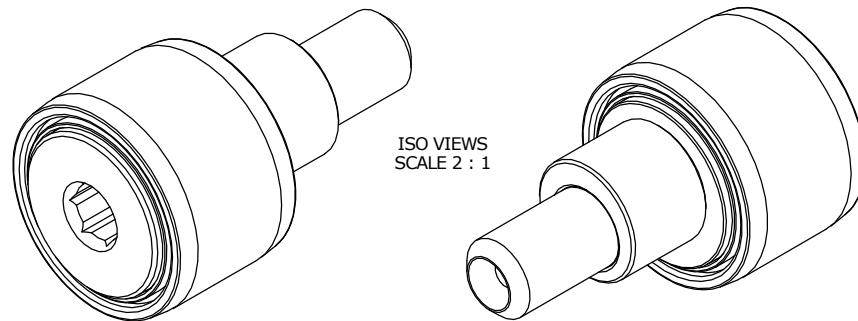
MAXIMUM CLAMPING TORQUE		
Thread Type	Nm	Inch Lbs
DRY	3	26.50
LUBRICATED	1.5	13.25

RECOMMENDED MOUNTING HOLE Ø		
Limit	mm	Inch
MIN	9.050	.3563
MAX	9.075	.3573

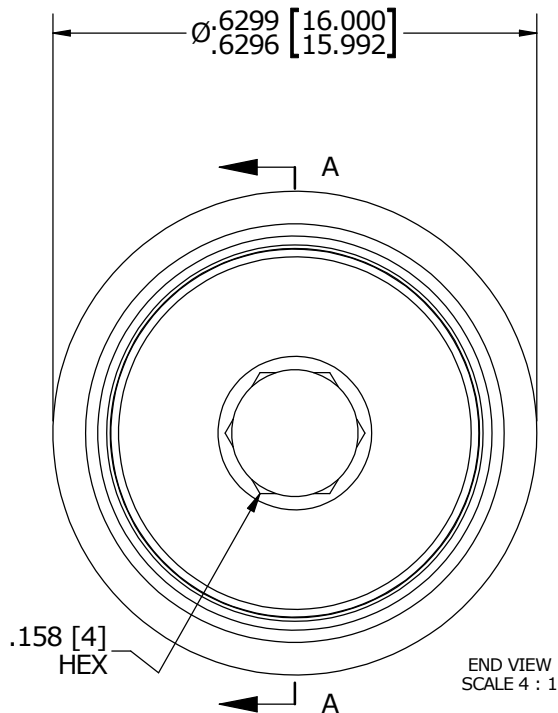
NOTES:

- BEARING IS PACKED WITH NLGI GRADE 2, LITHIUM BASED GREASE (UNLESS OTHERWISE SPECIFIED)
- ALL EXPOSED STEEL SURFACES HAVE BLACK OXIDE
- LIMITING SPEEDS:
  - GREASE = 13,000 RPM
  - OIL = 17,000 RPM

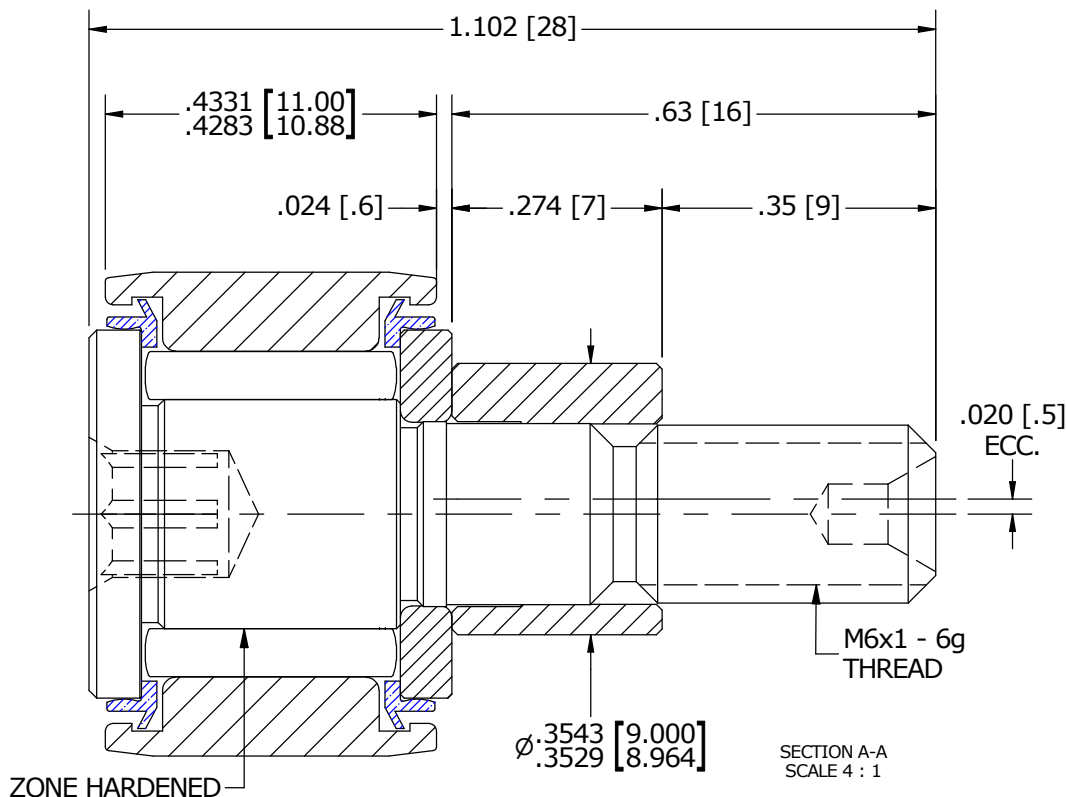
MS NO.	NSN NO.	DRAWING NO.
--------	---------	-------------



ISO VIEWS  
SCALE 2 : 1



END VIEW  
SCALE 4 : 1



SECTION A-A  
SCALE 4 : 1

MATERIAL NOTES:

OUTER RACE - BEARING STEEL, HEAT TREATED  
 STUD - BEARING STEEL, ZONE HARDENED  
 NEEDLE ROLLER - BEARING STEEL, HEAT TREATED  
 WASHER - COLD ROLLED STEEL, HEAT TREATED  
 SEAL - SYNTHETIC

CUSTOMER PART#

XX = ± .01  
 XXX = ± .005  
 XXXX = ± .0005  
 ANGLES = ± 1'  
 INCH [METRIC]  
 FRACTION = ± 1/32

CARTER MANUFACTURING IS NOT RESPONSIBLE FOR TYPOGRAPHICAL ERRORS

**CARTER MANUFACTURING CO., INC.**

GRAND HAVEN, MICHIGAN 49417

REVISION

PART NAME: ASSEMBLY

ENGINEERING CHANGE ORDER NOTE

REVISION	AUTHOR BY	DRAWN BY	CHK'D BY	SALES	MATERIAL
A	HG	SGW	MD	KR	NOTED
REVISION BY	DATE	DATE	DATE	DATE	SHEET
SGW	11/12/2015	11/11/2015	11/12/2015	11/11/2015	1 OF 2