

ISO/ABMA BASIC LOAD RATINGS		
Rating	Newtons	Lbs
DYNAMIC	23,240	5,225
STATIC	38,540	8,664

TRACK ROLLER LOAD RATINGS		
RATING	Newtons	Lbs
DYNAMIC	19,420	4,366
STATIC	32,200	7,239

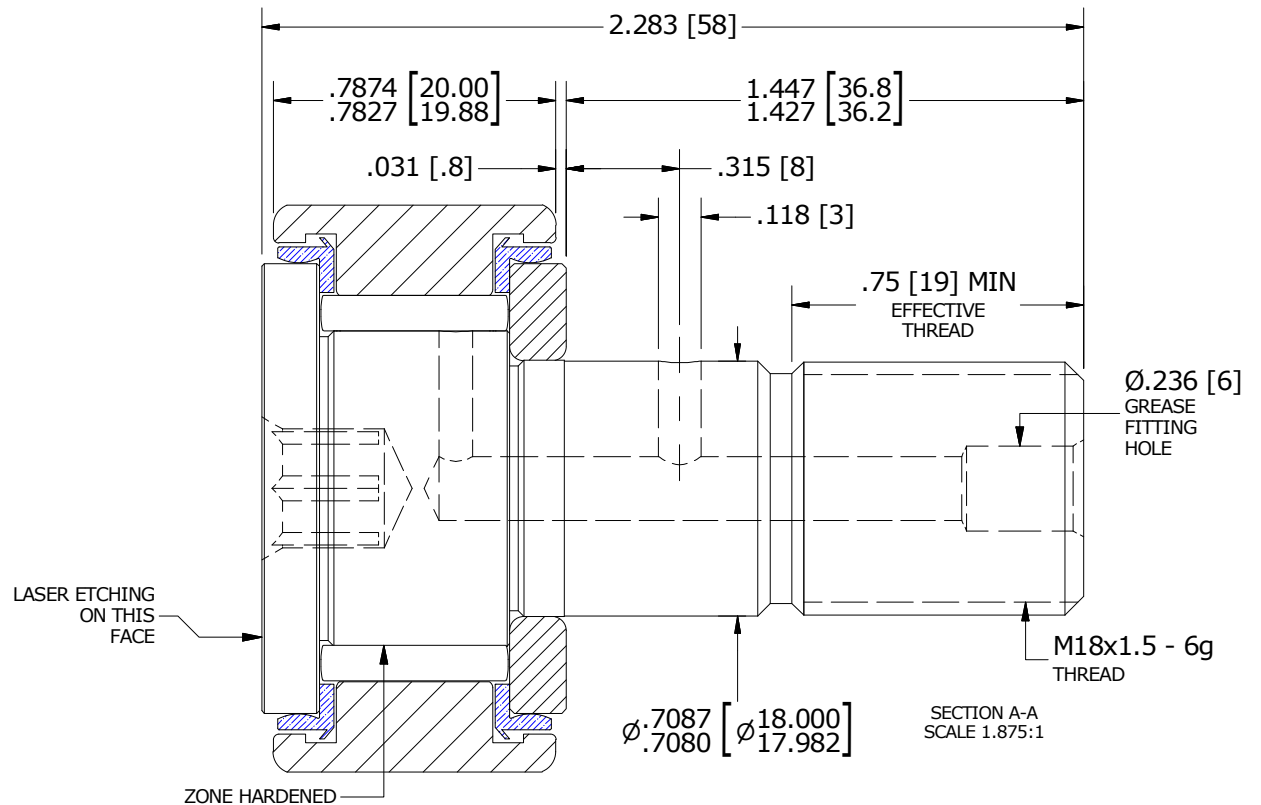
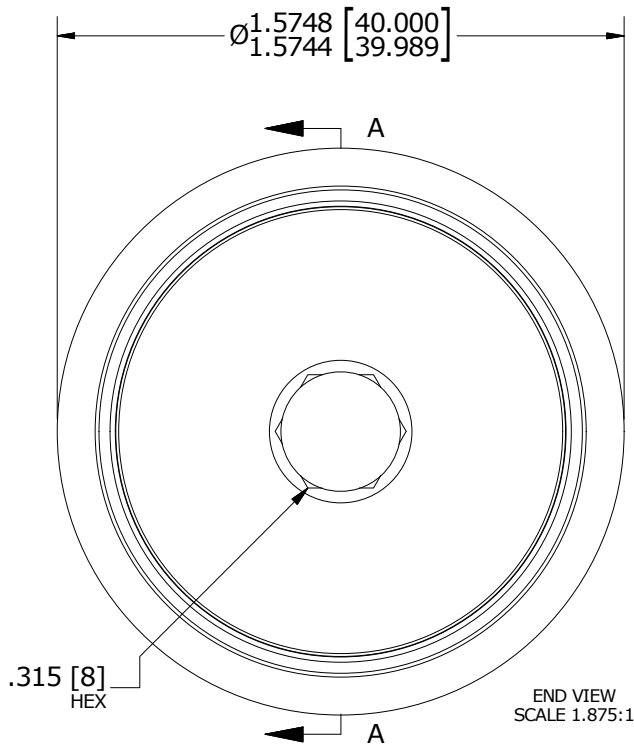
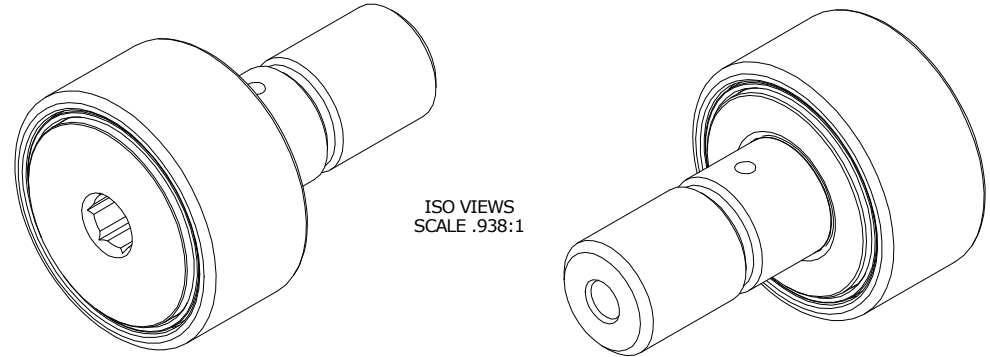
MAXIMUM CLAMPING TORQUE		
Thread Type	Nm	Inch Lbs
DRY	85	752
LUBRICATED	42.5	376

RECOMMENDED MOUNTING HOLE Ø		
Limit	mm	Inch
MIN	18.000	.7087
MAX	18.018	.7094

NOTES:

- BEARING IS PACKED WITH NLGI GRADE 2, LITHIUM BASED GREASE (UNLESS OTHERWISE SPECIFIED).
- ALL EXPOSED STEEL SURFACES HAVE BLACK OXIDE.
- CUSTOM LASER ETCHING UPON REQUEST.
- LIMITING SPEEDS:
 - GREASE = 3,300 RPM.
 - OIL = 4,300 RPM.

MS NO. _____ NSN NO. _____ DRAWING NO. MCNB-40-SBX



MATERIAL NOTES:

OUTER RING - BEARING STEEL, HEAT TREATED
 STUD - BEARING STEEL, ZONE HARDENED
 NEEDLE ROLLER - BEARING STEEL, HEAT TREATED
 WASHER - BEARING STEEL, HEAT TREATED
 SEAL - SYNTHETIC

CUSTOMER PART#	XX = ± .01 XXX = ± .005 XXXX = ± .0005 ANGLES = ± 1' INCH [METRIC] FRACTION = ± 1/32
ENGINEERING CHANGE ORDER NOTE	

CARTER MANUFACTURING IS NOT RESPONSIBLE FOR TYPOGRAPHICAL ERRORS	
REVISION	
A	AUTHOR BY HG
REVISION BY SGW	DATE 2/9/2015

CARTER MANUFACTURING CO., INC. GRAND HAVEN, MICHIGAN 49417			
PART NAME: ASSEMBLY			PRODUCT TYPE: MCNB
DRAWN BY SGW	CHK'D BY MD	SALES KR	MATERIAL NOTED
DATE 11/26/2014	DATE 1/26/2015	DATE 8/13/2015	SHEET 1 OF 2