

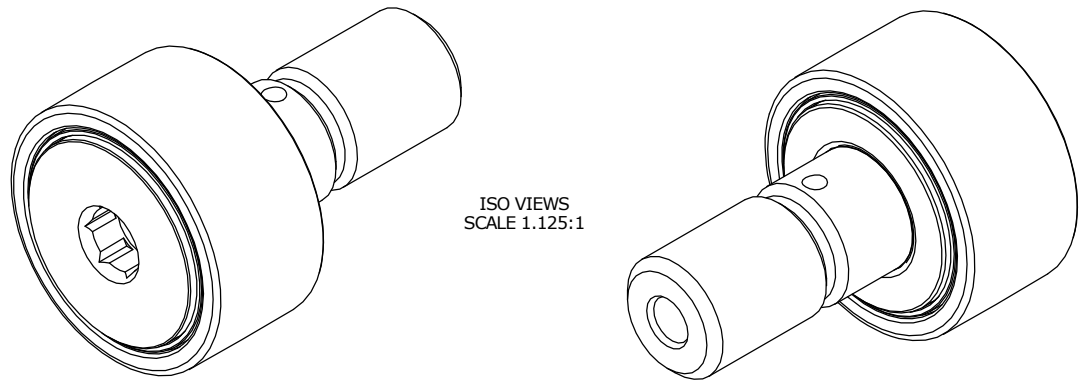
ISO/ABMA BASIC LOAD RATINGS		
Rating	Newtons	Lbs
DYNAMIC	20,300	4,564
STATIC	34,130	7,673

TRACK ROLLER LOAD RATINGS		
RATING	Newtons	Lbs
DYNAMIC	16,970	3,815
STATIC	28,500	6,407

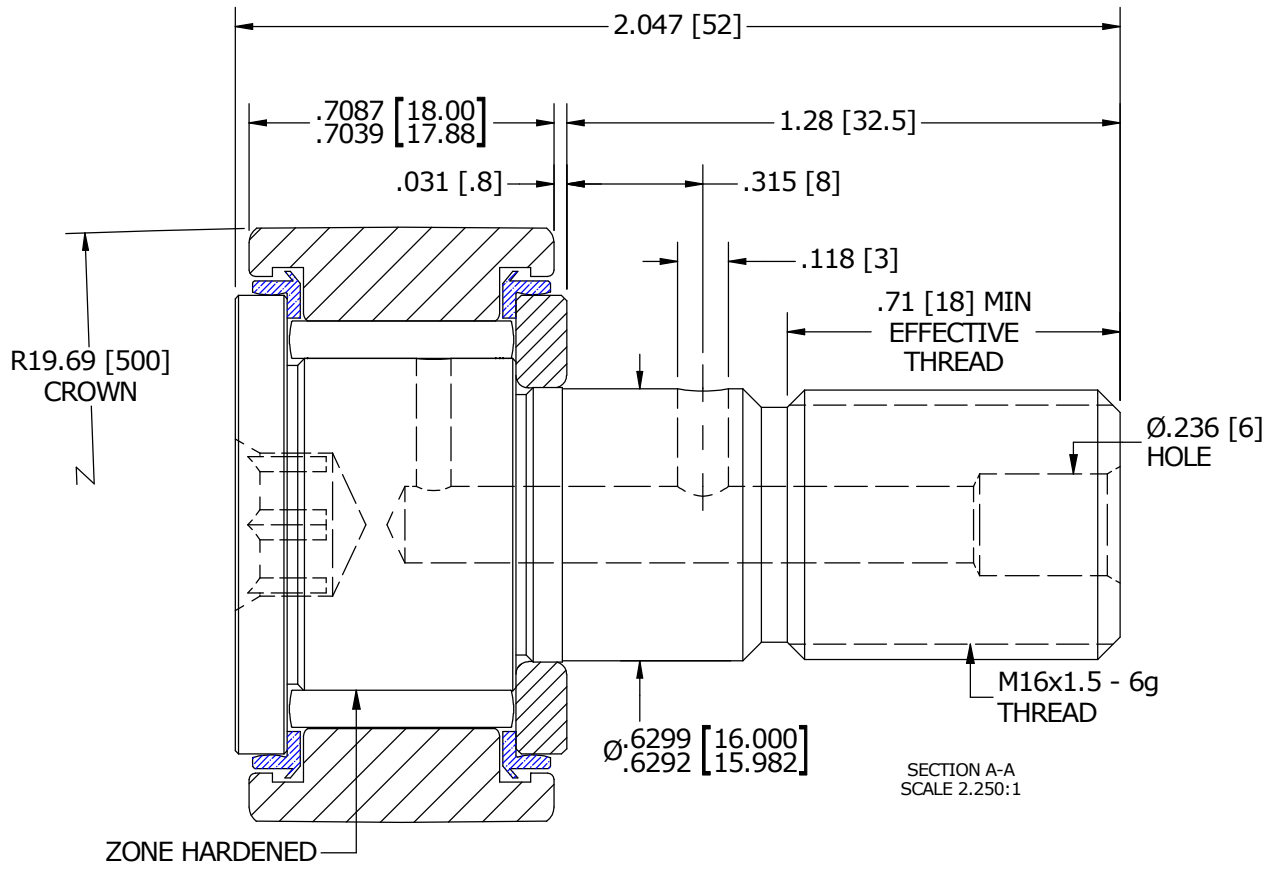
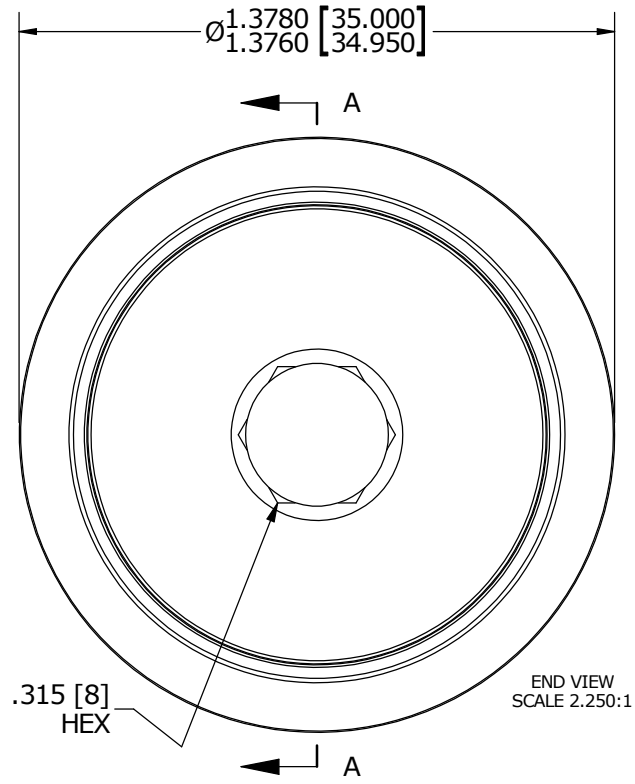
MAXIMUM CLAMPING TORQUE		
Thread Type	Nm	Inch Lbs
DRY	57	504
LUBRICATED	28.5	252

RECOMMENDED MOUNTING HOLE Ø		
Limit	mm	Inch
MIN	16.000	.6299
MAX	16.018	.6306

MS NO. \_\_\_\_\_ NSN NO. \_\_\_\_\_ DRAWING NO. MCNB-35-SB



- NOTES:
- BEARING IS PACKED WITH NLGI GRADE 2, LITHIUM BASED GREASE (UNLESS OTHERWISE SPECIFIED)
  - ALL EXPOSED STEEL SURFACES HAVE BLACK OXIDE
  - LIMITING SPEEDS:
    - GREASE = 4,200 RPM
    - OIL = 5,500 RPM



MATERIAL NOTES:

OUTER RACE - BEARING STEEL, HEAT TREATED  
 STUD - BEARING STEEL, ZONE HARDENED  
 NEEDLE ROLLER - BEARING STEEL, HEAT TREATED  
 WASHER - COLD ROLLED STEEL, HEAT TREATED  
 SEAL - SYNTHETIC

CUSTOMER PART# \_\_\_\_\_

XX = ± .01  
 XXX = ± .005  
 XXXX = ± .0005  
 ANGLES = ± 1'  
 INCH [METRIC]  
 FRACTION = ± 1/32

ENGINEERING CHANGE ORDER NOTE

CARTER MANUFACTURING IS NOT RESPONSIBLE FOR TYPOGRAPHICAL ERRORS

**CARTER MANUFACTURING CO., INC.**  
 GRAND HAVEN, MICHIGAN 49417

REVISION		PART NAME: ASSEMBLY			
REVISION BY	DATE	DRAWN BY	CHK'D BY	SALES	MATERIAL
C	HG	SGW	MD	KR	NOTED
REVISION BY	DATE	DATE	DATE	DATE	SHEET
SGW	2/10/2015	10/29/2014	1/27/2015	8/13/2015	1 OF 2