

ISO/ABMA BASIC LOAD RATINGS		
Rating	Newtons	Lbs
DYNAMIC	13,240	2,976
STATIC	18,140	4,078

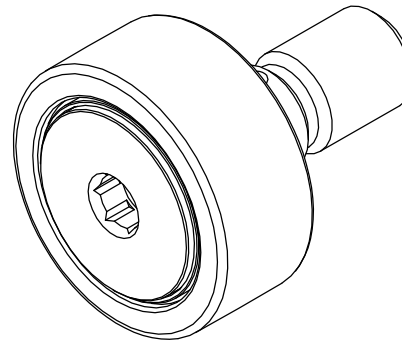
TRACK ROLLER LOAD RATINGS		
RATING	Newtons	Lbs
DYNAMIC	11,080	2,491
STATIC	15,300	3,440

MAXIMUM CLAMPING TORQUE		
Thread Type	Nm	Inch Lbs
DRY	22	195
LUBRICATED	11	97.5

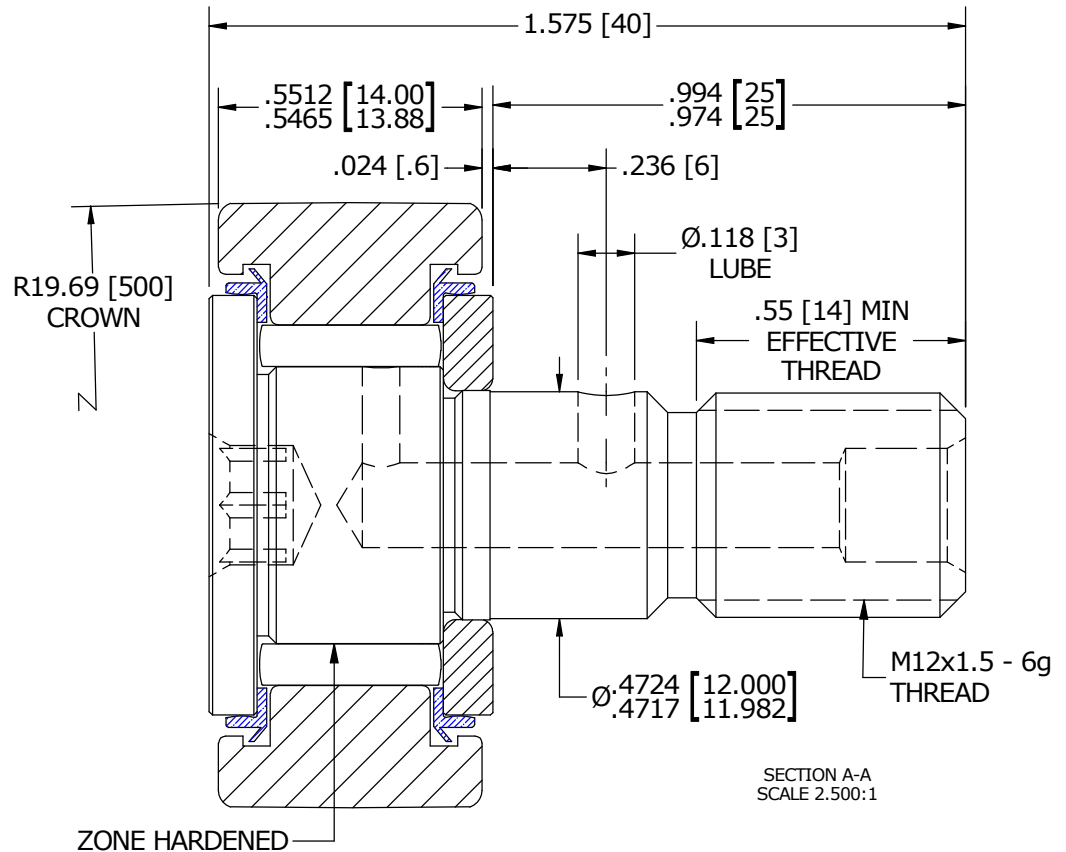
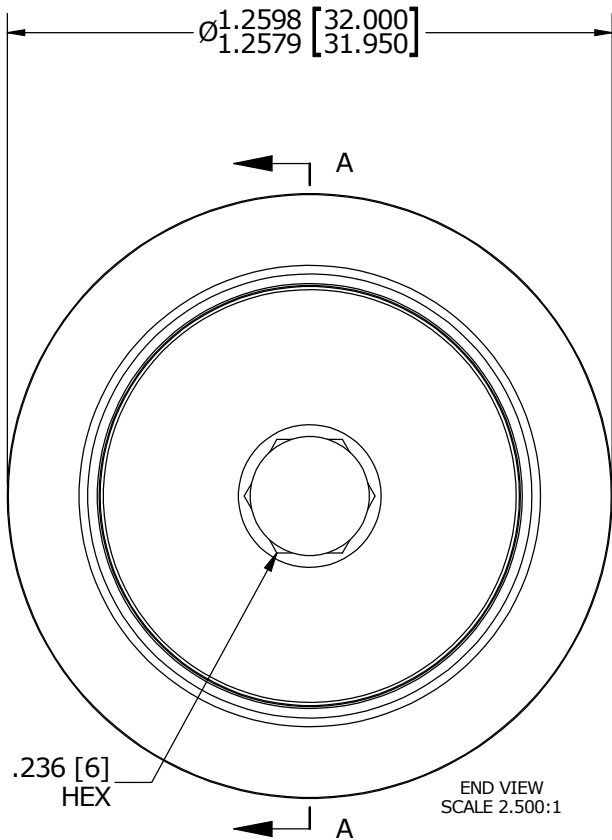
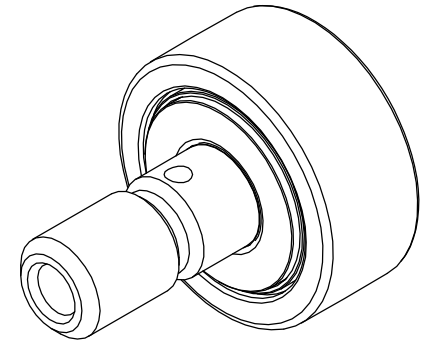
RECOMMENDED MOUNTING HOLE Ø		
Limit	mm	Inch
MIN	12.000	.4724
MAX	12.018	.4731

- NOTES:
1. BEARING IS PACKED WITH NLGI GRADE 2, LITHIUM BASED GREASE (UNLESS OTHERWISE SPECIFIED)
  2. ALL EXPOSED STEEL SURFACES HAVE BLACK OXIDE
  3. LIMITING SPEEDS:
    - A. GREASE = 6,400 RPM
    - B. OIL = 8,300 RPM

MS NO. \_\_\_\_\_ NSN NO. \_\_\_\_\_ DRAWING NO. MCNB-32-SB



ISO VIEWS  
SCALE 1.250:1



MATERIAL NOTES:

OUTER RACE - BEARING STEEL, HEAT TREATED  
 STUD - BEARING STEEL, ZONE HARDENED  
 NEEDLE ROLLER - BEARING STEEL, HEAT TREATED  
 WASHER - COLD ROLLED STEEL, HEAT TREATED  
 SEAL - SYNTHETIC

CUSTOMER PART#

XX = ± .01  
 XXX = ± .005  
 XXXX = ± .0005  
 ANGLES = ± 1'  
 INCH [METRIC]  
 FRACTION = ± 1/32

CARTER MANUFACTURING IS NOT RESPONSIBLE FOR TYPOGRAPHICAL ERRORS

**CARTER MANUFACTURING CO., INC.**  
 GRAND HAVEN, MICHIGAN 49417

ENGINEERING CHANGE ORDER NOTE

REVISION

PART NAME: ASSEMBLY

REVISION	AUTHOR BY	DRAWN BY	CHK'D BY	SALES	MATERIAL
D	HG	RAM	MD	KR	NOTED
REVISION BY	DATE	DATE	DATE	DATE	SHEET
SGW	11/7/2014	4/12/2000	10/27/2014	10/24/2014	1 OF 2