

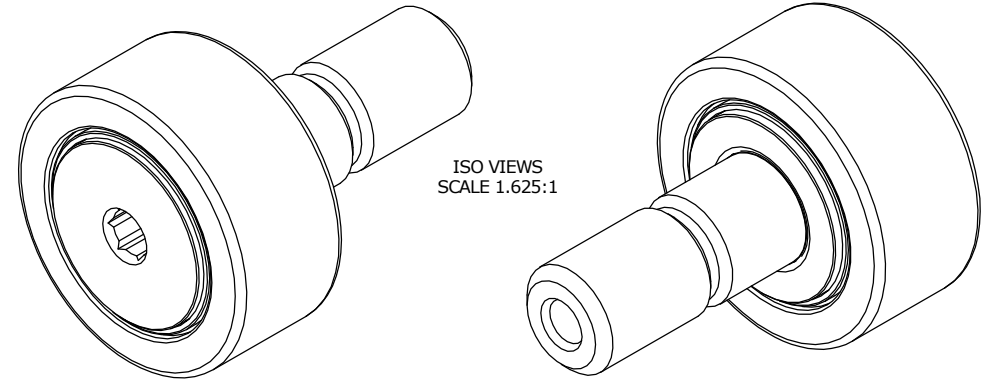
ISO/ABMA BASIC LOAD RATINGS		
Rating	Newtons	Lbs
DYNAMIC	9,410	2,115
STATIC	12,360	2,779

TRACK ROLLER LOAD RATINGS		
RATING	Newtons	Lbs
DYNAMIC	7,850	1,765
STATIC	10,400	2,338

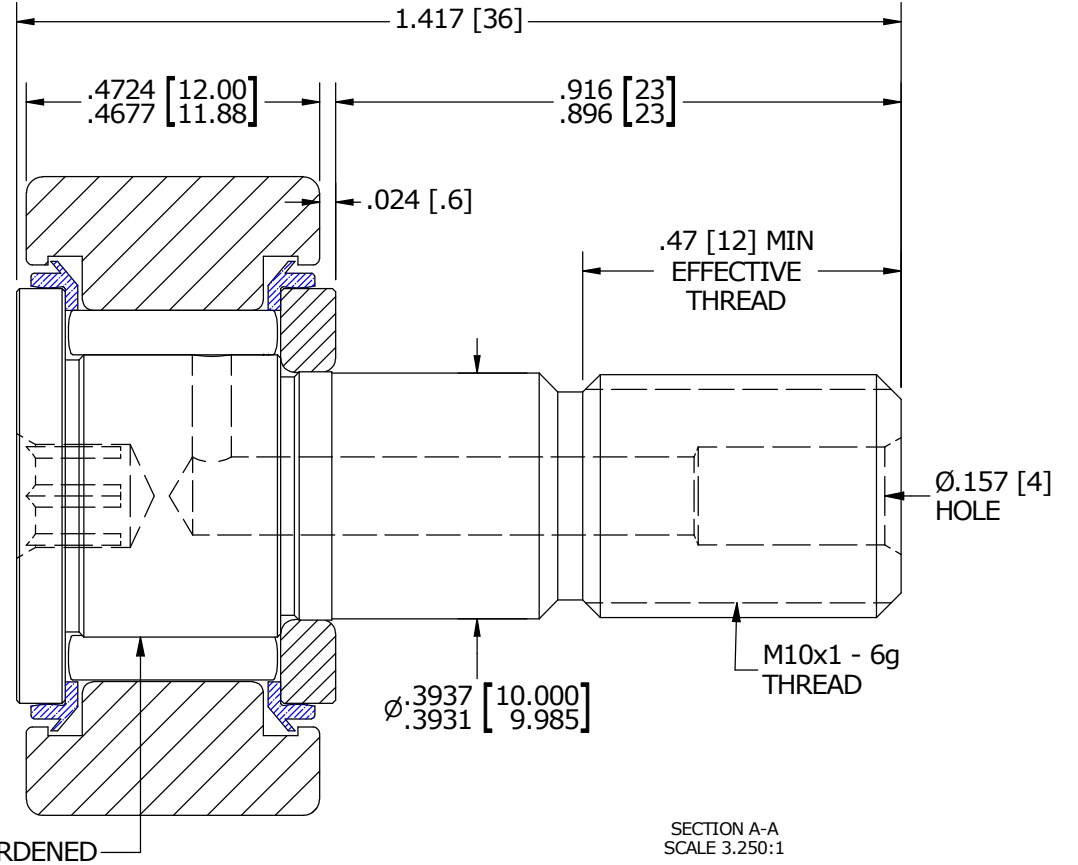
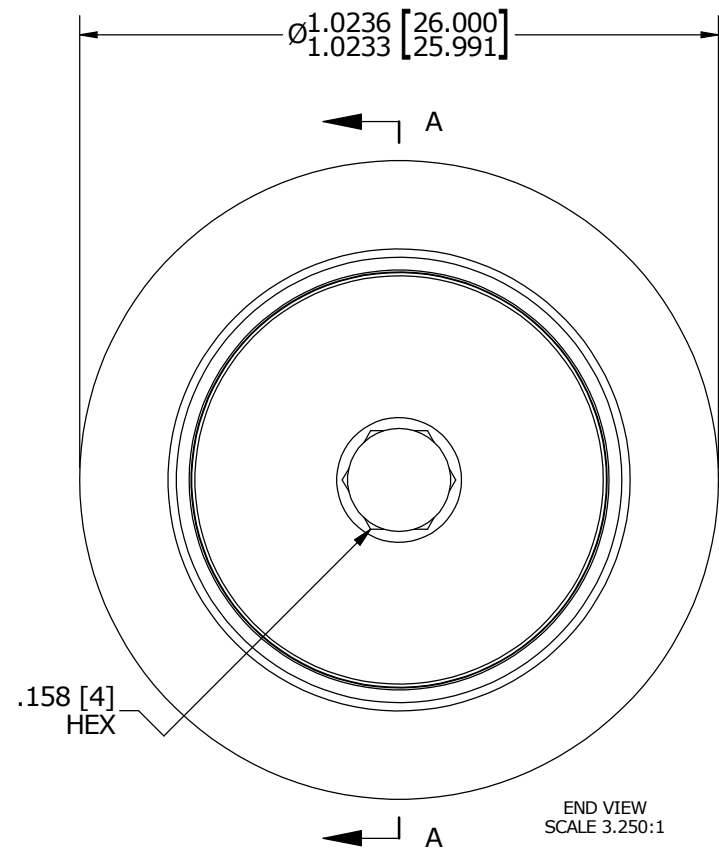
MAXIMUM CLAMPING TORQUE		
Thread Type	Nm	Inch Lbs
DRY	15	132.76
LUBRICATED	7.5	66.40

RECOMMENDED MOUNTING HOLE Ø		
Limit	mm	Inch
MIN	10.000	.3937
MAX	10.015	.3943

MS NO. _____ NSN NO. _____ DRAWING NO. MCNB-26-SBX



- NOTES:
1. BEARING IS PACKED WITH NLGI GRADE 2, LITHIUM BASED GREASE (UNLESS OTHERWISE SPECIFIED)
 2. ALL EXPOSED STEEL SURFACES HAVE BLACK OXIDE
 3. LIMITING SPEEDS:
 - A. GREASE = 9,000 RPM
 - B. OIL = 11,500 RPM



MATERIAL NOTES:

OUTER RACE - BEARING STEEL, HEAT TREATED
 STUD - BEARING STEEL, ZONE HARDENED
 NEEDLE ROLLER - BEARING STEEL, HEAT TREATED
 WASHER - COLD ROLLED STEEL, HEAT TREATED
 SEAL - SYNTHETIC

CUSTOMER PART#	XX = ± .01 XXX = ± .005 XXXX = ± .0005 ANGLES = ± 1' INCH [METRIC] FRACTION = ± 1/32
<i>ENGINEERING CHANGE ORDER NOTE</i>	

CARTER MANUFACTURING IS NOT RESPONSIBLE FOR TYPOGRAPHICAL ERRORS				CARTER MANUFACTURING CO., INC. GRAND HAVEN, MICHIGAN 49417			
<i>REVISION</i>				PART NAME: ASSEMBLY			
D	AUTHOR BY MD	DRAWN BY AJH	CHK'D BY HG	SALES KR	MATERIAL NOTED		
REVISION BY SGW	DATE 4/29/2015	DATE 8/15/2001	DATE 4/29/2015	DATE 10/9/2014	SHEET 1 OF 2		