

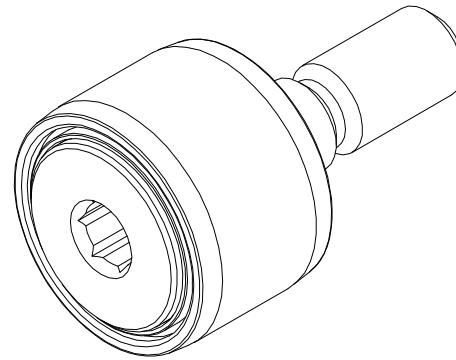
ISO/ABMA BASIC LOAD RATINGS		
Rating	Newtons	Lbs
DYNAMIC	6,960	1,565
STATIC	8,340	1,875

TRACK ROLLER LOAD RATINGS		
RATING	Newtons	Lbs
DYNAMIC	5,790	1,302
STATIC	2,350	528

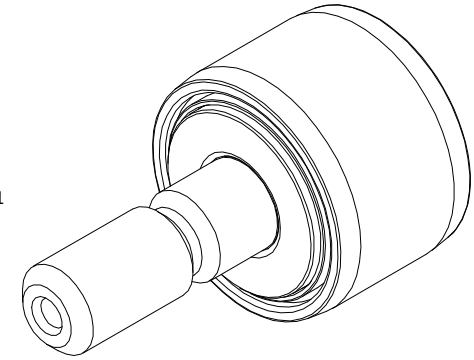
MAXIMUM CLAMPING TORQUE		
Thread Type	Nm	Inch Lbs
DRY	3	26.50
LUBRICATED	1.5	13.25

RECOMMENDED MOUNTING HOLE Ø		
Limit	mm	Inch
MIN	6.000	.2362
MAX	6.012	.2367

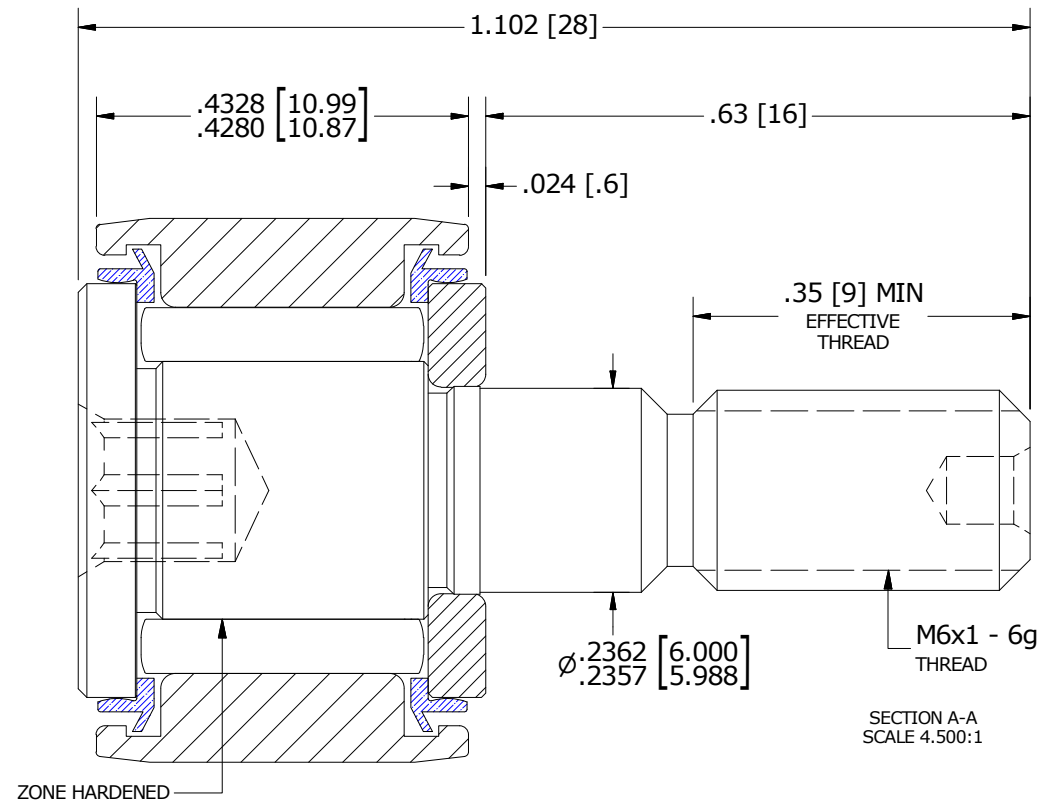
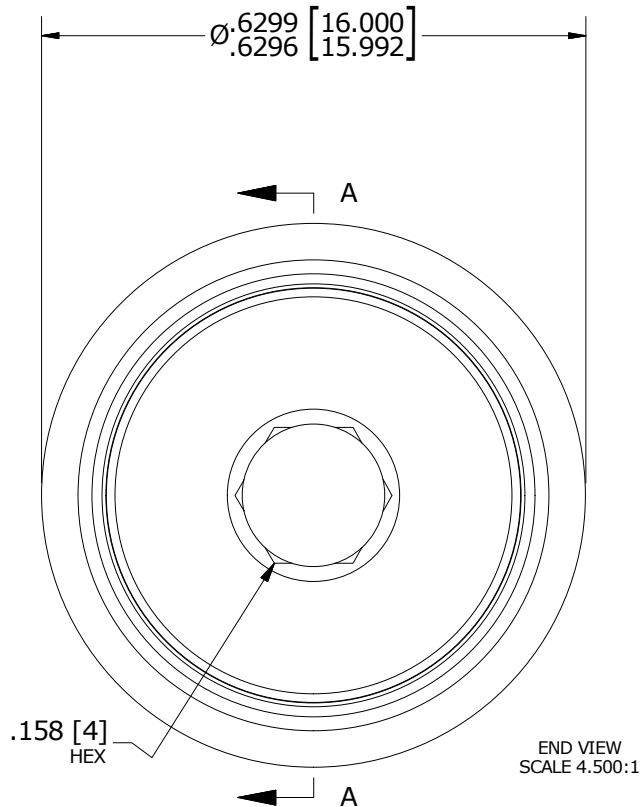
MS NO. \_\_\_\_\_ NSN NO. \_\_\_\_\_ DRAWING NO. MCNB-16-SBX



ISO VIEWS  
SCALE 2.250:1



- NOTES:
- BEARING IS PACKED WITH NLGI GRADE 2, LITHIUM BASED GREASE (UNLESS OTHERWISE SPECIFIED)
  - ALL EXPOSED STEEL SURFACES HAVE BLACK OXIDE
  - LIMITING SPEEDS:
    - GREASE = 13,000 RPM
    - OIL = 17,000 RPM



MATERIAL NOTES:

- OUTER RING - BEARING STEEL, HEAT TREATED
- STUD - BEARING STEEL, ZONE HARDENED
- NEEDLE ROLLER(S) - BEARING STEEL, HEAT TREATED
- WASHER - COLD ROLLED STEEL, HEAT TREATED
- SEAL(S) - SYNTHETIC

CUSTOMER PART#	XX = ± .01 XXX = ± .005 XXXX = ± .0005 ANGLES = ± 1' INCH [METRIC] FRACTION = ± 1/32
ENGINEERING CHANGE ORDER NOTE	

CARTER MANUFACTURING IS NOT RESPONSIBLE FOR TYPOGRAPHICAL ERRORS

**CARTER MANUFACTURING CO., INC.**  
GRAND HAVEN, MICHIGAN 49417

REVISION		PART NAME: ASSEMBLY			PRODUCT TYPE: CNB	
<b>C</b>	AUTHOR BY HG	DRAWN BY SGW	CHK'D BY MD	SALES KR	MATERIAL NOTED	
REVISION BY SGW	DATE 9/26/2014	DATE 10/1/2012	DATE 9/22/2014	DATE 9/22/2014	SHEET 1 OF 2	