

ISO/ABMA BASIC LOAD RATINGS		
Rating	Newtons	Lbs
DYNAMIC	6,960	1,565
STATIC	8,340	1,875

TRACK ROLLER LOAD RATINGS		
RATING	Newtons	Lbs
DYNAMIC	5,790	1,302
STATIC	2,350	528

MAXIMUM CLAMPING TORQUE		
Thread Type	Nm	Inch Lbs
DRY	3	26.50
LUBRICATED	1.5	13.25

RECOMMENDED MOUNTING HOLE Ø		
Limit	mm	Inch
MIN	6.000	.2362
MAX	6.012	.2367

NOTES:

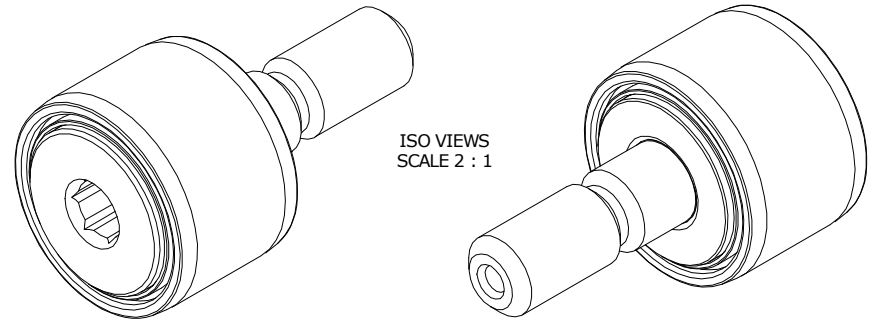
- BEARING IS PACKED WITH NLGI GRADE 2, LITHIUM BASED GREASE (UNLESS OTHERWISE SPECIFIED)
- ALL EXPOSED SURFACES HAVE BLACK OXIDE
- CUSTOM LASER ETCHING IS AVAILABLE UPON REQUEST
- LIMITING SPEEDS:
 - GREASE = 13,000 RPM
 - OIL = 17,000 RPM

SIGNED DRAWING APPROVAL REQUIRED

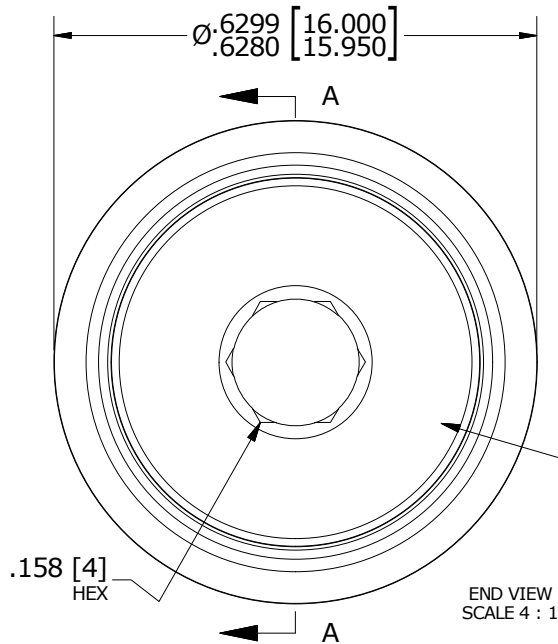
PLEASE REVIEW AND VERIFY INFORMATION ON ALL SHEETS & RETURN COPY WITH SIGNED AND DATED APPROVAL, AND/OR REQUIRED CHANGES. CARTER WILL NOT PROCEED WITH ORDER UNTIL APPROVAL IS RECEIVED

SIGNED _____ DATE _____ APPROVED REJECTED

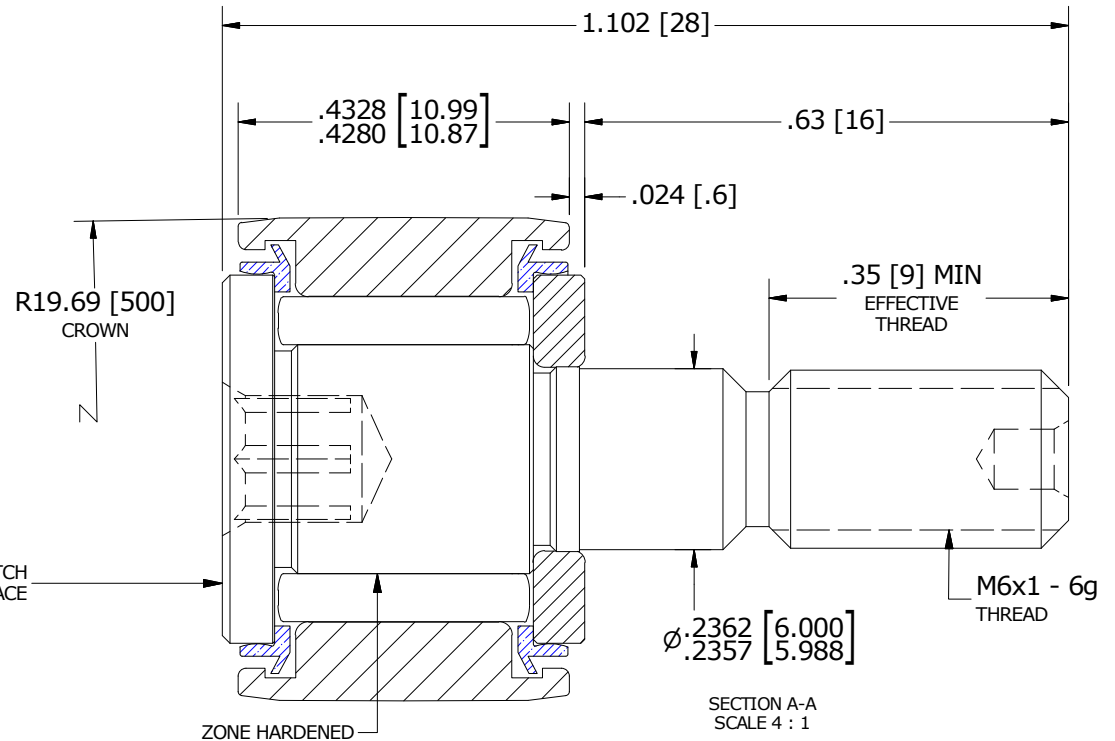
MS NO. _____ NSN NO. _____ DRAWING NO. _____ MCNB-16-SB



ISO VIEWS
SCALE 2 : 1



END VIEW
SCALE 4 : 1



SECTION A-A
SCALE 4 : 1

ASSEMBLY NOTES:

- OUTER RING - BEARING STEEL, HEAT TREATED
- STUD - BEARING STEEL, ZONE HARDENED
- NEEDLE ROLLER(S) - BEARING STEEL, HEAT TREATED
- WASHER - COLD ROLLED STEEL, HEAT TREATED
- SEAL(S) - SYNTHETIC

CUSTOMER PART#	XX = ± .01 XXX = ± .005 XXXX = ± .0005 ANGLES = ± 1' INCH [METRIC] FRACTION = ± 1/32
ENGINEERING CHANGE ORDER NOTE	
ECO #8190	

CARTER MANUFACTURING IS NOT RESPONSIBLE FOR TYPOGRAPHICAL ERRORS

REVISION	
C	AUTHOR BY HG
REVISION BY SGW	DATE 9/25/2014

CARTER MANUFACTURING CO., INC.
GRAND HAVEN, MICHIGAN 49417

PART NAME: ASSEMBLY			PRODUCT TYPE: CNB		
DRAWN BY JGV	CHK'D BY MD	SALES KR	MATERIAL NOTED		
DATE 9/11/2006	DATE 9/21/2014	DATE 9/21/2014	SHEET 1 OF 2		