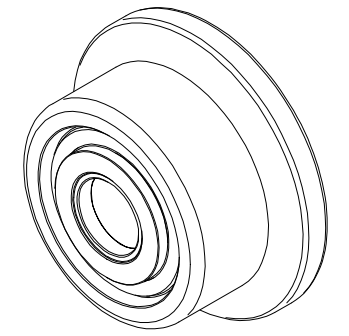
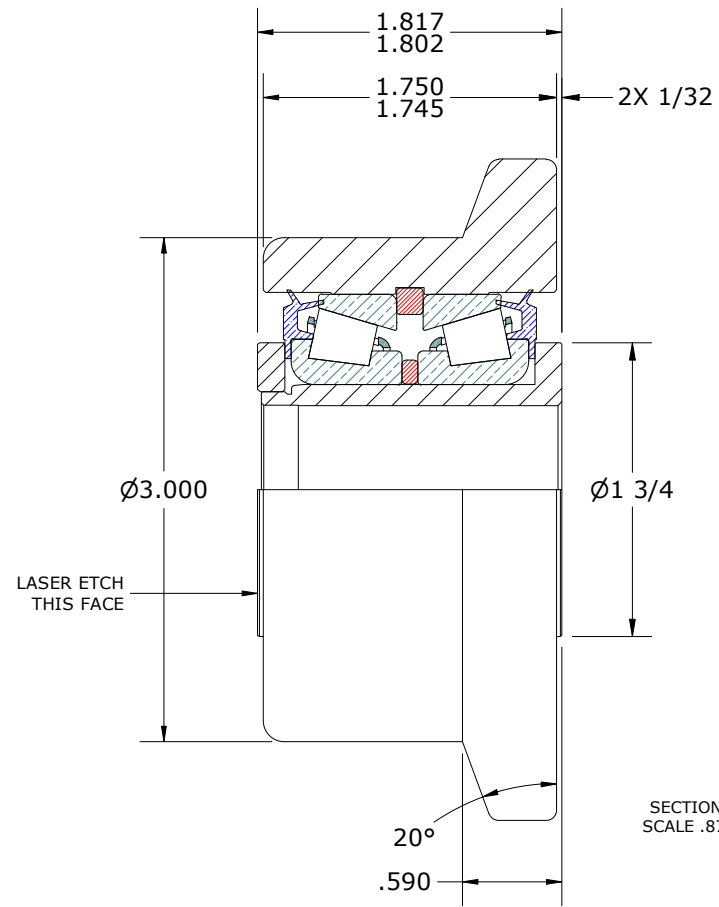
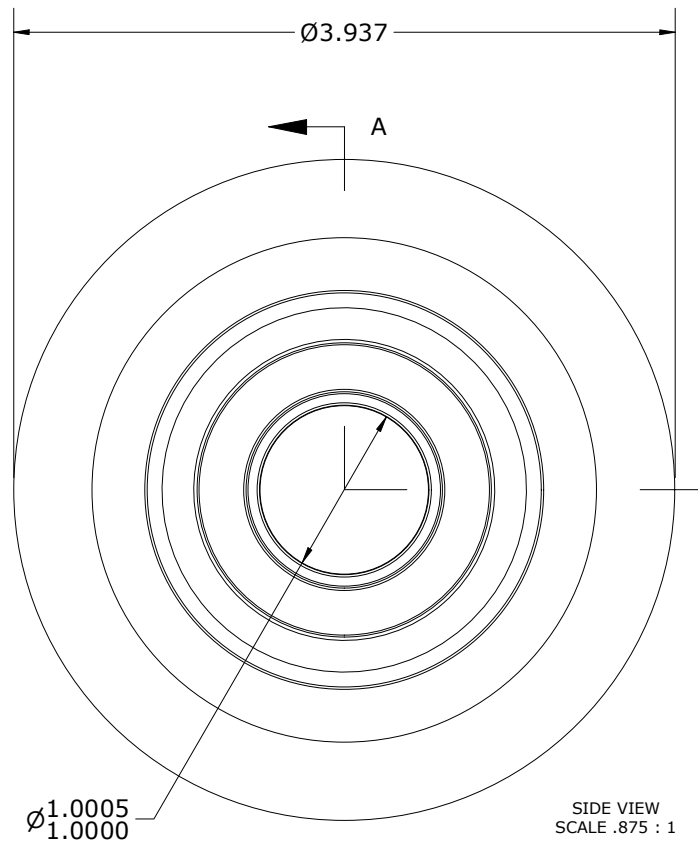
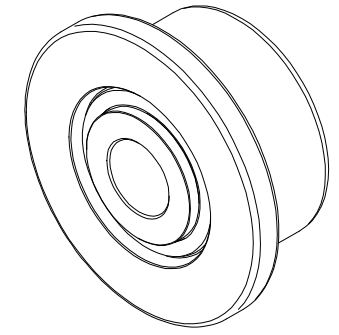


LOAD RATINGS		
RATING	lbf	Newtons
RADIAL BASIC DYNAMIC	14,270	63,476
STATIC THRUST LOAD	12,000	53,379
MAXIMUM STATIC CAPACITY	20,000	88,964

- NOTES:
1. BEARING IS PACKED WITH NLGI GRADE 2, LITHIUM BASED GREASE (UNLESS OTHERWISE SPECIFIED)
 2. ALL EXPOSED SURFACES HAVE BLACK OXIDE
 3. CUSTOM LASER ETCHING IS AVAILABLE UPON REQUEST



ISO VIEWS
SCALE .438 : 1



MATERIAL NOTES:

OUTER RING - BEARING STEEL, HEAT TREATED

YOKE - STEEL

TAPERED SET - TIMKEN P/N: LM67000LA-902A2 OR ITS EQUIVALENT

WASHER - STEEL

CUSTOMER PART#	XX = ± .01 XXX = ± .005 XXXX = ± .0005 ANGLES = ± 2' INCH [METRIC] FRACTION = ± 1/64
<i>ENGINEERING CHANGE ORDER NOTE</i>	
CARTER STANDARD SURFACE FINISH IS MEASURED IN "Ra" UNITS UNLESS OTHERWISE SPECIFIED.	

CARTER MANUFACTURING IS NOT RESPONSIBLE FOR TYPOGRAPHICAL ERRORS

REVISION	
D	AUTHOR BY HG
REVISION BY DJB	DATE 11/8/2023

CARTER MANUFACTURING CO., INC.
GRAND HAVEN, MICHIGAN 49417

PART NAME: Assembly				PRODUCT TYPE: Standard CF/YR	
DRAWN BY GJP	CHK'D BY MD	SALES NC	MATERIAL NOTED	DATE 11/8/2023	SHEET 1 OF 2