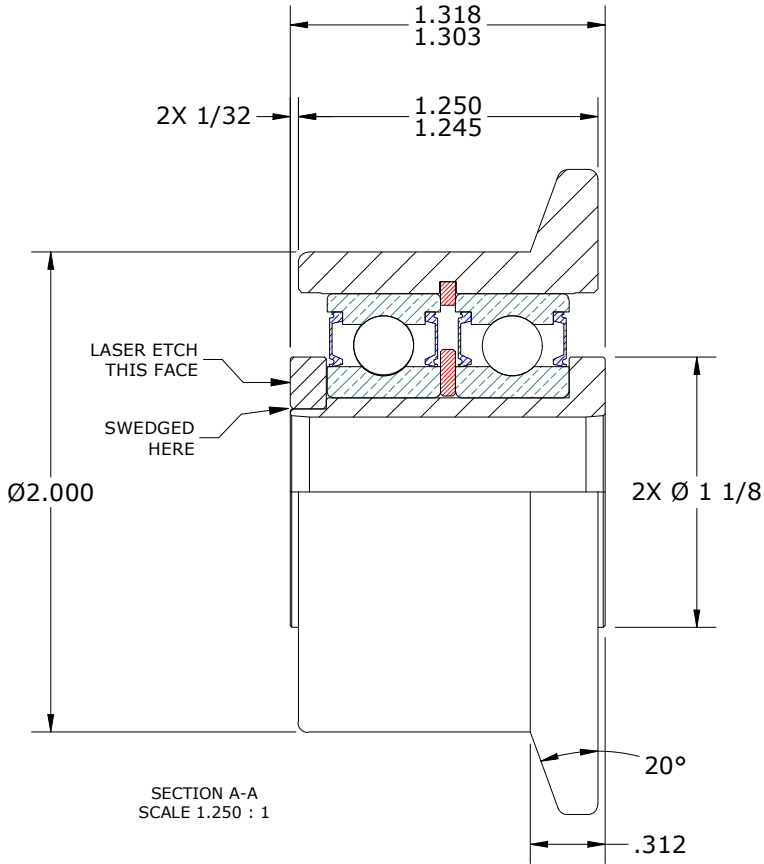
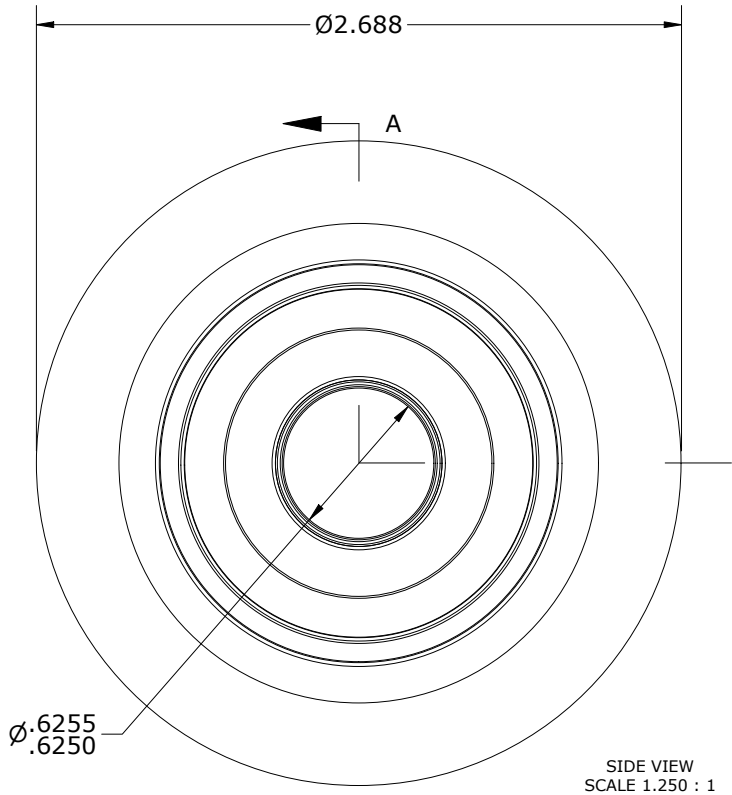
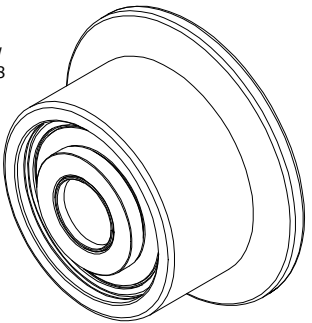


LOAD RATINGS		
RATING	lbf	Newtons
RADIAL BASIC DYNAMIC [C]	3,400	15,124
STATIC THRUST LOAD	1,120	4,982
MAXIMUM STATIC CAPACITY [Co]	1,810	8,051

- NOTES:
1. BALL BEARINGS COME PRE-PACKED WITH GREASE.
 2. ALL EXPOSED SURFACES HAVE BLACK OXIDE.
 3. CUSTOM LASER ETCHING IS AVAILABLE UPON REQUEST.

MS NO.	NSN NO.	DRAWING NO.	FHRY-200-A
--------	---------	-------------	------------

ISO VIEW
SCALE 5/8



MATERIAL NOTES: OUTER ROLLER HOUSING - BEARING STEEL, HEAT TREATED STUD - STEEL SPACER - STEEL WASHER - STEEL SNAP RING - SPRING STEEL BALL BEARING ASSEMBLY(S) - 6004.2RS ([2] REQ'D)	CUSTOMER PART#	XX = ± .01 XXX = ± .005 XXXX = ± .0005 ANGLES = ± 1' INCH [METRIC] FRACTION = ± 1/32	CARTER MANUFACTURING IS NOT RESPONSIBLE FOR TYPOGRAPHICAL ERRORS		CARTER MANUFACTURING CO., INC. GRAND HAVEN, MICHIGAN 49417				
			REVISION		PART NAME: ASSEMBLY			PRODUCT TYPE: FHRY	
	ENGINEERING CHANGE ORDER NOTE		A	AUTHOR BY HG	DRAWN BY SGW	CHK'D BY MD	SALES NC	MATERIAL NOTED	
				REVISION BY SGW	DATE 11/11/2020	DATE 11/6/2020	DATE 11/9/2020	DATE 11/6/2020	SHEET 1 OF 2