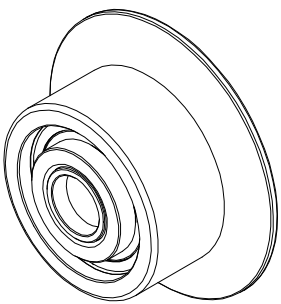


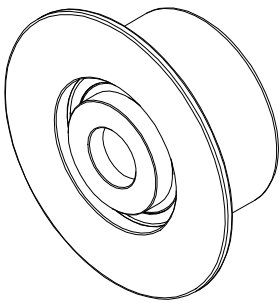
LOAD RATINGS		
RATING	lbf	Newtons
DYNAMIC RADIAL LOAD (500 Hrs. L10 @ 33 1/3 RPM)	1,850	8,229
STATIC THRUST LOAD	480	2,135
STATIC RADIAL LOAD	780	3,470

MS NO.	NSN NO.	DRAWING NO.	FHRY-150-A
--------	---------	-------------	------------

- NOTES:
1. BALL BEARINGS COME PRE-PACKED WITH GREASE
 2. ALL EXPOSED SURFACES HAVE BLACK OXIDE
 3. CUSTOM LASER ETCHING UPON REQUEST



ISO VIEWS
SCALE .750 : 1



SIGNED DRAWING APPROVAL REQUIRED

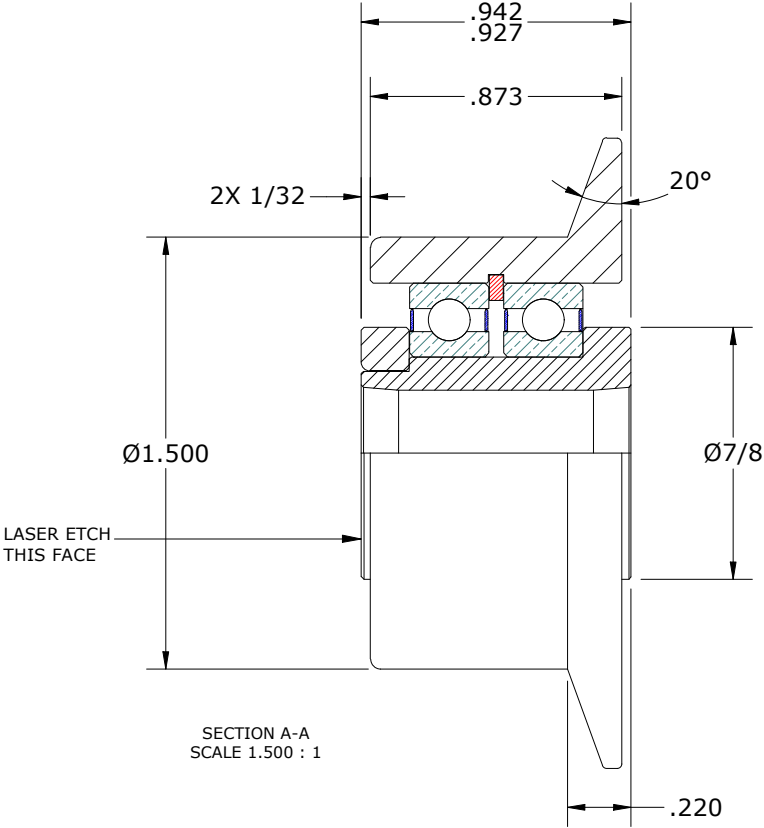
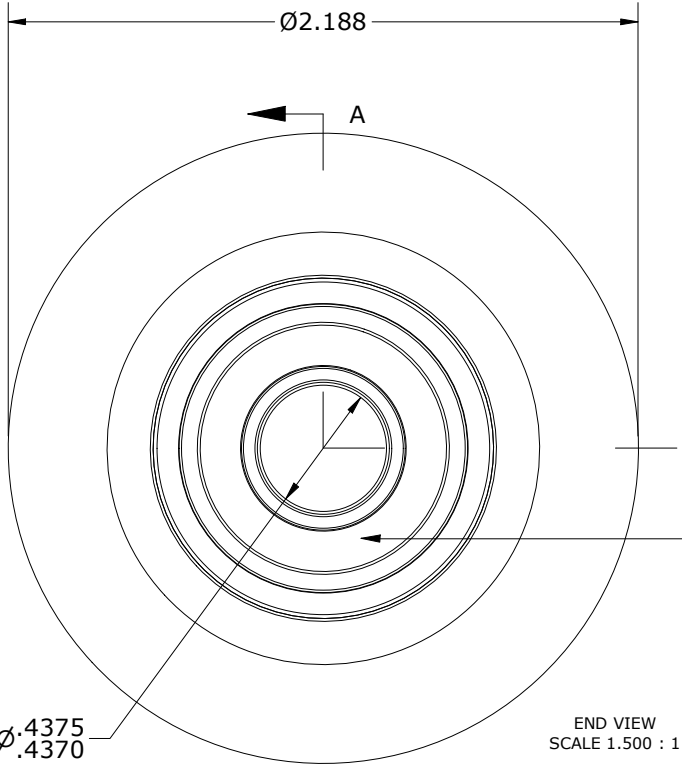
PLEASE REVIEW AND VERIFY INFORMATION ON ALL SHEETS & RETURN COPY WITH SIGNED AND DATED APPROVAL, AND/OR REQUIRED CHANGES. CARTER WILL NOT PROCEED WITH ORDER UNTIL APPROVAL IS RECEIVED

SIGNED

DATE

APPROVED ☐

REJECTED ☐



MATERIAL NOTES: OUTER ROLLER HOUSING - BEARING STEEL, HEAT TREATED STUD - STEEL WASHER - STEEL RETAINING RING - SPRING STEEL BALL BEARING(S) - 6903-2RS, [2] REQ'D	CUSTOMER PART#	XX = ± .01 XXX = ± .005 XXXX = ± .0005 ANGLES = ± 1' INCH [METRIC] FRACTION = ± 1/32	CARTER MANUFACTURING IS NOT RESPONSIBLE FOR TYPOGRAPHICAL ERRORS		CARTER MANUFACTURING CO., INC. GRAND HAVEN, MICHIGAN 49417					
			REVISION		PART NAME: ASSEMBLY			PRODUCT TYPE: FHRY		
	ENGINEERING CHANGE ORDER NOTE		B	AUTHOR BY	DRAWN BY	CHK'D BY	SALES	MATERIAL		
				HG	SGW	MD	NC	NOTED		
				REVISION BY	DATE	DATE	DATE	DATE	SHEET	
			SGW	4/22/2021	3/11/2019	4/21/2021	4/22/2021	1 OF 2		