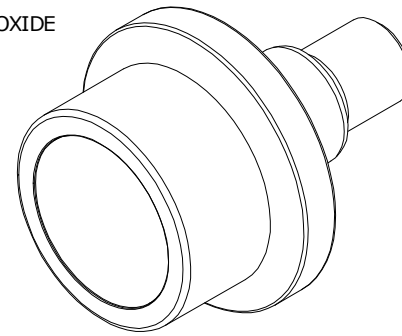


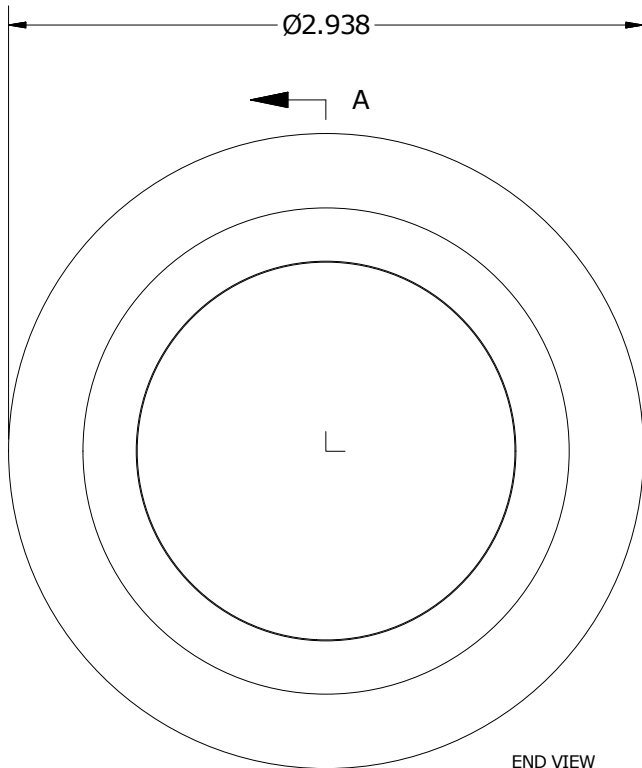
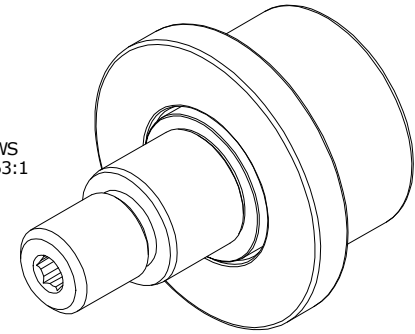
LOAD RATINGS	
RATING	Lbs
RADIAL BASIC DYNAMIC	3,890
DYNAMIC THRUST LOAD	1,800
MAXIMUM STATIC CAPACITY	2,000

MS NO. _____ NSN NO. _____ DRAWING NO. FHRE-225-A

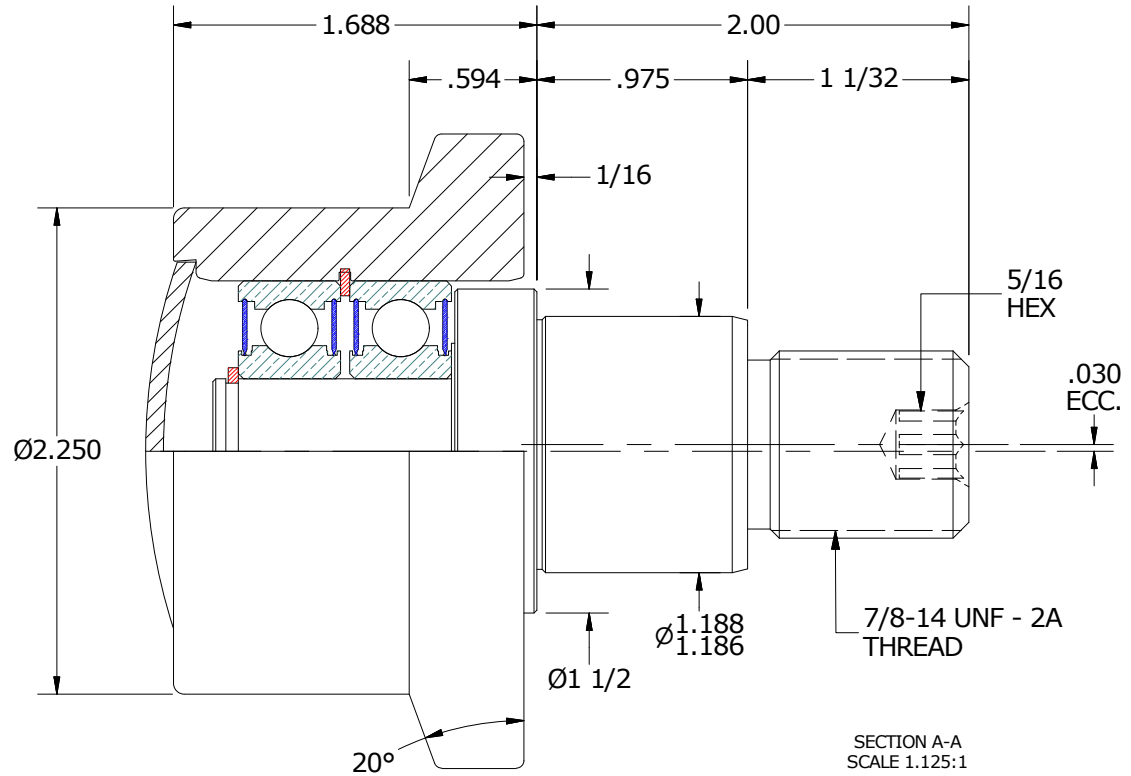
- NOTES:
 1. BALL BEARINGS COME PRE-PACKED WITH GREASE
 2. END CAP AND STUD: ALL EXPOSED SURFACES HAVE BLACK OXIDE



ISO VIEWS
SCALE .563:1



END VIEW
SCALE 1.125:1



SECTION A-A
SCALE 1.125:1

MATERIAL NOTES:

- OUTER ROLLER HOUSING - BEARING STEEL, HEAT TREATED
- STUD - COLD FORMED STEEL
- END CAP - COLD FORMED STEEL
- BALL BEARING - 6203 2RS, [2] REQ'D
- RETAINING RINGS - SPRING STEEL

CUSTOMER PART#

XX = ± .01
 XXX = ± .005
 XXXX = ± .0005
 ANGLES = ± 1'
 INCH [METRIC]
 FRACTION = ± 1/32

CARTER MANUFACTURING IS NOT RESPONSIBLE FOR TYPOGRAPHICAL ERRORS

CARTER MANUFACTURING CO., INC.

GRAND HAVEN, MICHIGAN 49417

REVISION

PART NAME: ASSEMBLY

ENGINEERING CHANGE ORDER NOTE

A

AUTHOR BY
HG

DRAWN BY
SGW

CHK'D BY
MD

SALES
KR

MATERIAL
NOTED

REVISION BY
SGW

DATE
7/20/2017

DATE
7/20/2017

DATE
7/20/2017

DATE
7/20/2017

SHEET
1 OF 2