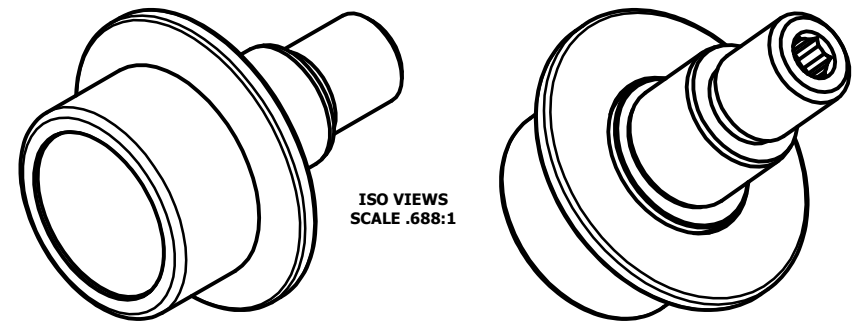
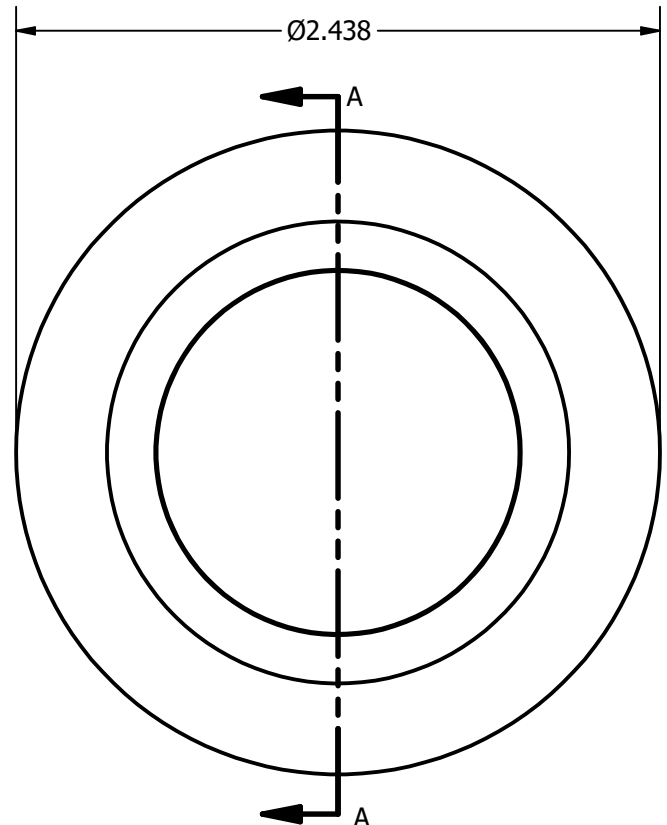


LOAD RATINGS	
RATING	Lbs
RADIAL BASIC DYNAMIC	2,520
DYNAMIC THRUST LOAD	1,320
MAXIMUM STATIC CAPACITY	1,370

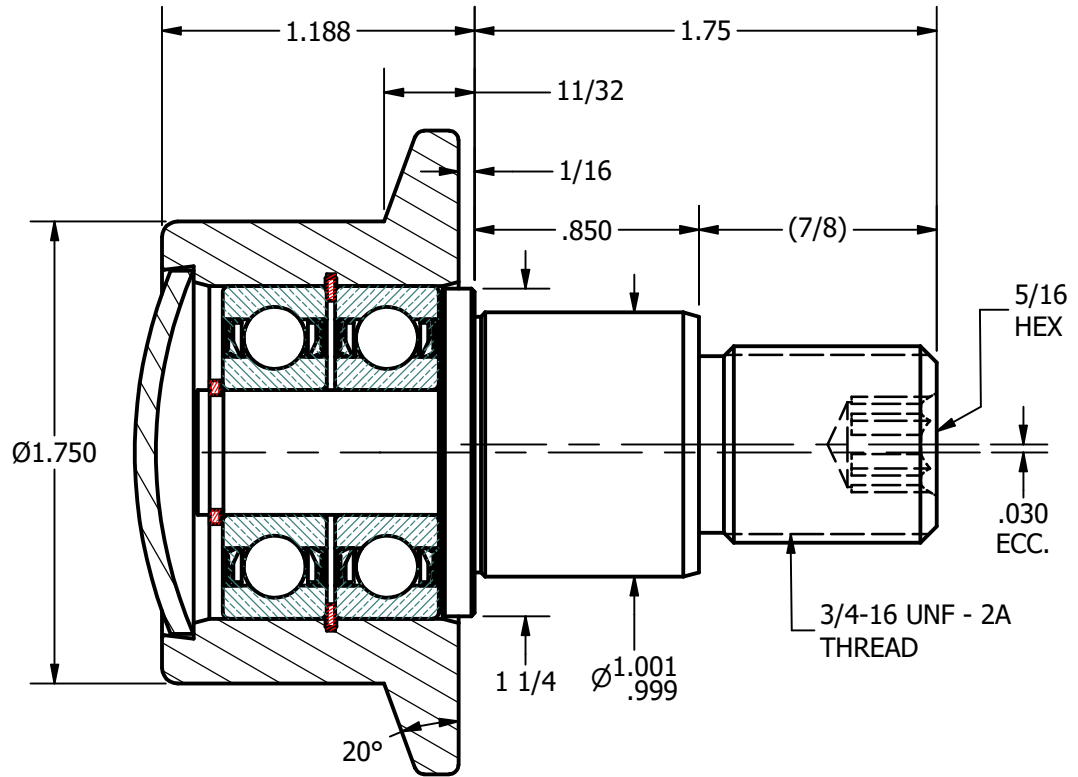
NOTES:  
 1. BALL BEARINGS COME PRE-PACKED WITH GREASE



ISO VIEWS  
 SCALE .688:1



BASE VIEW  
 SCALE 1.375:1



SECTION A-A  
 SCALE 1.375:1

**MATERIAL NOTES:**  
 OUTER - BEARING STEEL, HEAT TREATED  
 STUD - STRESSPROOF  
 BEARING ASSY. - 6201.2RS QTY (2)  
 SNAP RINGS - SPRING STEEL  
 END CAP - COLD ROLLED STEEL

CUSTOMER PART#	.XX = ± .01 .XXX = ± .005 .XXXX = ± .0005 ANGLES = ± 1' INCH [METRIC]
CHANGE NOTE:	
CPAR #54; ECO #4338	

CARTER MANUFACTURING IS NOT RESPONSIBLE FOR TYPOGRAPHICAL ERRORS

REVISION	
<b>B</b>	AUTHOR. BY
	DB
REV. BY	DATE
SGW	3/1/2010

**CARTER MANUFACTURING CO., INC.**  
 GRAND HAVEN, MICHIGAN 49417

PART NAME: ASSEMBLY			SHEET 1 OF 2		
	AUTHOR. BY	DRAWN BY	CHK'D BY	SALES	MATERIAL
	DB	RAM	MD	KR	NOTED
	DATE	DATE	DATE	DATE	DRAWING NO.
	3/1/2010	12/31/1996	3/1/2010	2/25/2010	FHRE-175-A