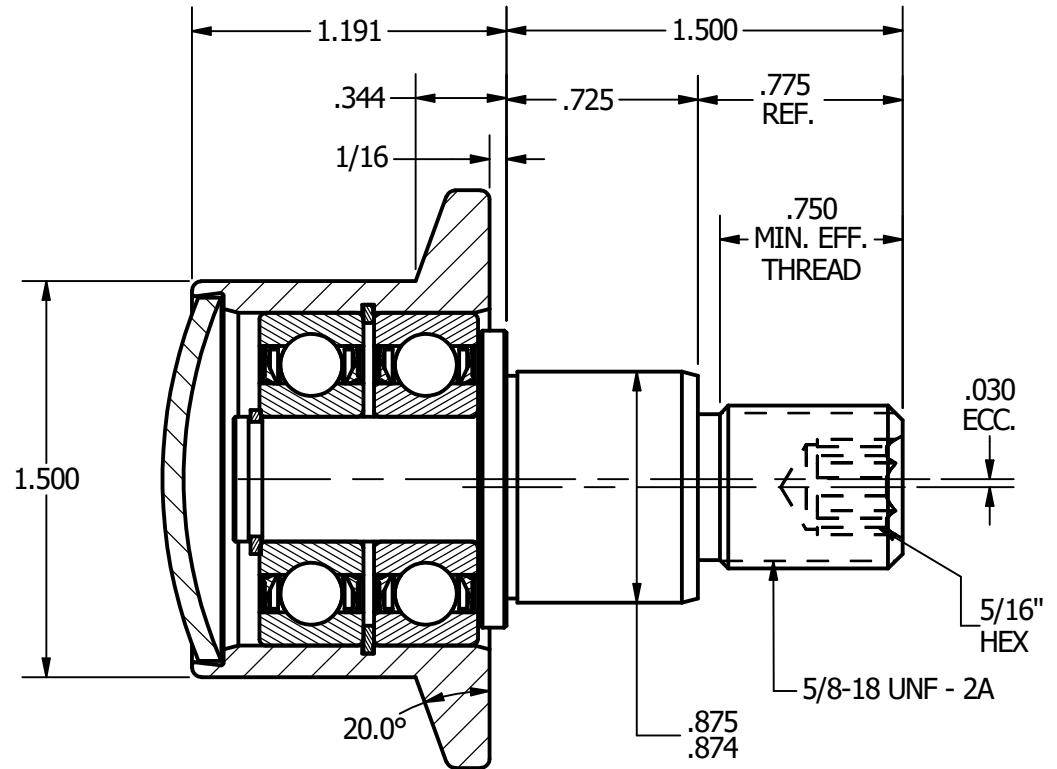
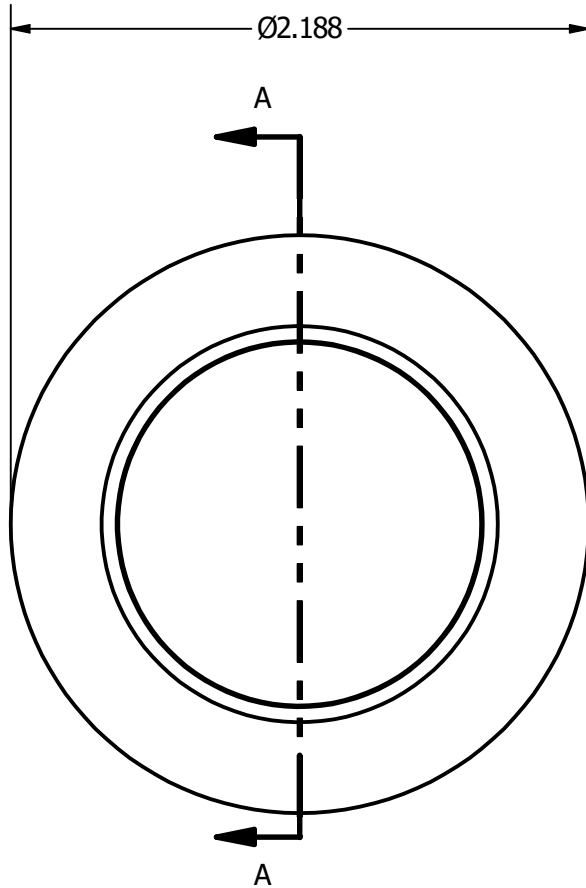
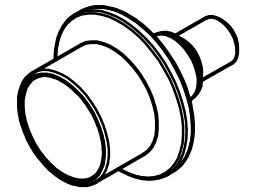


NOTES:
1. BEARING COMES PACKED WITH GREASE



RADIAL BASIC DYNAMIC RATING (POUNDS) 2750

DYNAMIC THRUST LOAD RATING (POUNDS) 1700

MAXIMUM STATIC CAPACITY (POUNDS) 1100

MATERIAL NOTES:

OUTER - BEARING STEEL, HEAT TREATED
STUD - STRESSPROOF
BEARING ASSY. - 6201.2RS QTY[2]
SNAP RINGS - SPRING STEEL
END CAP - COLD ROLLED STEEL

CUSTOMER PART#

.XX = .01
 .XXX = .005
 .XXXX = .0005
 ANGLES = 1°
 INCH [METRIC]

CARTER MANUFACTURING IS NOT RESPONSIBLE FOR TYPOGRAPHICAL ERRORS

CARTER MANUFACTURING CO., INC.

GRAND HAVEN, MICHIGAN 49417

REVISION

PART NAME: **ASSEMBLY**

SHEET 1 OF 2

CHANGE NOTE:

REV.	BY	DATE	DATE	DATE	DATE	DRAWING NO.
A	KevinR	2/11/2004	JGV	KPR	KPR	NOTED
JGV		2/11/2004	2/11/2004	2/11/2004	2/8/2004	FHRE-150-A