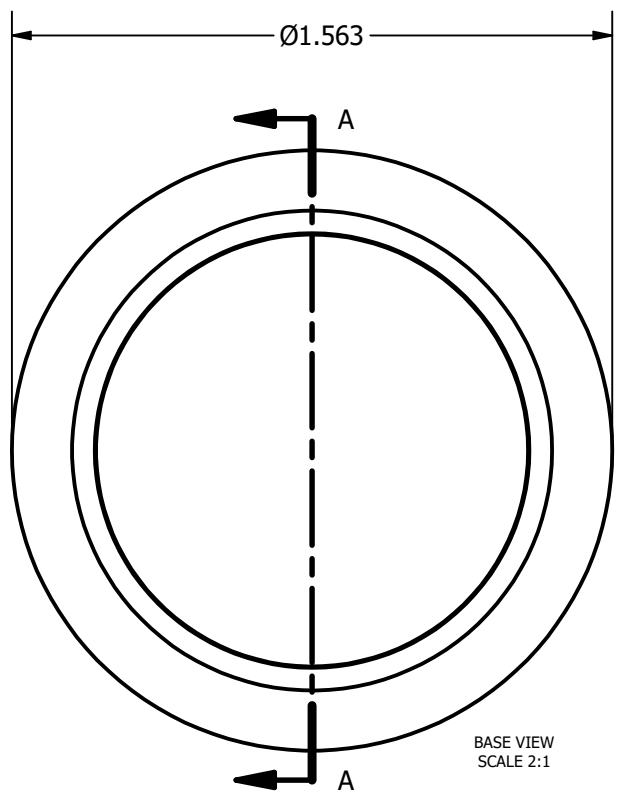
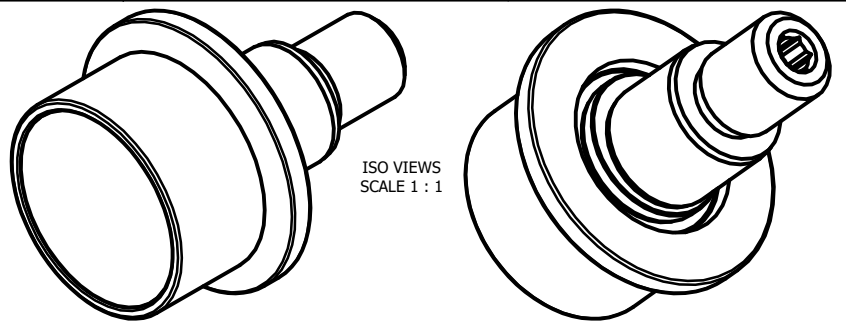
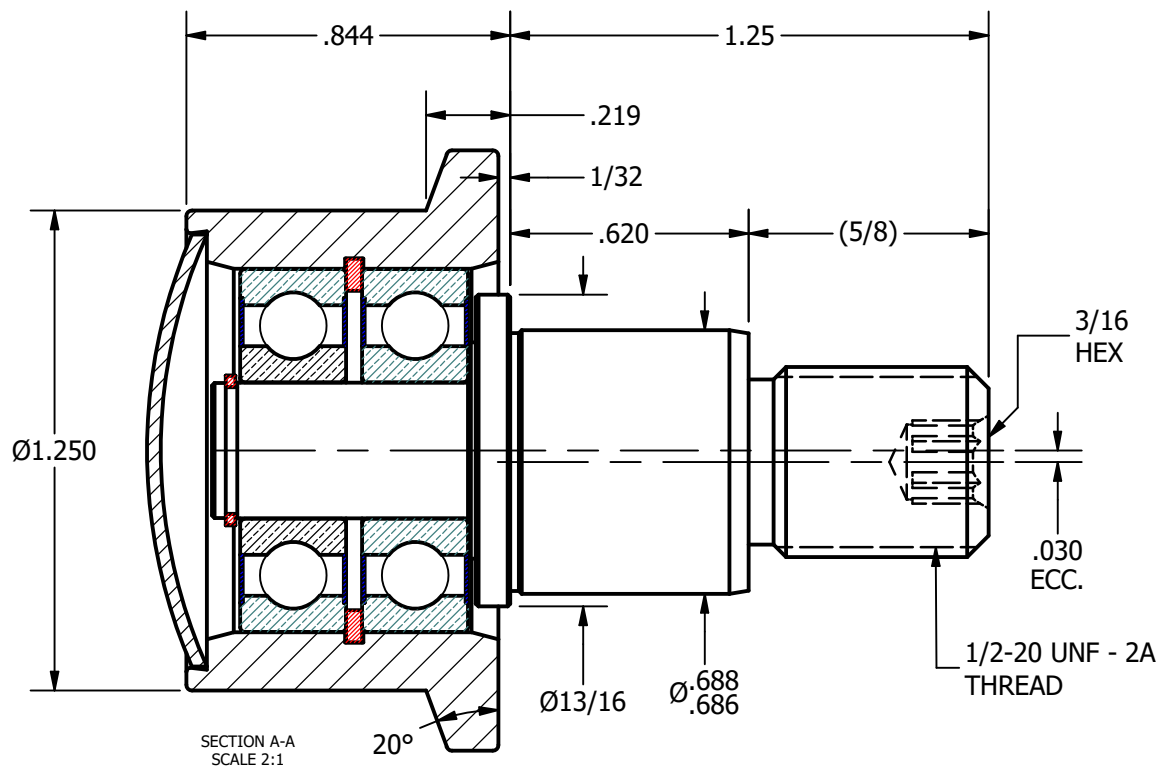


LOAD RATINGS	
RATING	Lbs
RADIAL BASIC DYNAMIC [C]	1,350
DYNAMIC THRUST LOAD	370
MAXIMUM STATIC CAPACITY [Co]	600

NOTES:  
 1. BALL BEARING COMES PRE-PACKED WITH GREASE  
 2. END CAP & STUD HAVE BLACK OXIDE ON ALL EXPOSED SURFACES



BASE VIEW  
SCALE 2:1



SECTION A-A  
SCALE 2:1

**MATERIAL NOTES:**  
 FLANGED OUTER ROLLER- BEARING STEEL, HEAT TREATED  
 STUD - COLD ROLLED STEEL  
 BEARING ASSY. - 609.2RS  
 SNAP RINGS - SPRING STEEL  
 END CAP - COLD ROLLED STEEL

CUSTOMER PART#	.XX = ± .01 .XXX = ± .005 .XXXX = ± .0005 ANGLES = ± 1' INCH [METRIC] FRACTION = ± 1/32
CHANGE NOTE:	

CARTER MANUFACTURING IS NOT RESPONSIBLE FOR TYPOGRAPHICAL ERRORS

**CARTER MANUFACTURING CO., INC.**  
 GRAND HAVEN, MICHIGAN 49417

REVISION		PART NAME: ASSEMBLY			SHEET 1 OF 2	
REV. BY	DATE	AUTHOR. BY	DRAWN BY	CHK'D BY	SALES	MATERIAL
SGW	8/15/2011	DB	SGW	MD	KR	NOTED
						DRAWING NO.
						<b>FHRE-125-A</b>