

LOAD RATINGS	
RATING	Lbs
RADIAL BASIC DYNAMIC	35,800
DYNAMIC THRUST LOAD	14,200
MAXIMUM STATIC CAPACITY	62,000

- NOTES:
1. BEARING IS PACKED WITH NLGI GRADE 2, LITHIUM BASED GREASE (UNLESS OTHERWISE SPECIFIED)
 2. ALL EXPOSED SURFACES HAVE BLACK OXIDE
 3. CUSTOM LASER ETCHING AVAILABLE UPON REQUEST

DRAWING NO. FHR-600-A

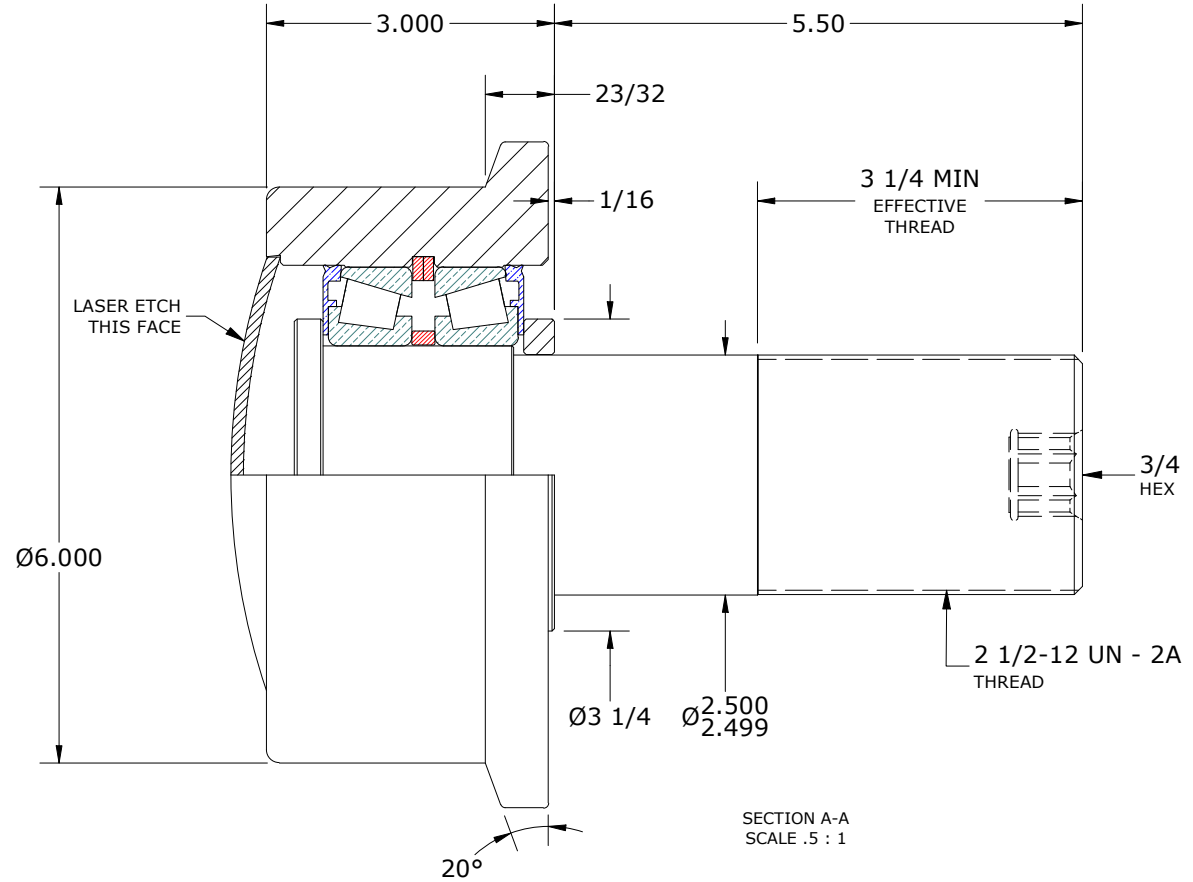
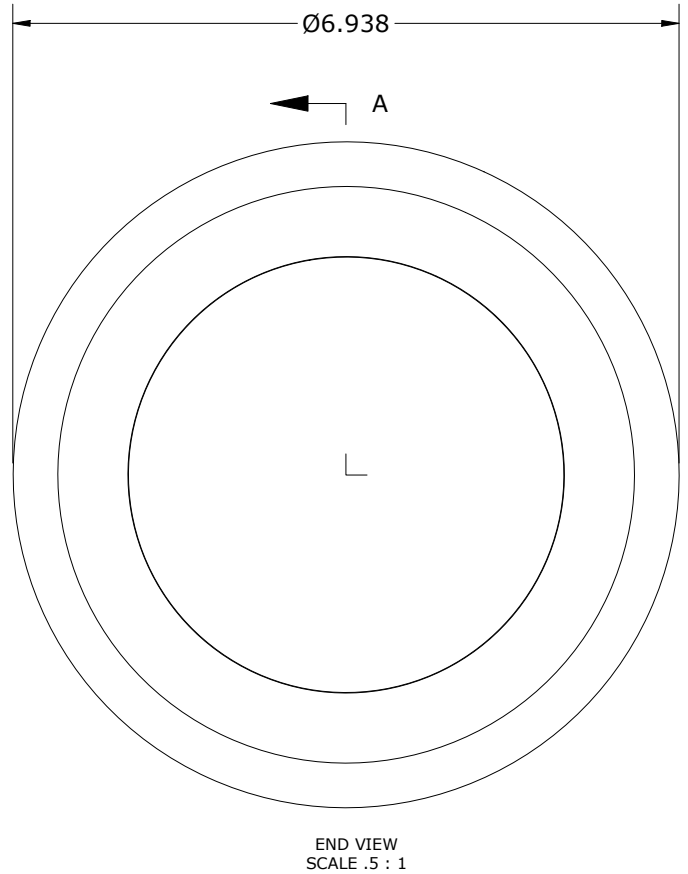


ISO VIEWS
SCALE .25 : 1

SIGNED DRAWING APPROVAL REQUIRED

PLEASE REVIEW AND VERIFY INFORMATION ON ALL SHEETS & RETURN COPY WITH SIGNED AND DATED APPROVAL, AND/OR REQUIRED CHANGES. CARTER WILL NOT PROCEED WITH ORDER UNTIL APPROVAL IS RECEIVED

SIGNED _____ DATE _____ APPROVED REJECTED



MATERIAL NOTES:

OUTER ROLLER HOUSING: BEARING STEEL, HEAT TREATED
 STUD: STEEL
 TAPERED SET: 395LA-90329 (MATCHED SET)
 WASHER: STEEL
 END CAP: STEEL

CUSTOMER PART#

XX = ± .01
 XXX = ± .005
 XXXX = ± .0005
 ANGLES = ± 2'
 INCH [METRIC]
 FRACTION = ± 1/64

CARTER MANUFACTURING IS NOT RESPONSIBLE FOR TYPOGRAPHICAL ERRORS

CARTER MANUFACTURING CO., INC.
 GRAND HAVEN, MICHIGAN 49417

ENGINEERING CHANGE ORDER NOTE

C

REVISION BY: MD
 DATE: 5/11/2018

REVISION

AUTHOR BY: HG
 DATE: 5/11/2018

PART NAME: ASSEMBLY

DRAWN BY: SGW
 DATE: 10/8/2008

PRODUCT TYPE: Hi-Roller™

CHECK'D BY: SGW
 DATE: 5/11/2018

SALES: KR
 DATE: 1/5/2016

MATERIAL: NOTED
 SHEET: 1 OF 2