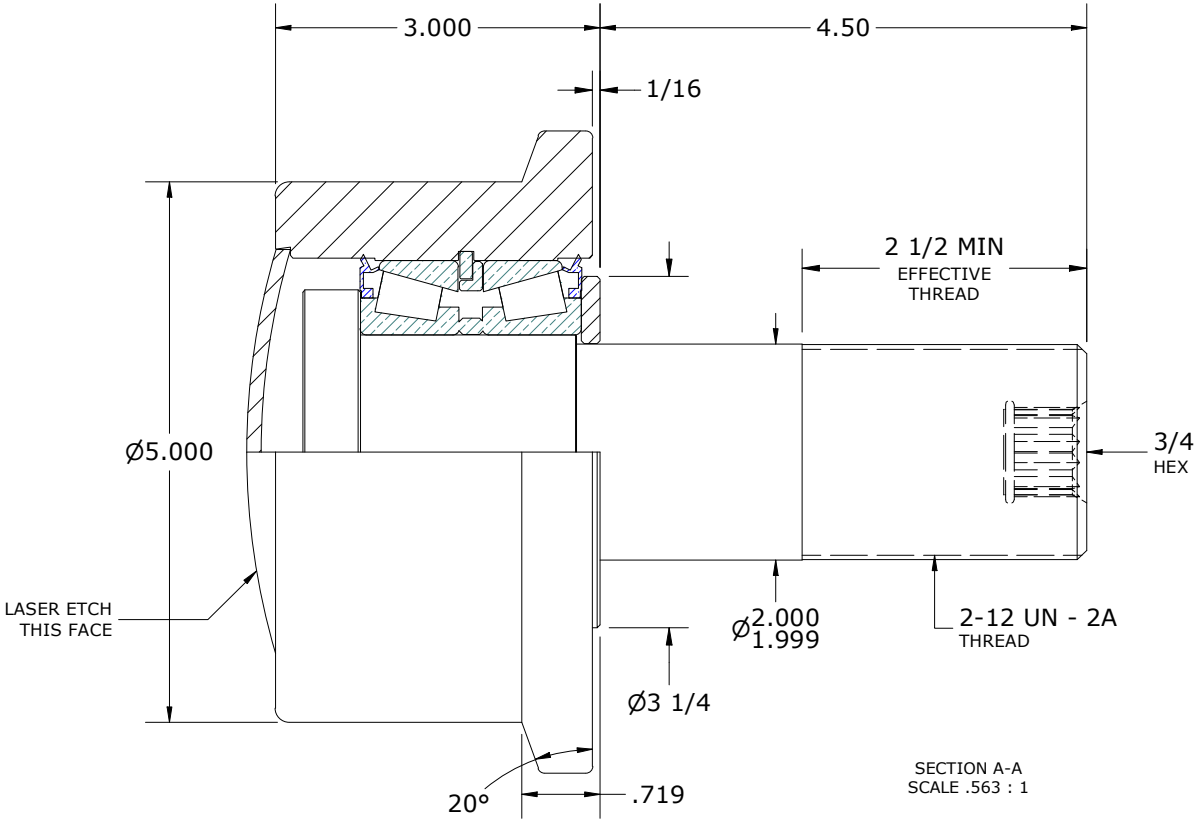
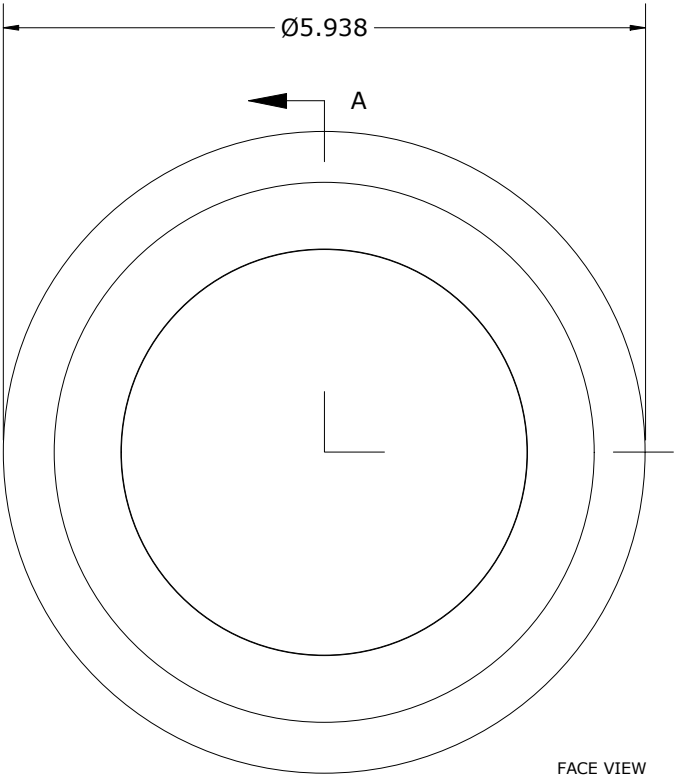
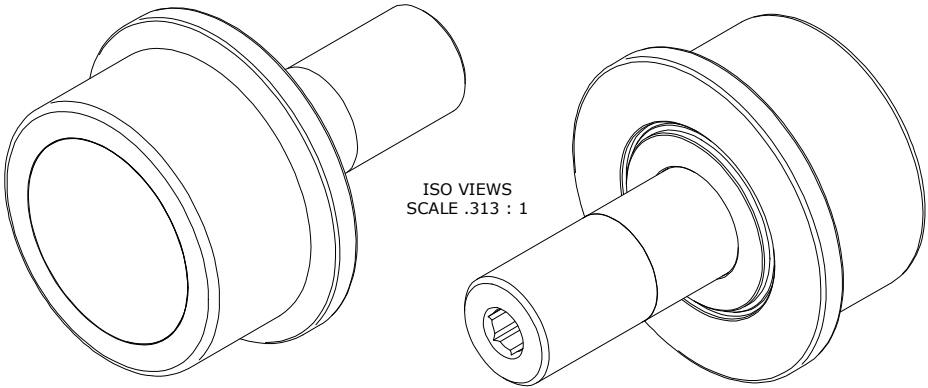


LOAD RATINGS		
RATING	lbf	Newtons
RADIAL BASIC DYNAMIC	33,290	148,081
STATIC THRUST LOAD	32,500	144,567
MAXIMUM STATIC CAPACITY	51,900	230,863

- NOTES:
1. BEARING IS PACKED WITH NLGI GRADE 2, LITHIUM BASED GREASE (UNLESS OTHERWISE SPECIFIED)
 2. ALL EXPOSED SURFACES HAVE BLACK OXIDE
 3. CUSTOM LASER ETCHING IS AVAILABLE UPON REQUEST

DRAWING NO.

FHR-500-A



MATERIAL NOTES: <div> OUTER RING - BEARING STEEL, HEAT TREATED STUD - STEEL WASHER - STEEL END CAP - STEEL TAPERED SET - TIMKEN P/N: JLM-506489-30 OR EQUIVALENT SEAL(S) - SYNTHETIC </div>	CUSTOMER PART#	XX = ± .01 XXX = ± .005 XXXX = ± .0005 ANGLES = ± 2° INCH (METRIC) FRACTION = ± 1/64	CARTER MANUFACTURING IS NOT RESPONSIBLE FOR TYPOGRAPHICAL ERRORS		CARTER MANUFACTURING CO., INC. GRAND HAVEN, MICHIGAN 49417			
	ENGINEERING CHANGE ORDER NOTE		REVISION		PART NAME: ASSEMBLY			PRODUCT TYPE: Hi-Rollers™
			D	AUTHOR BY HG	DRAWN BY AJH	CHK'D BY MD	SALES KR	MATERIAL NOTED
			REVISION BY DJB	DATE 3/14/2024	DATE 12/14/2001	DATE 3/14/2024	DATE 3/27/2017	SHEET 1 OF 2
	CARTER STANDARD SURFACE FINISH IS MEASURED IN "Ra" UNITS UNLESS OTHERWISE SPECIFIED.							