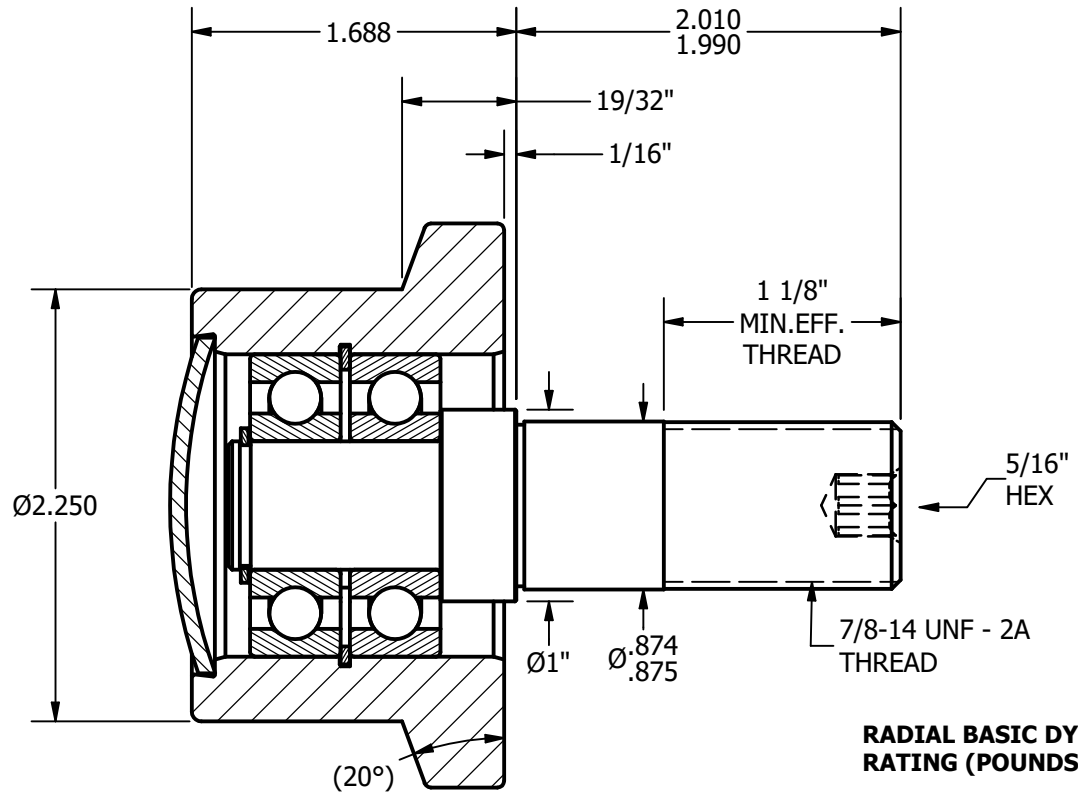
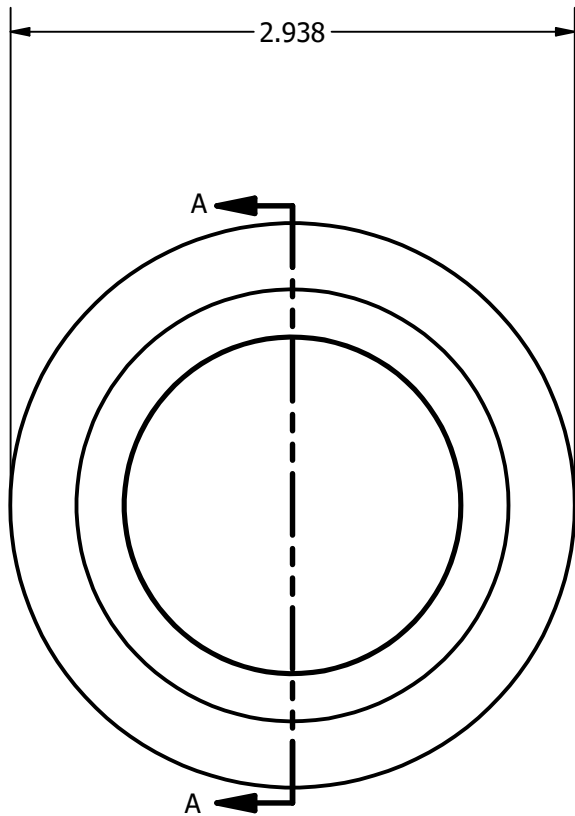
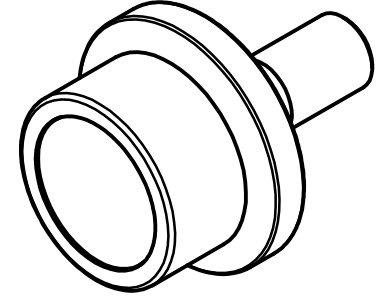


NOTES;
1. BEARINGS COME PACKED WITH GREASE



RADIAL BASIC DYNAMIC RATING (POUNDS) 3,820

DYNAMIC THRUST LOAD RATING (POUNDS) 2,380

MAXIMUM STATIC CAPACITY (POUNDS) 1,620

MATERIAL NOTES:

**OUTER - BEARING STEEL, HEAT TREATED
 STUD - STRESSPROOF
 BEARING ASSEMBLY - 6203.2RS QTY(2)
 SNAP RINGS - SPRING STEEL
 END CAP - COLD ROLLED STEEL**

CUSTOMER PART#

.XX = ± .01
 .XXX = ± .005
 .XXXX = ± .0005
 ANGLES = ± 1'
 INCH [METRIC]

CARTER MANUFACTURING IS NOT RESPONSIBLE FOR TYPOGRAPHICAL ERRORS

CARTER MANUFACTURING CO., INC.

GRAND HAVEN, MICHIGAN 49417

REVISION

PART NAME: ASSEMBLY

SHEET 1 OF 2

CHANGE NOTE:

REV. BY	AUTHOR. BY	DRAWN BY	CHK'D BY	SALES	MATERIAL
SGW	DB	SGW	DB	KPR	NOTED
	DATE	DATE	DATE	DATE	DRAWING NO.
	5/28/2008	5/28/2008	5/28/2008	5/27/2008	FHR-225-A