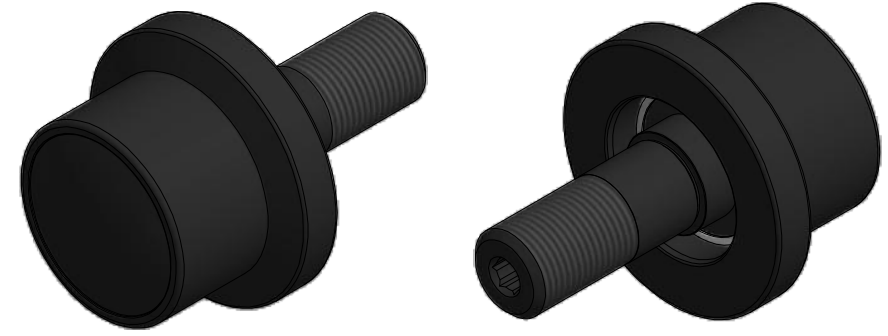


LOAD RATINGS		
RATING	lbf	Newtons
RADIAL BASIC DYNAMIC	3,830	17,037
STATIC THRUST LOAD	1,000	14,448
MAXIMUM STATIC CAPACITY	1,620	7,206

NOTES:
 1. BALL BEARINGS COME PRE-PACKED WITH GREASE.
 2. ALL EXPOSED SURFACES HAVE BLACK OXIDE
 3. CUSTOM LASER ETCHING IS AVAILABLE UPON REQUEST

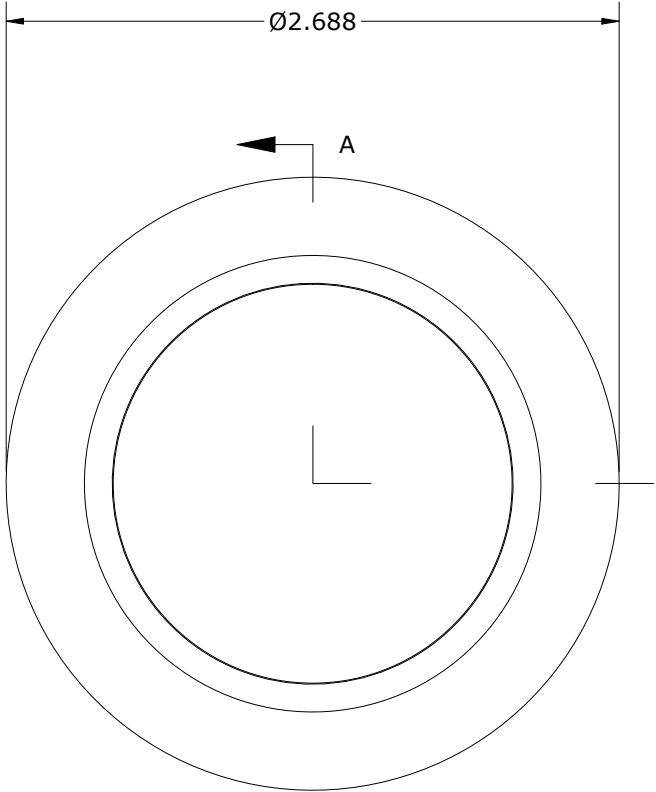
MS NO. _____ NSN NO. _____ DRAWING NO. FHR-200-A



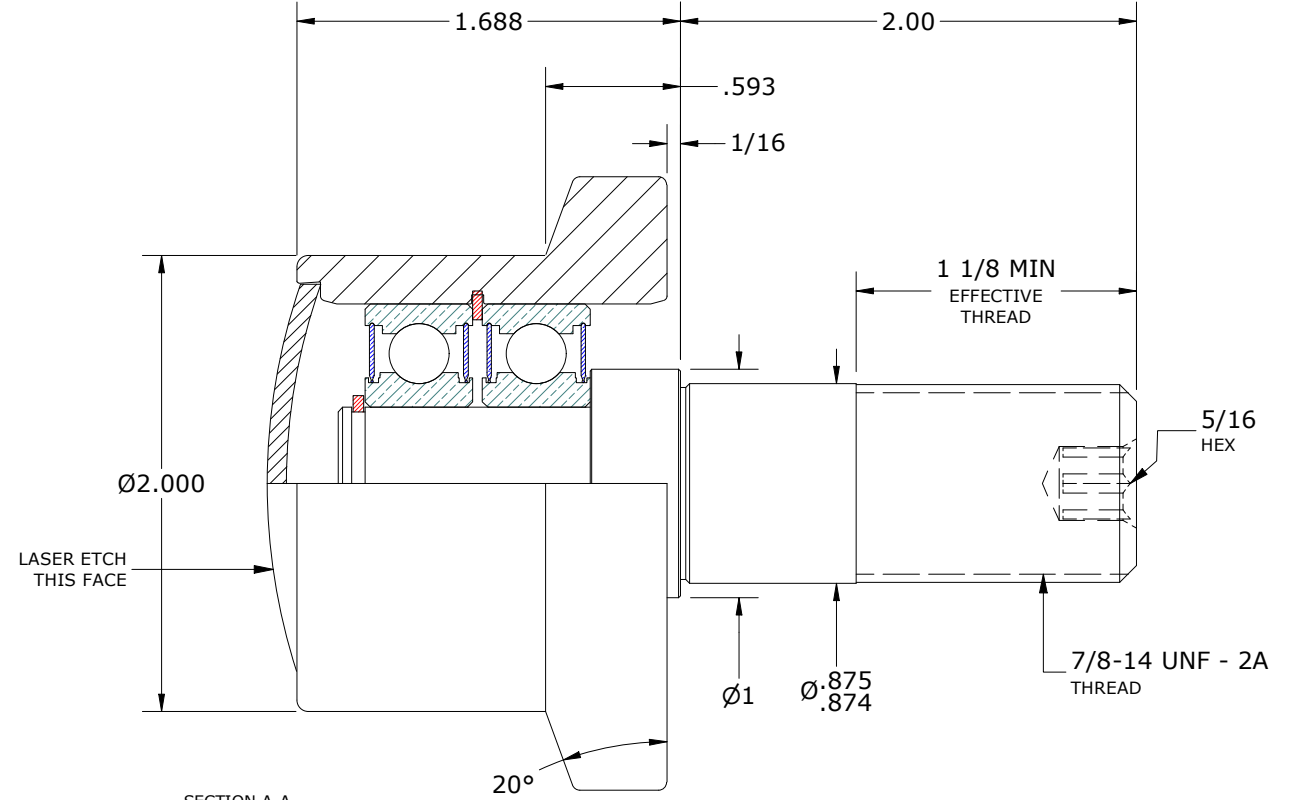
SIGNED DRAWING APPROVAL REQUIRED

PLEASE REVIEW AND VERIFY INFORMATION ON ALL SHEETS & RETURN COPY WITH SIGNED AND DATED APPROVAL, AND/OR REQUIRED CHANGES. CARTER WILL NOT PROCEED WITH ORDER UNTIL APPROVAL IS RECEIVED

 SIGNED DATE APPROVED REJECTED



HEAD: END VIEW
 SCALE 1.188 : 1



SECTION A-A
 SCALE 1.188 : 1

MATERIAL NOTES:

OUTER ROLLER- BEARING STEEL, HEAT TREATED
 STUD - STEEL
 BEARING ASSY. - 6203.2RS
 SNAP RINGS - SPRING STEEL
 END CAP - STEEL

CUSTOMER PART# _____
 XX = ± .01
 XXX = ± .005
 XXXX = ± .0005
 ANGLES = ± 1'
 INCH [METRIC]
 FRACTION = ± 1/32

CARTER MANUFACTURING IS NOT RESPONSIBLE FOR TYPOGRAPHICAL ERRORS

CARTER MANUFACTURING CO., INC.
 GRAND HAVEN, MICHIGAN 49417

ENGINEERING CHANGE ORDER NOTE

REVISION		PART NAME: ASSEMBLY			PRODUCT TYPE: FHR	
C	AUTHOR BY HG	DRAWN BY AJH	CHK'D BY MD	SALES NC	MATERIAL NOTED	
REVISION BY SGW	DATE 4/22/2021	DATE 9/9/2002	DATE 4/22/2021	DATE 4/22/2021	SHEET 1 OF 2	