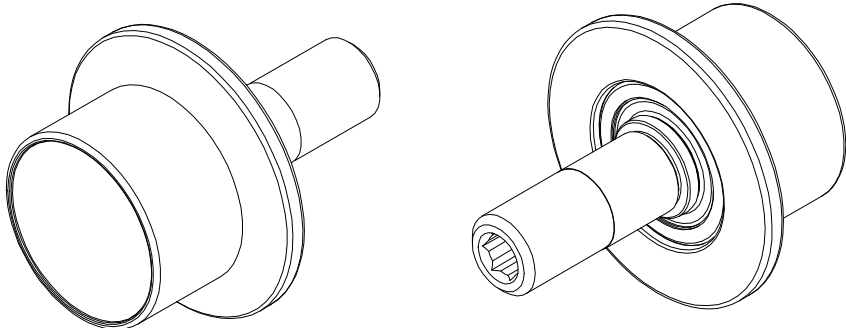


LOAD RATINGS	
RATING	Lbs
RADIAL BASIC DYNAMIC	2,300
DYNAMIC THRUST LOAD	1,800
MAXIMUM STATIC CAPACITY	1,300

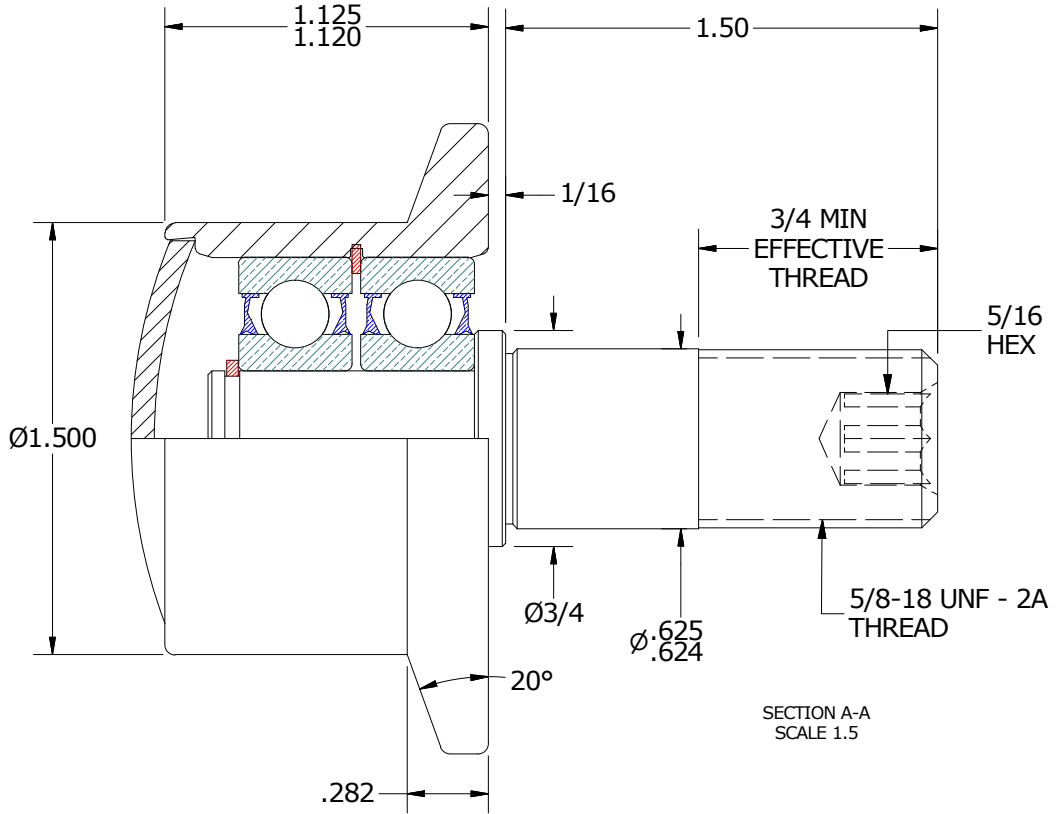
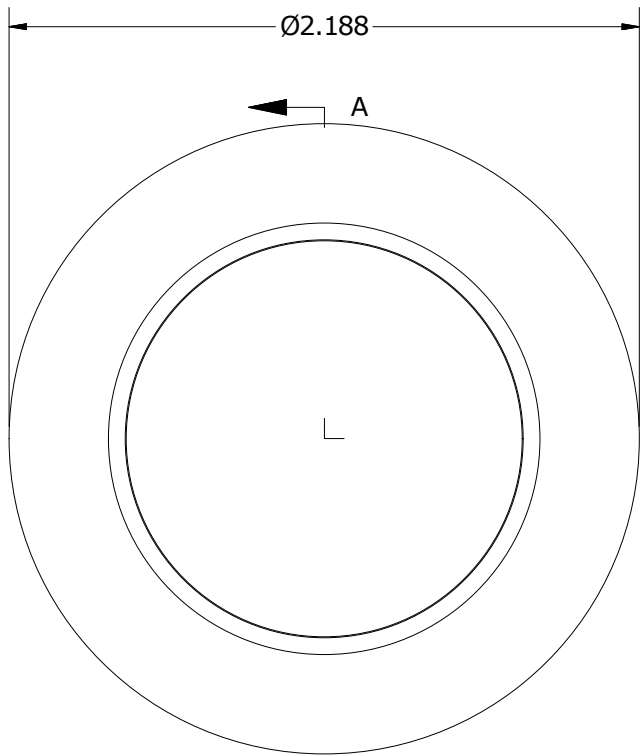
NOTES:  
 1. BALL BEARINGS COME PRE-PACKED WITH GREASE  
 2. STUD & END CAP HAVE BLACK OXIDE ON ALL EXPOSED SURFACES



**SIGNED DRAWING APPROVAL REQUIRED**

PLEASE REVIEW AND VERIFY INFORMATION ON ALL SHEETS & RETURN COPY WITH SIGNED AND DATED APPROVAL, AND/OR REQUIRED CHANGES. CARTER WILL NOT PROCEED WITH ORDER UNTIL APPROVAL IS RECEIVED

SIGNED \_\_\_\_\_ DATE \_\_\_\_\_ APPROVED  REJECTED



MATERIAL NOTES:

OUTER - BEARING STEEL, HEAT TREATED  
 STUD - COLD ROLLED STEEL  
 END CAP - COLD ROLLED STEEL  
 BEARING ASSEMBLIES - 62012RS  
 RETAINING RINGS - SPRING STEEL

CUSTOMER PART# \_\_\_\_\_  
 XX = ± .01  
 XXX = ± .005  
 XXXX = ± .0005  
 ANGLES = ± 1'  
 INCH [METRIC]  
 FRACTION = ± 1/32

CARTER MANUFACTURING IS NOT RESPONSIBLE FOR TYPOGRAPHICAL ERRORS

**CARTER MANUFACTURING CO., INC.**  
 GRAND HAVEN, MICHIGAN 49417

ENGINEERING CHANGE ORDER NOTE		REVISION		PART NAME: ASSEMBLY			
		C	AUTHOR BY	DRAWN BY	CHK'D BY	SALES	MATERIAL
			HG	RAM	MD	KR	NOTED
			REVISION BY	DATE	DATE	DATE	DATE
		SGW	3/4/2015	12/31/1996	3/4/2015	3/4/2015	1 OF 3