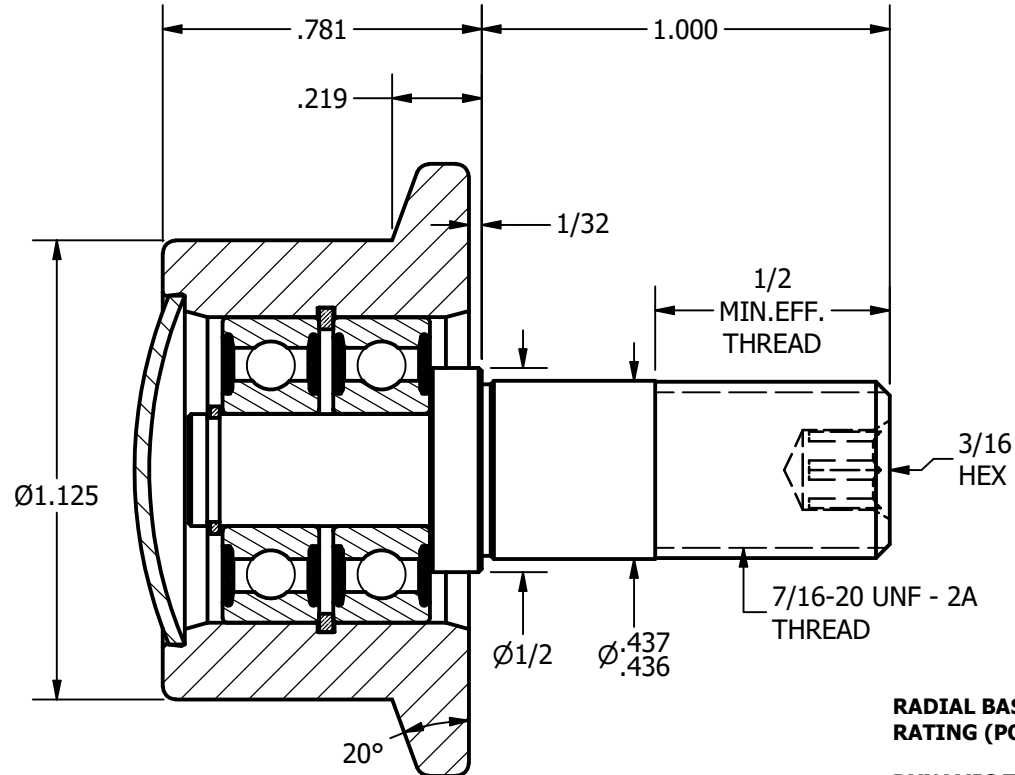
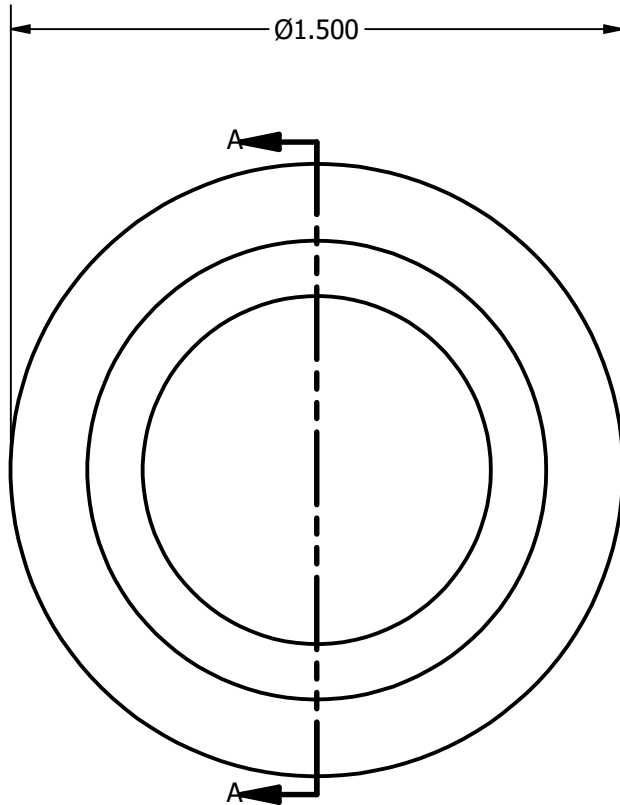
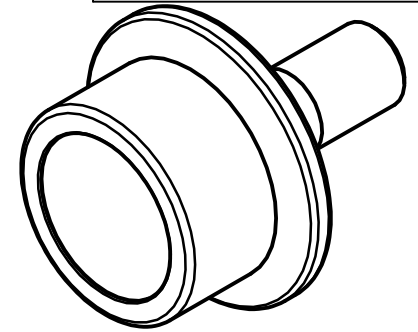


NOTES:
1. BEARING COMES PACKED WITH GREASE

DRAWING NO. FHR-112-A



RADIAL BASIC DYNAMIC
RATING (POUNDS) 625

DYNAMIC THRUST LOAD
RATING (POUNDS) 385

MAXIMUM STATIC CAPACITY
(POUNDS) 225

MATERIAL NOTES:

OUTER - BEARING STEEL, HEAT TREATED
STUD - COLD ROLLED STEEL
BEARING ASSY. - 607.2RS
SNAP RINGS - SPRING STEEL
END CAP - COLD ROLLED STEEL

CUSTOMER PART#

.XX = $\pm .01$
.XXX = $\pm .005$
.XXXX = $\pm .0005$
ANGLES = $\pm 1^\circ$
INCH [METRIC]

CARTER MANUFACTURING IS
NOT RESPONSIBLE FOR
TYPOGRAPHICAL ERRORS

CARTER MANUFACTURING CO., INC.

GRAND HAVEN, MICHIGAN 49417

REVISION

PART NAME: ASSEMBLY

SHEET 1 OF 2

CHANGE NOTE:

A

AUTHOR. BY

DRAWN BY

CHK'D BY

SALES

MATERIAL

DB

SGW

MD

KR

NOTED

REV. BY

DATE

DATE

DATE

DATE

DRAWING NO.

SGW

3/24/2009

2/27/2009

3/24/2009

3/16/2009

FHR-112-A