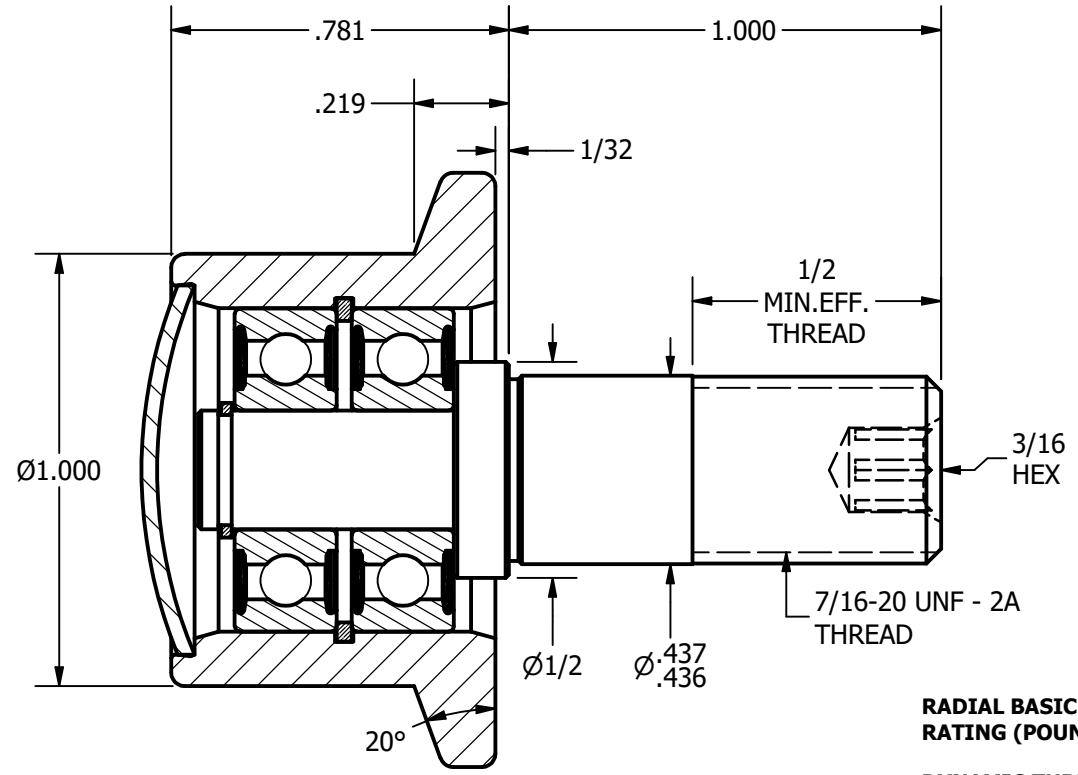
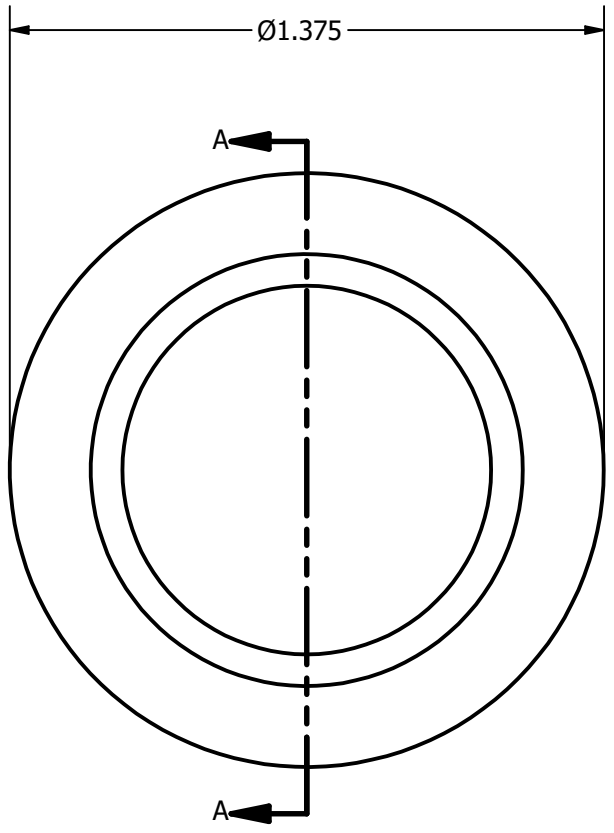
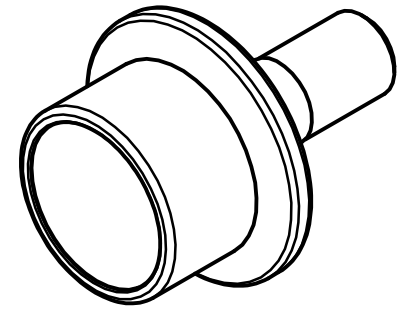


NOTES:
1. BEARING COMES PACKED WITH GREASE



RADIAL BASIC DYNAMIC RATING (POUNDS) 625
DYNAMIC THRUST LOAD RATING (POUNDS) 385
MAXIMUM STATIC CAPACITY (POUNDS) 225

MATERIAL NOTES:
OUTER - BEARING STEEL, HEAT TREATED
STUD - COLD ROLLED STEEL
BEARING ASSY. - 607.2RS
SNAP RINGS - SPRING STEEL
END CAP - COLD ROLLED STEEL

CUSTOMER PART#	.XX = ± .01 .XXX = ± .005 .XXXX = ± .0005 ANGLES = ± 1' INCH [METRIC]
CHANGE NOTE:	

CARTER MANUFACTURING IS NOT RESPONSIBLE FOR TYPOGRAPHICAL ERRORS	
REVISION	
A	AUTHOR. BY DB
REV. BY SGW	DATE 3/24/2009

CARTER MANUFACTURING CO., INC.					
GRAND HAVEN, MICHIGAN 49417					
PART NAME: ASSEMBLY			SHEET 1 OF 2		
SALES	MATERIAL	DATE	DATE	DATE	DRAWING NO.
KR	NOTED	3/16/2009	2/27/2009	3/24/2009	FHR-100-A