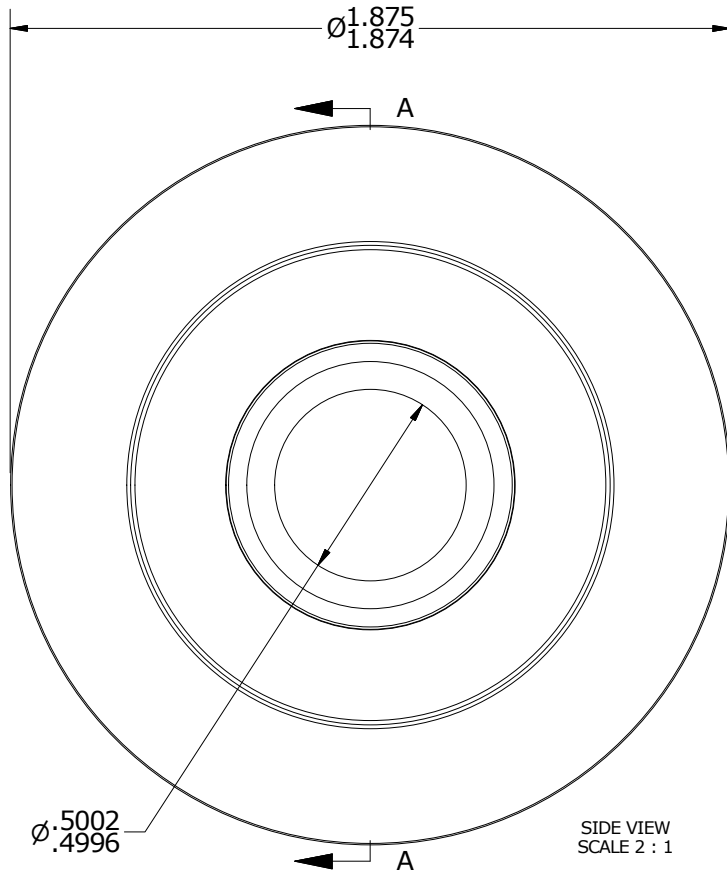
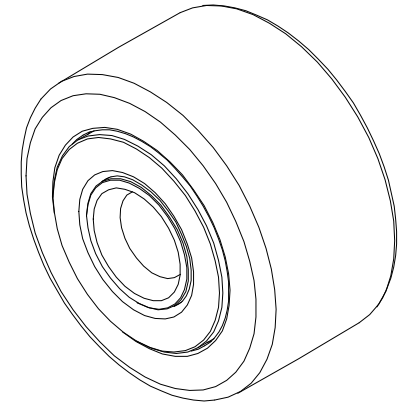
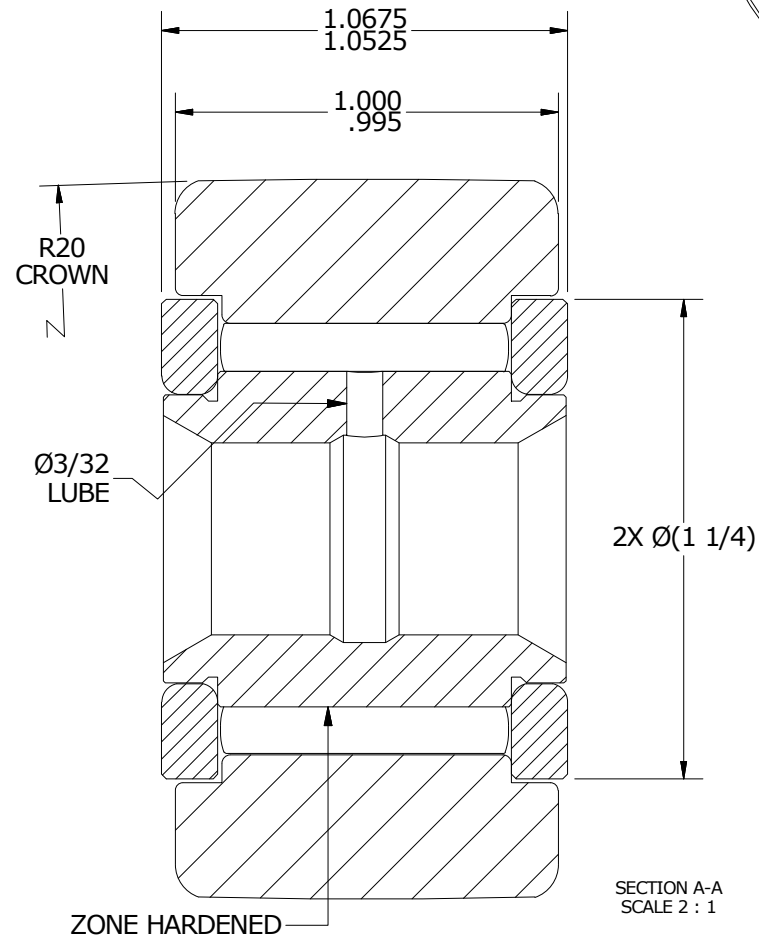


## NOTES:

1. BEARING IS PACKED WITH NLGI GRADE 2, LITHIUM BASED GREASE (UNLESS OTHERWISE SPECIFIED)
2. ALL EXPOSED SURFACES HAVE BLACK OXIDE

ISO VIEW  
SCALE 1 : 1SIDE VIEW  
SCALE 2 : 1SECTION A-A  
SCALE 2 : 1

## MATERIAL NOTES:

OUTER RING - BEARING STEEL, HEAT TREATED  
INNER RING - BEARING STEEL, ZONE HARDENED  
NEEDLE(S) ROLLER(S) - BEARING STEEL, HEAT TREATED  
WASHER(S) - COLD ROLLED STEEL, HEAT TREATED\*\*

\*\*(DEPENDING ON MATERIAL AVAILABILITY MAY BE CONSTRUCTED FROM COLD ROLLED STEEL)

CUSTOMER PART#

XX = ± .01  
XXX = ± .005  
XXXX = ± .0005  
ANGLES = ± 1°  
INCH [METRIC]  
FRACTION = ± 1/32

CARTER MANUFACTURING IS  
NOT RESPONSIBLE FOR  
TYPOGRAPHICAL ERRORS**CARTER MANUFACTURING CO., INC.**

GRAND HAVEN, MICHIGAN 49417

## REVISION

PART NAME: ASSEMBLY

A

AUTHOR BY  
HGDRAWN BY  
SGWCHK'D BY  
MDSALES  
KRMATERIAL  
NOTEDREVISION BY  
SGWDATE  
10/21/2016DATE  
10/21/2016DATE  
10/21/2016DATE  
10/21/2016SHEET  
1 OF 2