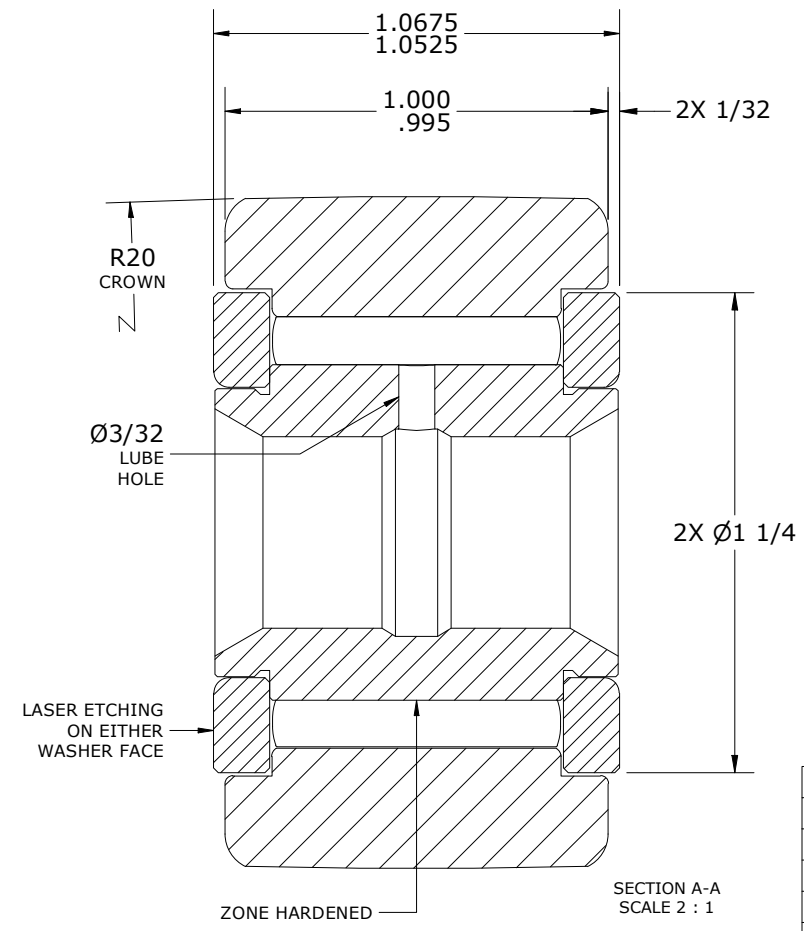
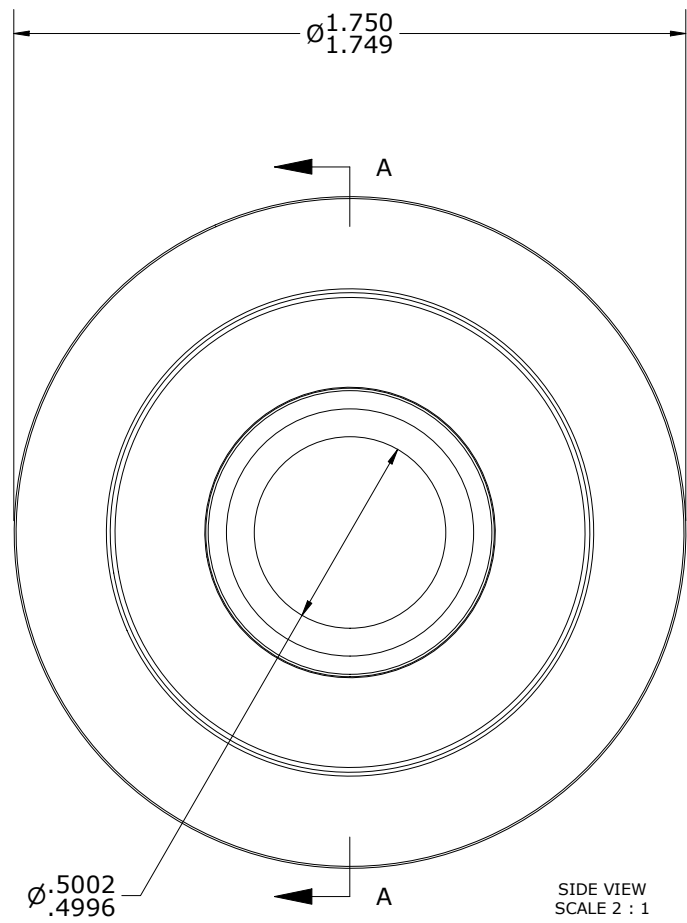
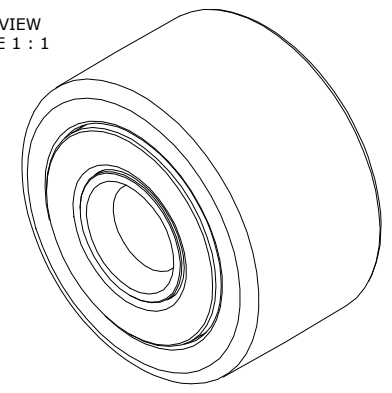


LOAD RATINGS		
RATING	lbf	Newtons
RADIAL BASIC DYNAMIC	6,385	28,402
MAXIMUM STATIC CAPACITY	15,840	70,460

- NOTES:
- BEARING IS PACKED WITH NLGI GRADE 2, LITHIUM BASED GREASE (UNLESS OTHERWISE SPECIFIED)
 - ALL EXPOSED SURFACES AS MOUNTED HAVE BLACK OXIDE
 - LIMITING SPEED:
 - GREASE = 2,200 RPM
 - CUSTOM LASER ETCHING UPON REQUEST

ISO VIEW
SCALE 1 : 1



Recommended Shaft Fits		
Fit Type - Dimension	Ø (Inch)	Ø (mm)
Push - Max	.4997	12.6924
Push - Min	.4993	12.6822
Drive - Max	.5003	12.7076
Drive - Min	.4999	12.6975
Press - Max	.5007	12.7178
Press - Min	.5003	12.7076

MATERIAL NOTES:

OUTER RING - BEARING STEEL, HEAT TREATED

INNER RING - BEARING STEEL, ZONE HARDENED

NEEDLE ROLLER(S) - BEARING STEEL, HEAT TREATED

WASHER(S) - BEARING STEEL, HEAT TREATED

CUSTOMER PART#	XX = ± .01 XXX = ± .005 XXXX = ± .0005 ANGLES = ± 2' INCH [METRIC] FRACTION = ± 1/64
ENGINEERING CHANGE ORDER NOTE	
CARTER STANDARD SURFACE FINISH IS MEASURED IN "Ra" UNITS UNLESS OTHERWISE SPECIFIED.	

CARTER MANUFACTURING IS NOT RESPONSIBLE FOR TYPOGRAPHICAL ERRORS				CARTER MANUFACTURING CO., INC. GRAND HAVEN, MICHIGAN 49417			
REVISION		PART NAME: ASSEMBLY		PRODUCT TYPE: Standard CF/YR			
D	AUTHOR BY HG	DRAWN BY SGW	CHK'D BY MD	SALES NC	MATERIAL NOTED		
REVISION BY DJB	DATE 4/4/2024	DATE 2/27/2007	DATE 4/4/2024	DATE 4/4/2024	SHEET 1 OF 2		