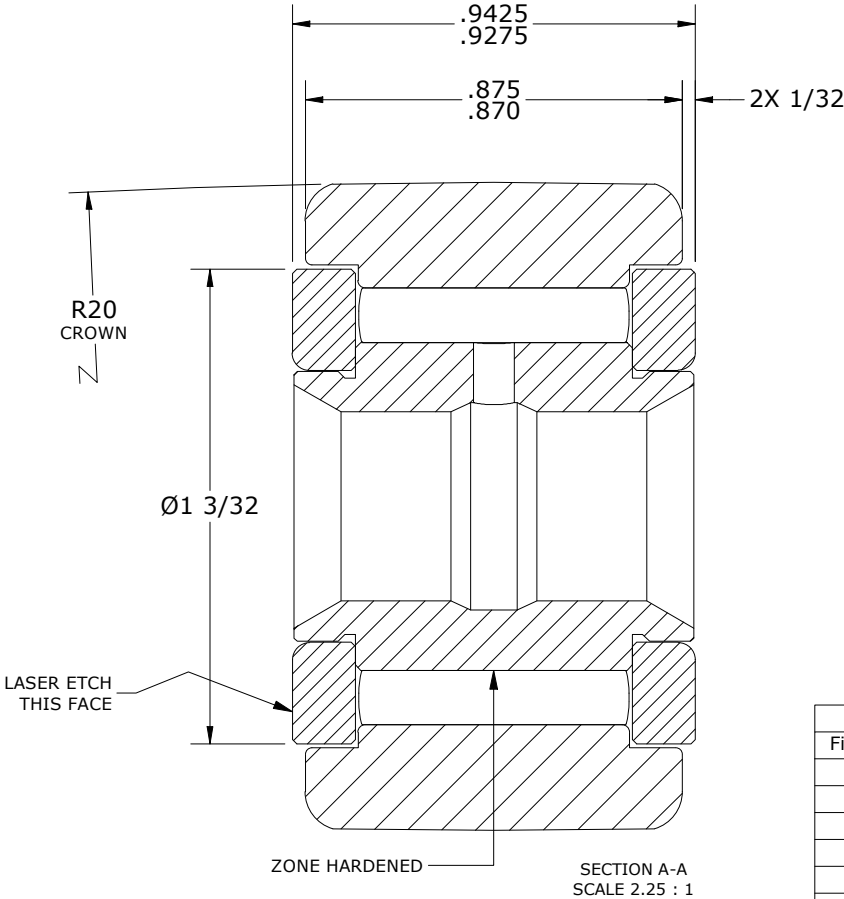
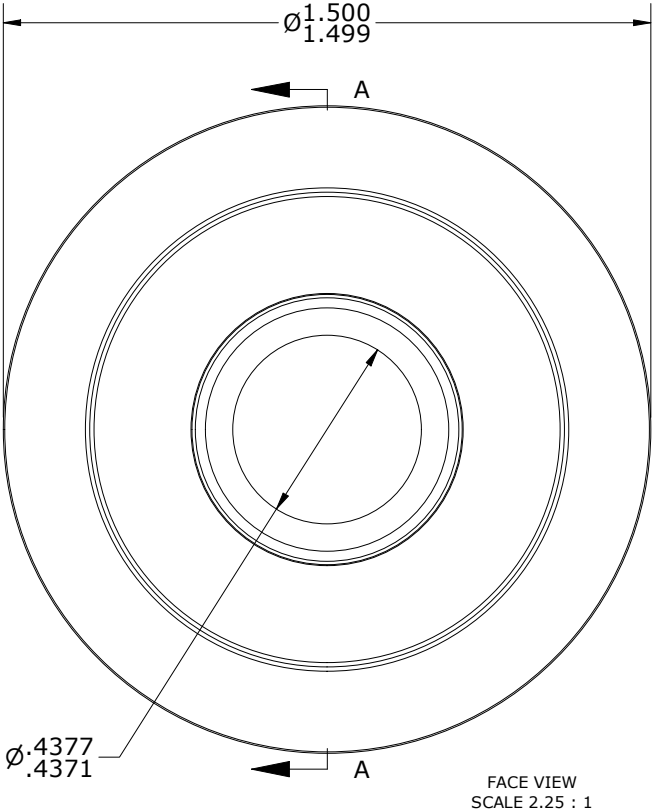
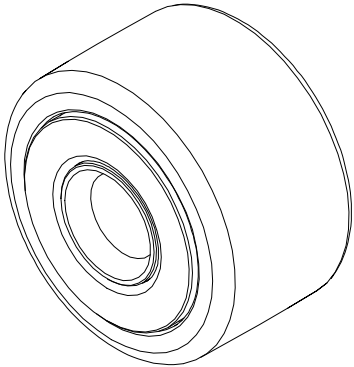


LOAD RATINGS		
RATING	lbf	Newtons
RADIAL BASIC DYNAMIC	4,840	21,529
MAXIMUM STATIC CAPACITY	11,280	50,176

- NOTES:
1. BEARING IS PACKED WITH NLGI GRADE 2, LITHIUM BASED GREASE (UNLESS OTHERWISE SPECIFIED).
 2. ALL EXPOSED SURFACES HAVE BLACK OXIDE.
 3. LIMITING SPEED:
A. GREASE = 2,500 RPM.
 4. CUSTOM LASER ETCHING AVAILABLE UPON REQUEST.

MS NO.	NSN NO.	DRAWING NO.	CYNB-48
--------	---------	-------------	---------

ISO VIEW
SCALE 1.125 : 1



Recommended Shaft Fits		
Fit Type - Dimension	Ø (Inch)	Ø (mm)
Push - Max	.4372	11.1049
Push - Min	.4368	11.0947
Drive - Max	.4378	11.1201
Drive - Min	.4374	11.1100
Press - Max	.4380	11.1252
Press - Min	.4376	11.1150

MATERIAL NOTES:

OUTER RING - BEARING STEEL, HEAT TREATED
 INNER RING - BEARING STEEL, ZONE HARDENED
 NEEDLE ROLLER(S) - BEARING STEEL, HEAT TREATED
 WASHER - BEARING STEEL, HEAT TREATED

CUSTOMER PART#
 XX = ± .01
 XXX = ± .005
 XXXX = ± .0005
 ANGLES = ± 1'
 INCH [METRIC]
 FRACTION = ± 1/32

ENGINEERING CHANGE ORDER NOTE

CARTER MANUFACTURING IS
 NOT RESPONSIBLE FOR
 TYPOGRAPHICAL ERRORS

REVISION

C

REVISION BY

SGW

AUTHOR BY

HG

DATE

2/25/2021

CARTER MANUFACTURING CO., INC.
 GRAND HAVEN, MICHIGAN 49417

PART NAME: ASSEMBLY

PRODUCT TYPE: YNB

DRAWN BY

MD

DATE

10/15/2010

CHK'D BY

MD

DATE

2/25/2021

SALES

NC

DATE

2/25/2021

MATERIAL

NOTED

SHEET

1 OF 2