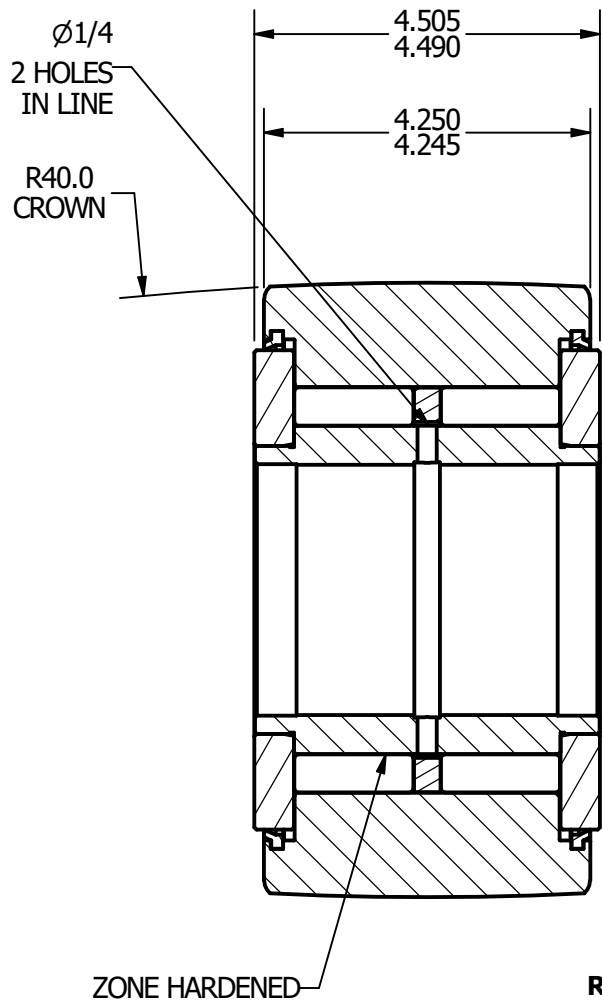
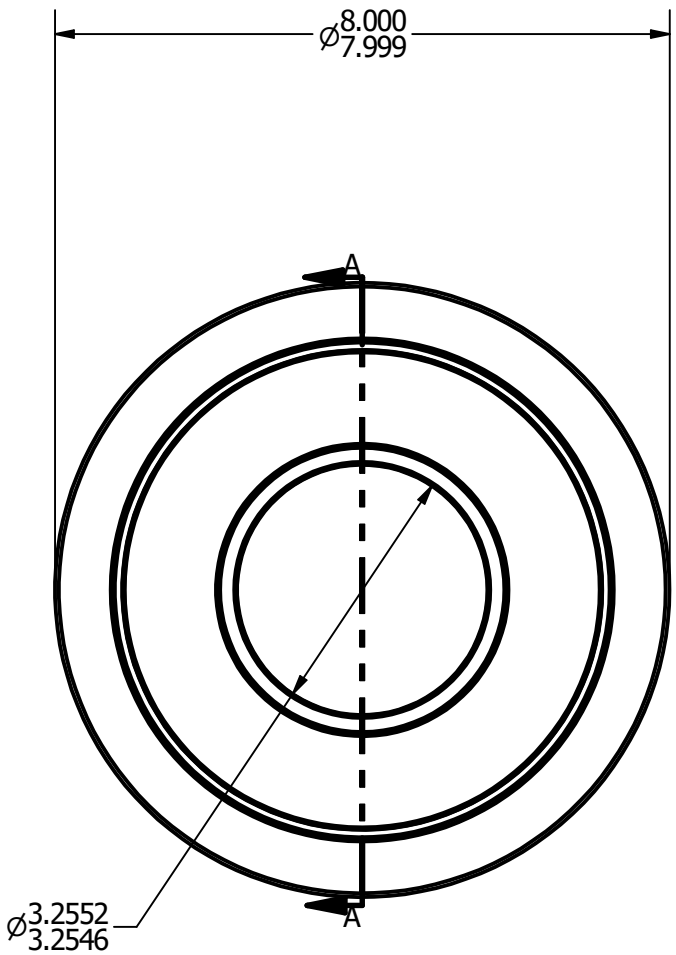
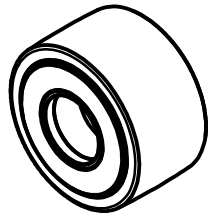


NOTES:
1. BEARING IS PACKED WITH GREASE
2. ALL EXPOSED SURFACES ARE BLACK OXIDED



RADIAL BASIC DYNAMIC RATING (POUNDS) 92,200
MAXIMUM STATIC CAPACITY (POUNDS) 288,200

MATERIAL NOTES: OUTER - BEARING STEEL, HEAT TREATED STUD - BEARING STEEL, ZONE HARDENED NEEDLE - BEARING STEEL, HEAT TREATED SPACER - BEARING STEEL, HEAT TREATED WASHER - COLD ROLLED STEEL, HEAT TREATED SEAL - SYNTHETIC	CUSTOMER PART#	.XX = ± .01 .XXX = ± .005 .XXXX = ± .0005 ANGLES = ± 1° INCH [METRIC]	CARTER MANUFACTURING IS NOT RESPONSIBLE FOR TYPOGRAPHICAL ERRORS		CARTER MANUFACTURING CO., INC. GRAND HAVEN, MICHIGAN 49417					
	CHANGE NOTE:		REVISION		PART NAME: ASSEMBLY					SHEET 1 OF 2
			A	AUTHOR. BY	DRAWN BY	CHK'D BY	SALES	MATERIAL		
					JAF				NOTED	
				REV. BY	DATE	DATE	DATE	DATE	DRAWING NO.	
		JAF			8/3/2006			CYNB-256-S		