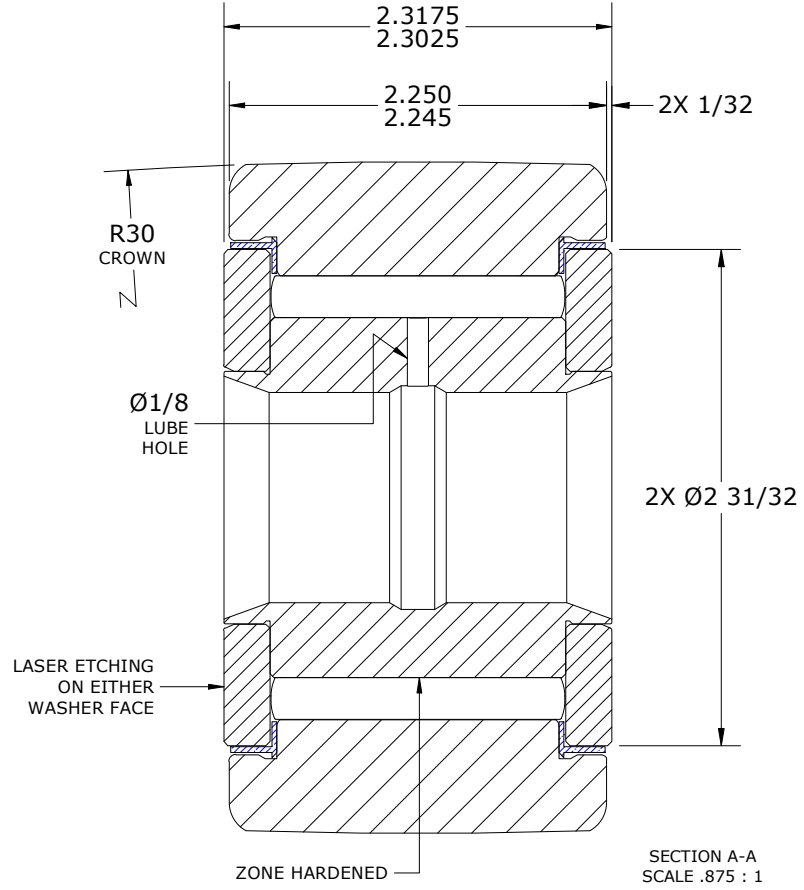
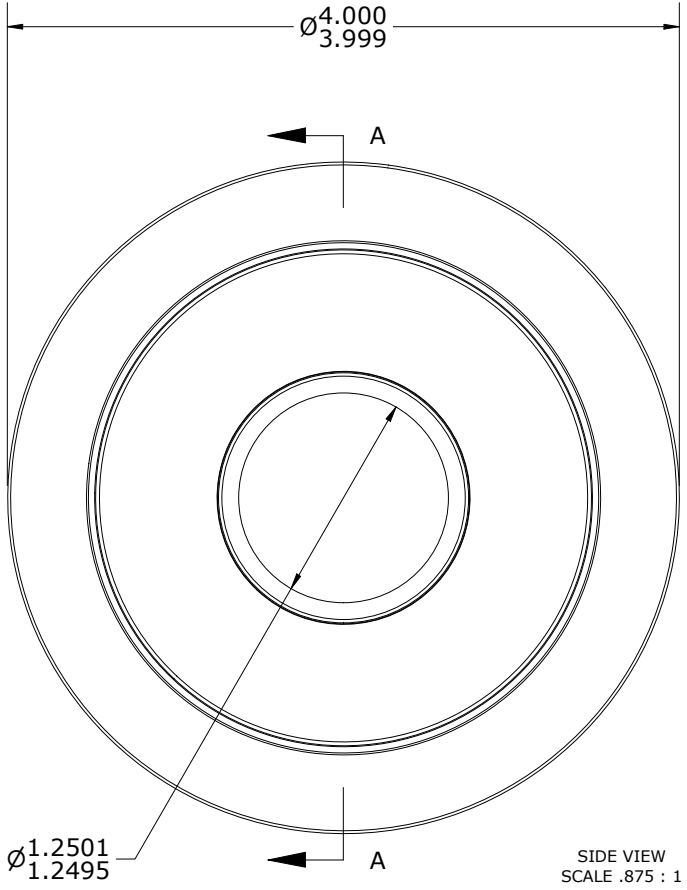
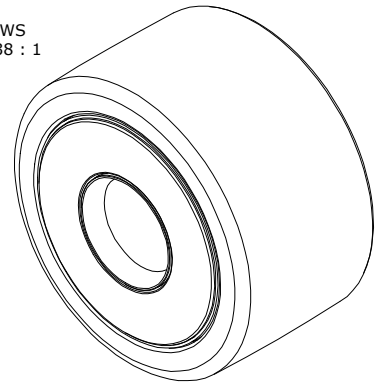


LOAD RATINGS		
RATING	lbf	Newtons
RADIAL BASIC DYNAMIC	29,985	133,380
MAXIMUM STATIC CAPACITY	89,540	398,294

- NOTES:
- BEARING IS PACKED WITH NLGI GRADE 2, LITHIUM BASED GREASE (UNLESS OTHERWISE SPECIFIED)
  - ALL EXPOSED SURFACES AS MOUNTED HAVE BLACK OXIDE
  - LIMITING SPEED:
    - A. GREASE = 700 RPM
  - CUSTOM LASER ETCHING AVAILABLE UPON REQUEST

ISO VIEWS  
SCALE .438 : 1



Recommended Shaft Fits		
Fit Type - Dimension	Ø (Inch)	Ø (mm)
Push - Max	1.2496	31.7398
Push - Min	1.2491	31.7271
Drive - Max	1.2504	31.7602
Drive - Min	1.2499	31.7475
Press - Max	1.2508	31.7703
Press - Min	1.2503	31.7576

MATERIAL NOTES:

- OUTER RING- BEARING STEEL, HEAT TREATED
- INNER RING- BEARING STEEL, ZONE HARDENED
- NEEDLE ROLLER(S) - BEARING STEEL, HEAT TREATED
- WASHER(S) - STEEL, HEAT TREATED
- SEAL(S) - SYNTHETIC

CUSTOMER PART#	XX = ± .01 XXX = ± .005 XXXX = ± .0005 ANGLES = ± 2' INCH [METRIC] FRACTION = ± 1/64
<b>ENGINEERING CHANGE ORDER NOTE</b>	
CARTER STANDARD SURFACE FINISH IS MEASURED IN "Ra" UNITS UNLESS OTHERWISE SPECIFIED.	

CARTER MANUFACTURING IS NOT RESPONSIBLE FOR TYPOGRAPHICAL ERRORS

REVISION	
<b>A</b>	AUTHOR BY JGV
REVISION BY SGW	DATE 8/4/2006

**CARTER MANUFACTURING CO., INC.**  
GRAND HAVEN, MICHIGAN 49417

PART NAME: ASSEMBLY				PRODUCT TYPE: Standard CF/YR	
DRAWN BY JAF	CHK'D BY JGV	SALES KPR	MATERIAL NOTED	DATE 8/4/2006	DATE 8/3/2006
DATE 8/4/2006	DATE 8/4/2006	DATE 8/4/2006	DATE 8/4/2006	DATE 8/3/2006	SHEET 1 OF 2