

LOAD RATINGS		
RATING	lbf	Newtons
RADIAL BASIC DYNAMIC	12,400	55,158
MAXIMUM STATIC CAPACITY	17,200	76,509

- NOTES:
1. BEARING IS PACKED WITH NLGI GRADE 2, LITHIUM BASED GREASE (UNLESS OTHERWISE SPECIFIED)
 2. ALL EXPOSED SURFACES AS MOUNTED HAVE BLACK OXIDE
 3. LIMITING SPEED:
A. GREASE = 4,100 RPM
 4. CUSTOM LASER ETCHING UPON REQUEST

SIGNED DRAWING APPROVAL REQUIRED

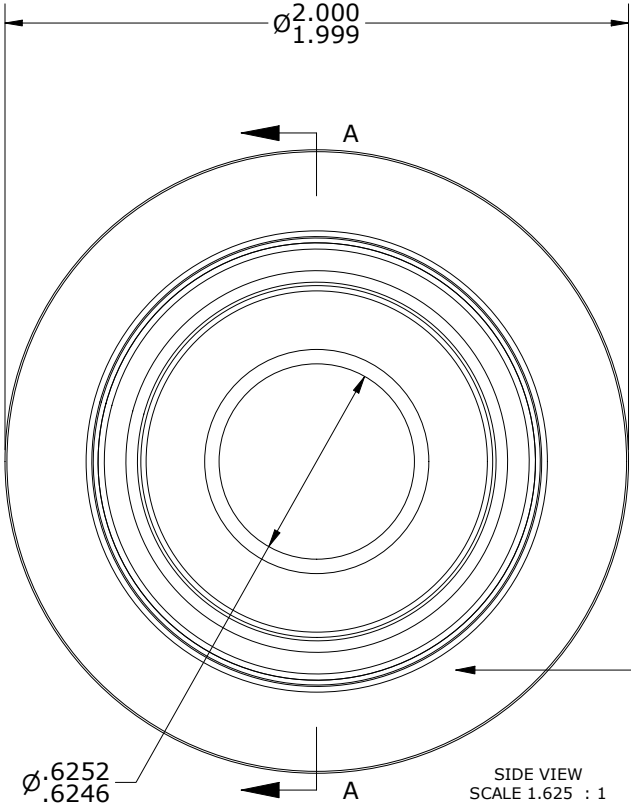
PLEASE REVIEW AND VERIFY INFORMATION ON ALL SHEETS & RETURN COPY WITH SIGNED AND DATED APPROVAL, AND/OR REQUIRED CHANGES. CARTER WILL NOT PROCEED WITH ORDER UNTIL APPROVAL IS RECEIVED

SIGNED _____

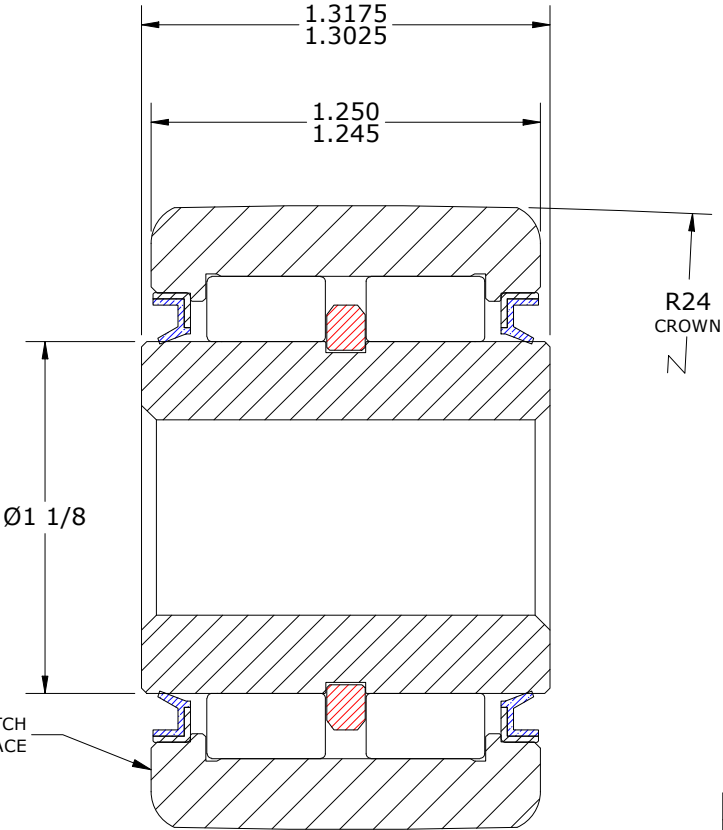
DATE _____

APPROVED ☐

REJECTED ☐

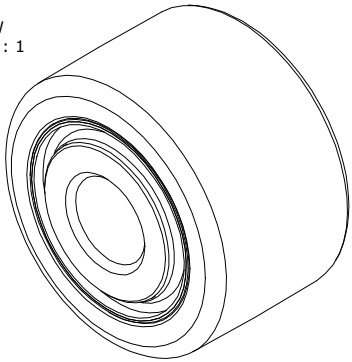


SIDE VIEW
SCALE 1.625 : 1



SECTION A-A
SCALE 1.625 : 1

ISO VIEW
SCALE .813 : 1



Recommended Shaft Fits		
Fit Type - Dimension	Ø (Inch)	Ø (mm)
Transition - Max	.6247	15.8674
Transition - Min	.6243	15.8572
Press - Max	.6257	15.8928
Press - Min	.6253	15.8826

MATERIAL NOTES:

OUTER RING - BEARING STEEL, HEAT TREATED
INNER RING - BEARING STEEL, HEAT TREATED
NEEDLE ROLLER(S) - BEARING STEEL, HEAT TREATED
RETAINING RING - BEARING STEEL, HEAT TREATED
SEAL(S) - VB TYPE OIL SEAL

CUSTOMER PART#

XX = ± .01
XXX = ± .005
XXXX = ± .0005
ANGLES = ± 1'
INCH (METRIC)
FRACTION = ± 1/32

CARTER MANUFACTURING IS
NOT RESPONSIBLE FOR
TYPOGRAPHICAL ERRORS

CARTER MANUFACTURING CO., INC.
GRAND HAVEN, MICHIGAN 49417

ENGINEERING CHANGE ORDER NOTE

REVISION

PART NAME: ASSEMBLY

PRODUCT TYPE: YDR

A

AUTHOR BY
HG

DRAWN BY
SGW

CHK'D BY
MD

SALES
SC

MATERIAL
NOTED

REVISION BY
SGW

DATE
2/21/2020

DATE
2/14/2020

DATE
2/17/2020

DATE
2/21/2020

SHEET
1 OF 2