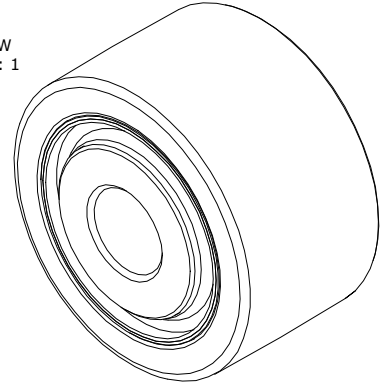


LOAD RATINGS		
RATING	lbf	Newtons
RADIAL BASIC DYNAMIC	8,200	36,475
MAXIMUM STATIC CAPACITY	10,500	46,706

- NOTES:
1. BEARING IS PACKED WITH NLGI GRADE 2, LITHIUM BASED GREASE (UNLESS OTHERWISE SPECIFIED)
 2. ALL EXPOSED SURFACES AS MOUNTED HAVE BLACK OXIDE
 3. LIMITING SPEED:
A. GREASE = 4,700 RPM
 4. CUSTOM LASER ETCHING UPON REQUEST

ISO VIEW
SCALE 1 : 1



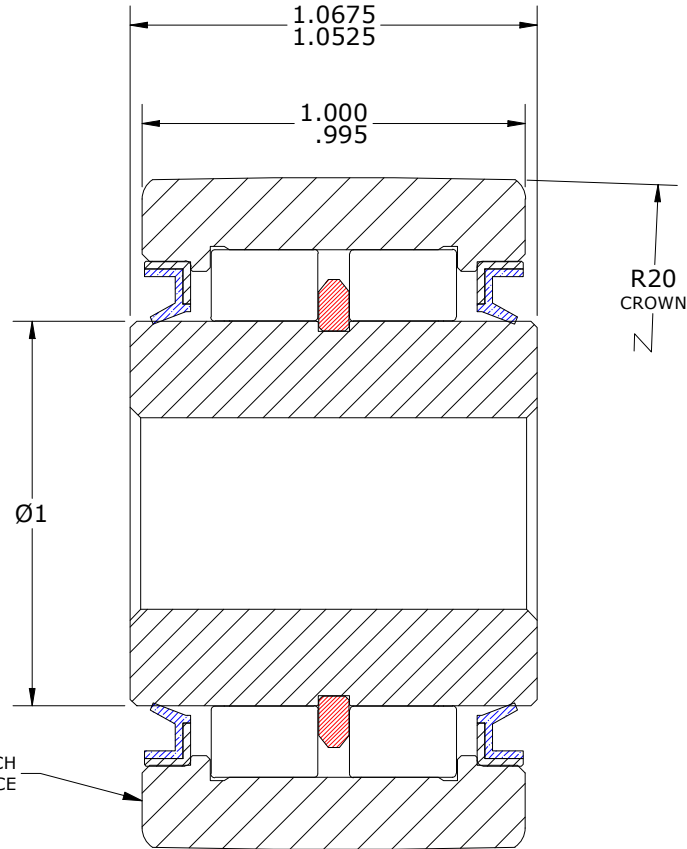
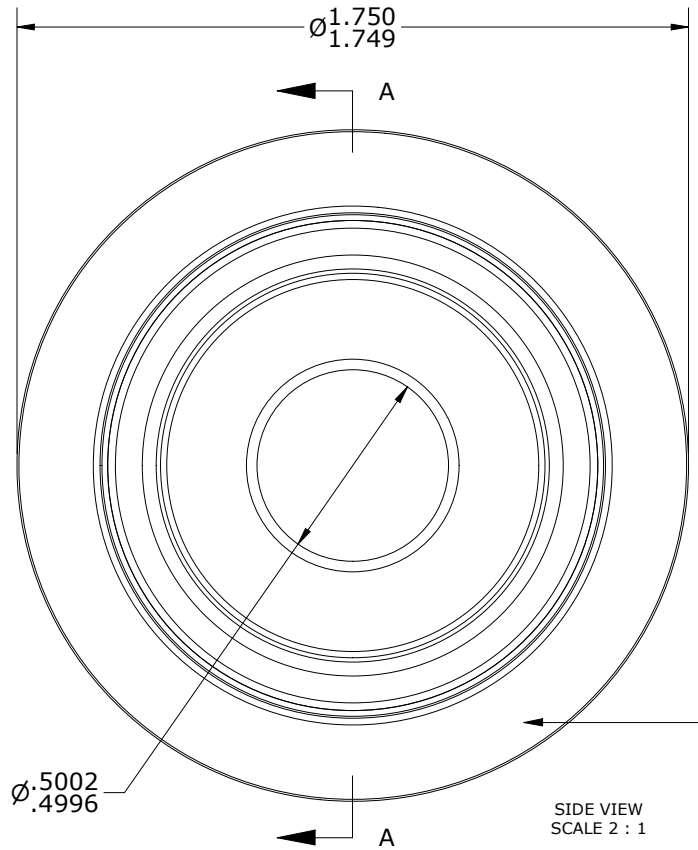
SIGNED DRAWING APPROVAL REQUIRED

PLEASE REVIEW AND VERIFY INFORMATION ON ALL SHEETS & RETURN COPY WITH SIGNED AND DATED APPROVAL, AND/OR REQUIRED CHANGES. CARTER WILL NOT PROCEED WITH ORDER UNTIL APPROVAL IS RECEIVED

SIGNED

DATE

APPROVED REJECTED



Recommended Shaft Fits		
Fit Type - Dimension	Ø (Inch)	Ø (mm)
Transition - Max	.4997	12.6924
Transition - Min	.4993	12.6822
Press - Max	.5007	12.7178
Press - Min	.5003	12.7076

MATERIAL NOTES:

OUTER RING - BEARING STEEL, HEAT TREATED
 INNER RING - BEARING STEEL, HEAT TREATED
 NEEDLE ROLLER(S) - BEARING STEEL, HEAT TREATED
 RETAINING RING - BEARING STEEL, HEAT TREATED
 SEAL(S) - VB TYPE OIL SEAL

CUSTOMER PART# _____

XX = ± .01
 XXX = ± .005
 XXXX = ± .0005
 ANGLES = ± 1'
 INCH [METRIC]
 FRACTION = ± 1/32

ENGINEERING CHANGE ORDER NOTE

CARTER MANUFACTURING IS NOT RESPONSIBLE FOR TYPOGRAPHICAL ERRORS

CARTER MANUFACTURING CO., INC.
 GRAND HAVEN, MICHIGAN 49417

REVISION		PART NAME: ASSEMBLY		PRODUCT TYPE: YDR	
A	AUTHOR BY	DRAWN BY	CHK'D BY	SALES	MATERIAL
	HG	SGW	MD	SC	NOTED
REVISION BY	DATE	DATE	DATE	DATE	SHEET
SGW	2/6/2020	2/4/2020	2/6/2020	2/6/2020	1 OF 2