

LOAD RATINGS		
RATING	lbf	Newtons
RADIAL BASIC DYNAMIC	6,200	27,579
MAXIMUM STATIC CAPACITY	7,000	31,138

- NOTES:
1. BEARING IS PACKED WITH NLGI GRADE 2, LITHIUM BASED GREASE (UNLESS OTHERWISE SPECIFIED)
  2. ALL EXPOSED SURFACES AS MOUNTED HAVE BLACK OXIDE
  3. LIMITING SPEED:  
A. GREASE = 6,200 RPM
  4. CUSTOM LASER ETCHING UPON REQUEST

**SIGNED DRAWING APPROVAL REQUIRED**

PLEASE REVIEW AND VERIFY INFORMATION ON ALL SHEETS & RETURN COPY WITH SIGNED AND DATED APPROVAL, AND/OR REQUIRED CHANGES. CARTER WILL NOT PROCEED WITH ORDER UNTIL APPROVAL IS RECEIVED

SIGNED \_\_\_\_\_

DATE \_\_\_\_\_

APPROVED ☐

REJECTED ☐

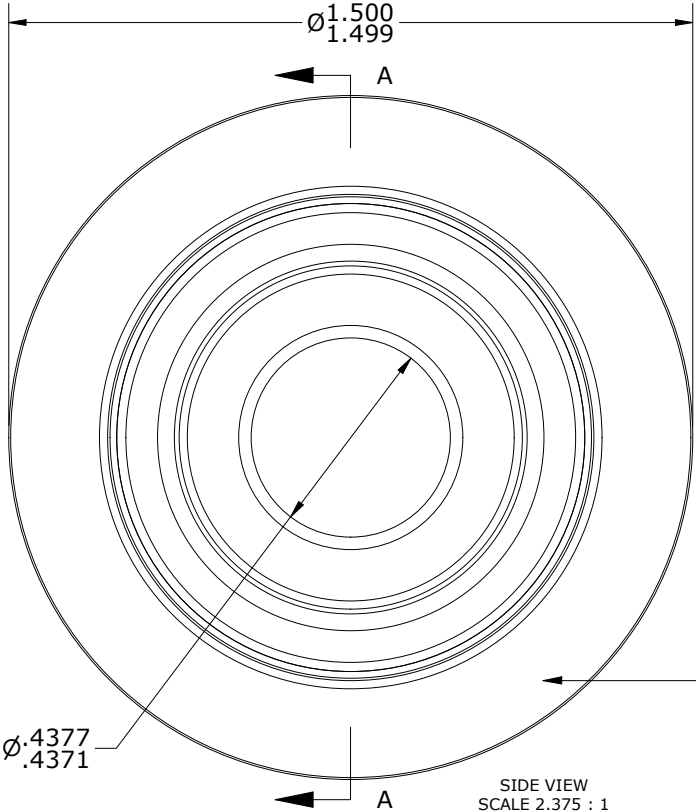
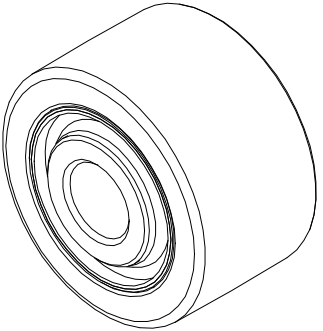
MS NO.

NSN NO.

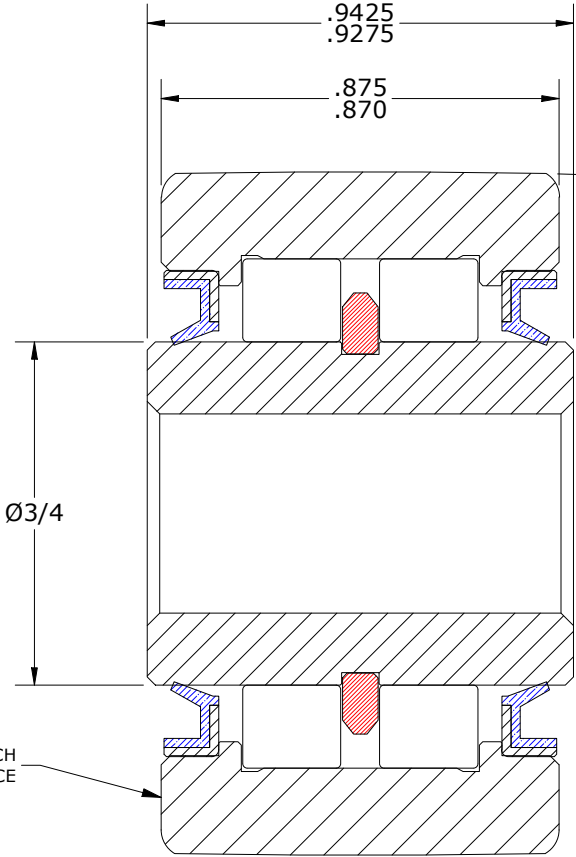
DRAWING NO.

CYDR-150-S

ISO VIEW  
SCALE 1 : 1



SIDE VIEW  
SCALE 2.375 : 1



Ø3/4

SECTION A-A  
SCALE 2.375 : 1

R20  
CROWN  
N

LASER ETCH  
THIS FACE

Recommended Shaft Fits

Fit Type - Dimension	Ø (Inch)	Ø (mm)
Transition - Max	.4372	11.1049
Transition - Min	.4368	11.0947
Press - Max	.4380	11.1252
Press - Min	.4376	11.1150

MATERIAL NOTES:

OUTER RING - BEARING STEEL, HEAT TREATED  
INNER RING - BEARING STEEL, HEAT TREATED  
NEEDLE ROLLER(S) - BEARING STEEL, HEAT TREATED  
RETAINING RING - BEARING STEEL, HEAT TREATED  
SEAL(S) - VB TYPE OIL SEAL

CUSTOMER PART#

XX = ± .01  
XXX = ± .005  
XXXX = ± .0005  
ANGLES = ± 1'  
INCH (METRIC)  
FRACTION = ± 1/32

**ENGINEERING CHANGE ORDER NOTE**

CARTER MANUFACTURING IS  
NOT RESPONSIBLE FOR  
TYPOGRAPHICAL ERRORS

REVISION

A

AUTHOR BY  
HG

REVISION BY  
SGW

DATE  
2/21/2020

**CARTER MANUFACTURING CO., INC.**

GRAND HAVEN, MICHIGAN 49417

PART NAME: ASSEMBLY

PRODUCT TYPE: YDR

DRAWN BY  
SGW

CHK'D BY  
MD

DATE  
2/13/2020

DATE  
2/17/2020

SALES  
SC

DATE  
2/21/2020

MATERIAL  
NOTED

SHEET  
1 OF 2