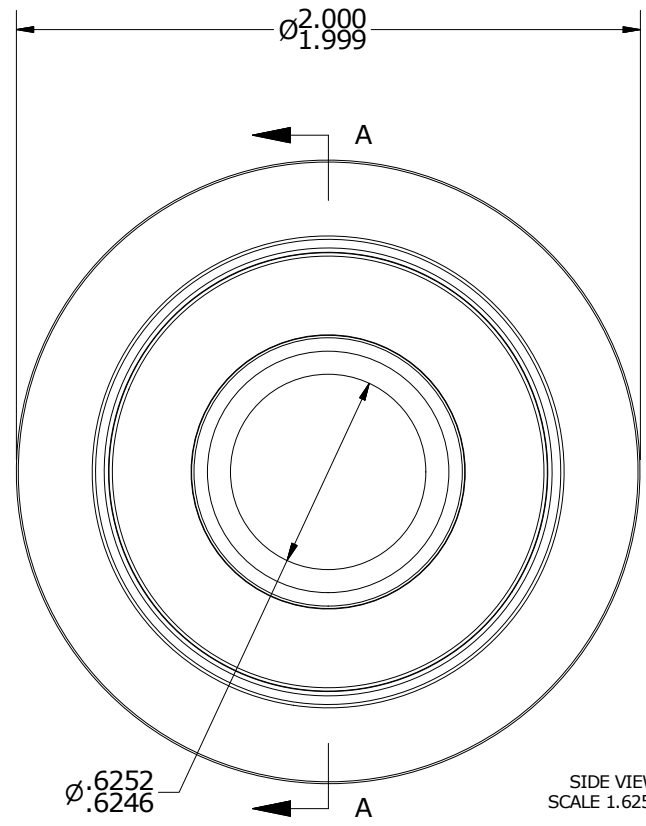
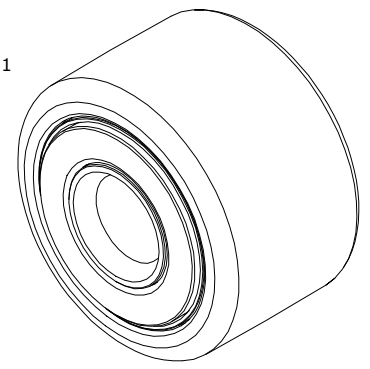


LOAD RATINGS		
RATING	lbf	Newtons
RADIAL BASIC DYNAMIC	6,472	28,789
MAXIMUM STATIC CAPACITY	16,912	75,228

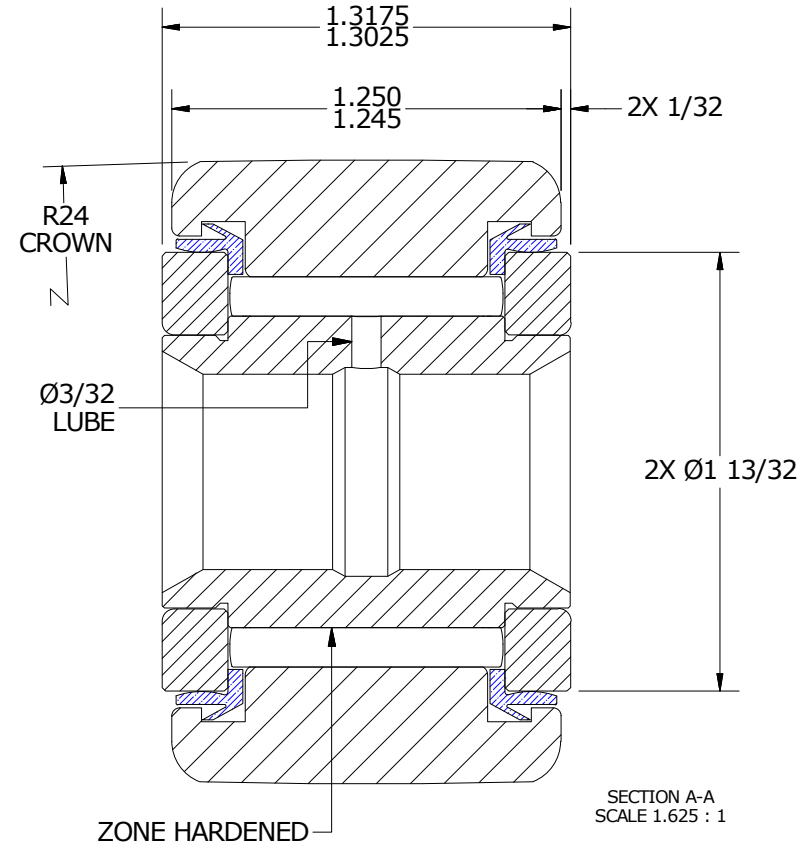
NOTES:
 1. BEARING IS PACKED WITH NLGI GRADE 2, FOOD GRADE H1 GREASE (UNLESS OTHERWISE SPECIFIED)

MS NO. _____ NSN NO. _____ DRAWING NO. CSY-64-S

ISO VIEW
SCALE .813 : 1



SIDE VIEW
SCALE 1.625 : 1



SECTION A-A
SCALE 1.625 : 1

Recommended Shaft Fits		
Fit Type - Dimension	\varnothing (Inch)	\varnothing (mm)
Push - Max	.6247	15.8674
Push - Min	.6243	15.8572
Drive - Max	.6253	15.8826
Drive - Min	.6249	15.8725
Press - Max	.6257	15.8928
Press - Min	.6253	15.8826

MATERIAL NOTES:
 OUTER RING - 440C STAINLESS STEEL, HEAT TREATED
 INNER RING - 440C STAINLESS STEEL, ZONE HARDENED
 NEEDLE ROLLER(S) - 440C STAINLESS STEEL, HEAT TREATED
 WASHER(S) - 440C STAINLESS STEEL, HEAT TREATED
 SEAL(S) - SYNTHETIC

CUSTOMER PART# _____
 XX = $\pm .01$
 XXX = $\pm .005$
 XXXX = $\pm .0005$
 ANGLES = $\pm 1'$
 INCH [METRIC]
 FRACTION = $\pm 1/32$

CARTER MANUFACTURING IS NOT RESPONSIBLE FOR TYPOGRAPHICAL ERRORS

CARTER MANUFACTURING CO., INC.
 GRAND HAVEN, MICHIGAN 49417

ENGINEERING CHANGE ORDER NOTE

B

REVISION BY: JLB
 DATE: 8/9/2018

REVISION

AUTHOR BY: HG
 DATE: 8/9/2018

PART NAME: ASSEMBLY
 PRODUCT TYPE: CNB / SY

SALES	MATERIAL
KR	NOTED
DATE	SHEET
8/8/2018	1 OF 2