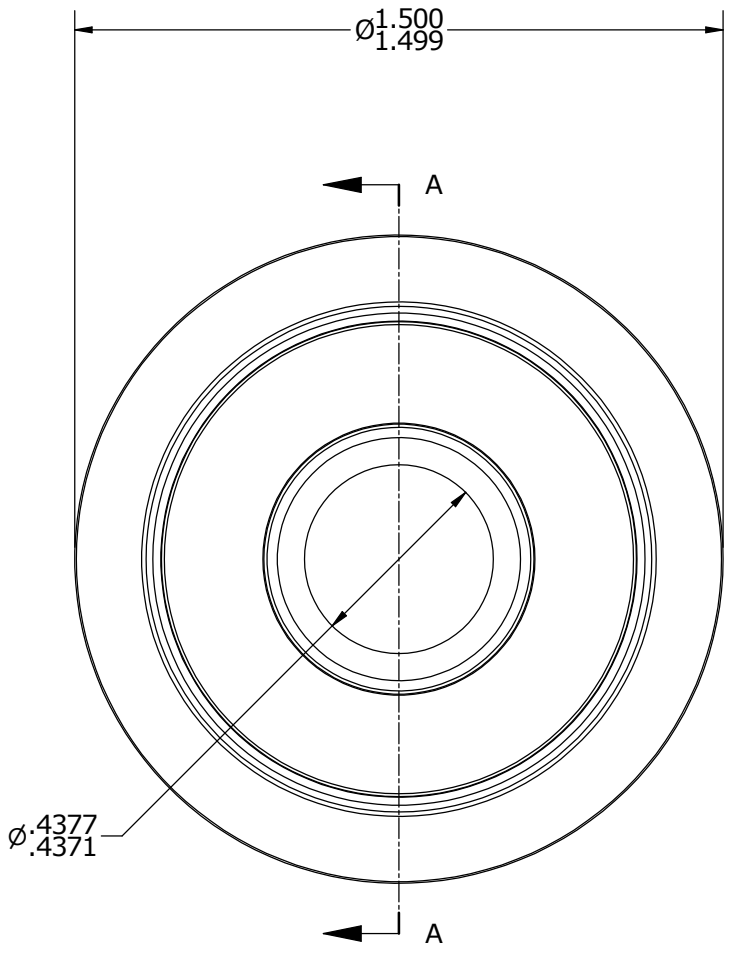
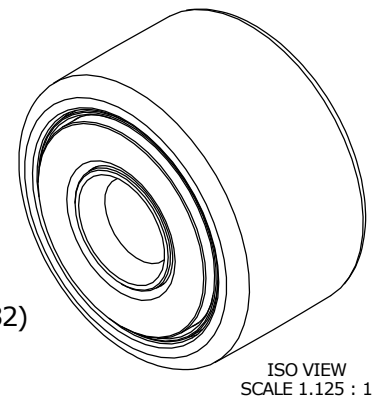
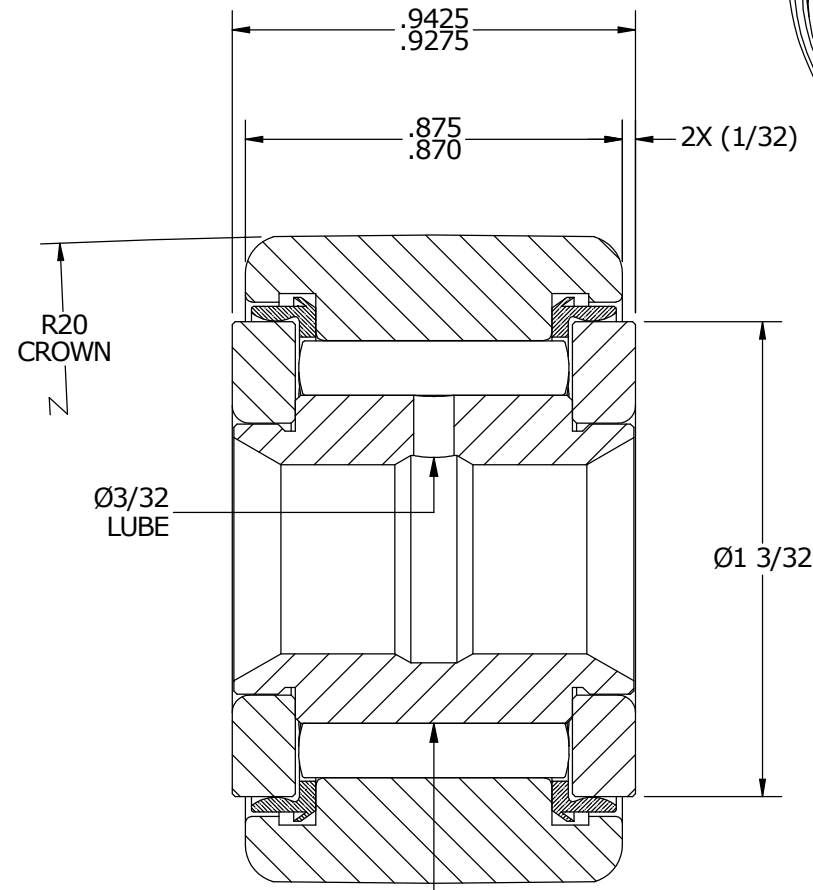


LOAD RATINGS	
RATING	Lbs
RADIAL BASIC DYNAMIC	4,350
MAXIMUM STATIC CAPACITY	11,200

NOTES:
 1. BEARING COMES PACKED WITH CARTER STANDARD FOOD GRADE H1, NLGI 2 GREASE



END VIEW
SCALE 2.25 : 1



SECTION A-A
SCALE 2.25 : 1

MATERIAL NOTES:
 OUTER RACE - 440C STAINLESS STEEL, HEAT TREATED
 INNER RACE - 440C STAINLESS STEEL, ZONE HARDENED
 WASHERS - 440C STAINLESS STEEL, HEAT TREATED
 NEEDLE ROLLERS - 440C STAINLESS STEEL, HEAT TREATED
 SEALS - SYNTHETIC

CUSTOMER PART#	XX = ± .01 XXX = ± .005 XXXX = ± .0005 ANGLES = ± 1' INCH [METRIC] FRACTION = ± 1/32
<i>ENGINEERING CHANGE ORDER NOTE</i>	

CARTER MANUFACTURING IS NOT RESPONSIBLE FOR TYPOGRAPHICAL ERRORS	
<i>REVISION</i>	
C	AUTHOR BY HG
REVISION BY MD	DATE 6/3/2015

CARTER MANUFACTURING CO., INC. GRAND HAVEN, MICHIGAN 49417					
PART NAME: ASSEMBLY					
DRAWN BY JAF	CHK'D BY SGW	SALES KPR	MATERIAL NOTED		
DATE 8/8/2006	DATE 6/2/2015	DATE 8/7/2006	SHEET 1 OF 2		