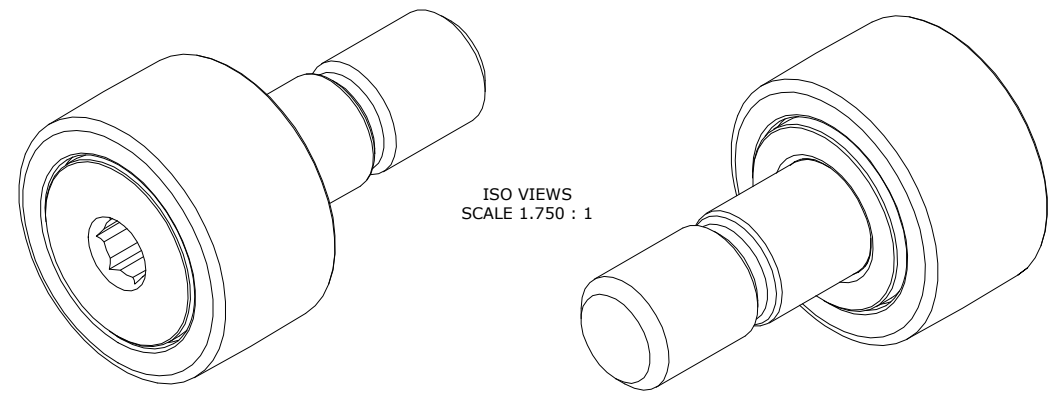


RECOMMENDED MOUNTING HOLE Ø		
Limit	Inch	mm
MIN	.3750	9.5250
MAX	.3755	9.5377

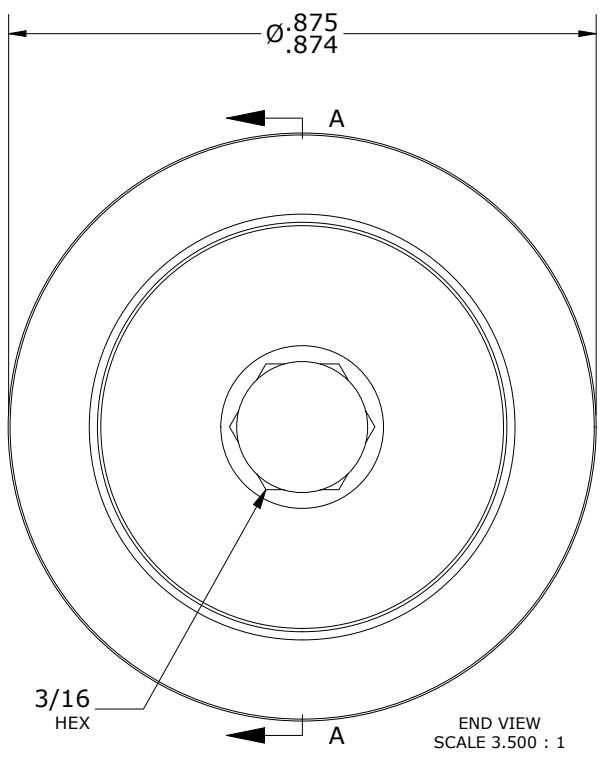
- NOTES:
- BUSHING IS IMPREGNATED WITH CARTER STANDARD NEVERLUBE LUBRICANT.
 - ALL EXPOSED SURFACES HAVE BLACK OXIDE.
 - CUSTOM LASER ETCHING IS AVAILABLE UPON REQUEST.

MS NO.	NSN NO.	DRAWING NO.	CSFH-28-A
--------	---------	-------------	-----------

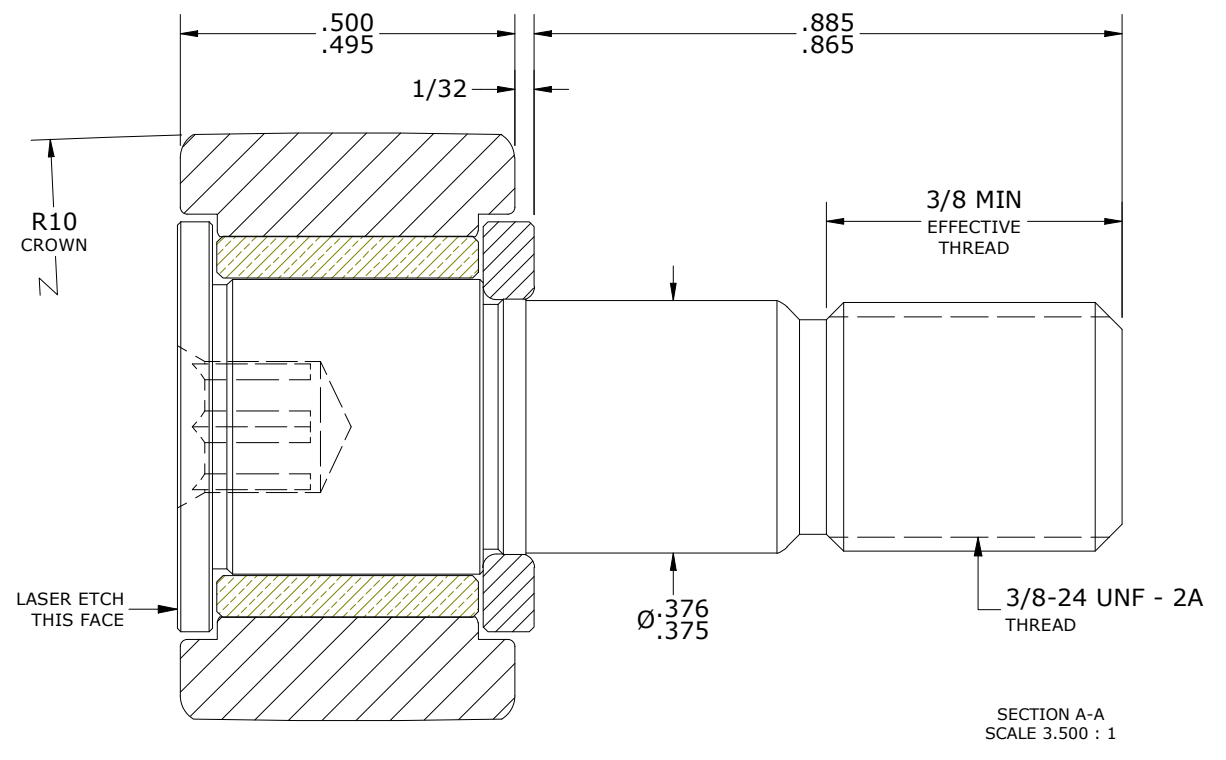
MAXIMUM CLAMPING TORQUE**	
Inch lbf	Nm
47.5	5.5



ISO VIEWS
SCALE 1.750 : 1



END VIEW
SCALE 3.500 : 1



SECTION A-A
SCALE 3.500 : 1

**TORQUE SPECIFICATION IS BASED ON LUBRICATED THREADS, IF USING DRY THREADS DOUBLE TORQUE VALUE

MATERIAL NOTES:
 OUTER RING - BEARING STEEL, HEAT TREATED
 STUD - STEEL
 WASHER - BEARING STEEL, HEAT TREATED
 BUSHING - SINTERED BRONZE
 SEAL(S) - SYNTHETIC

CUSTOMER PART#	XX = ± .01 XXX = ± .005 XXXX = ± .0005 ANGLES = ± 1' INCH [METRIC] FRACTION = ± 1/32
ENGINEERING CHANGE ORDER NOTE	

CARTER MANUFACTURING IS NOT RESPONSIBLE FOR TYPOGRAPHICAL ERRORS

CARTER MANUFACTURING CO., INC.
 GRAND HAVEN, MICHIGAN 49417

REVISION		PART NAME: ASSEMBLY		PRODUCT TYPE: SFH	
D	AUTHOR BY HG	DRAWN BY GJP	CHK'D BY MD	SALES NC	MATERIAL NOTED
REVISION BY SGW	DATE 2/11/2022	DATE 9/7/2000	DATE 2/10/2022	DATE 2/11/2022	SHEET 1 OF 2