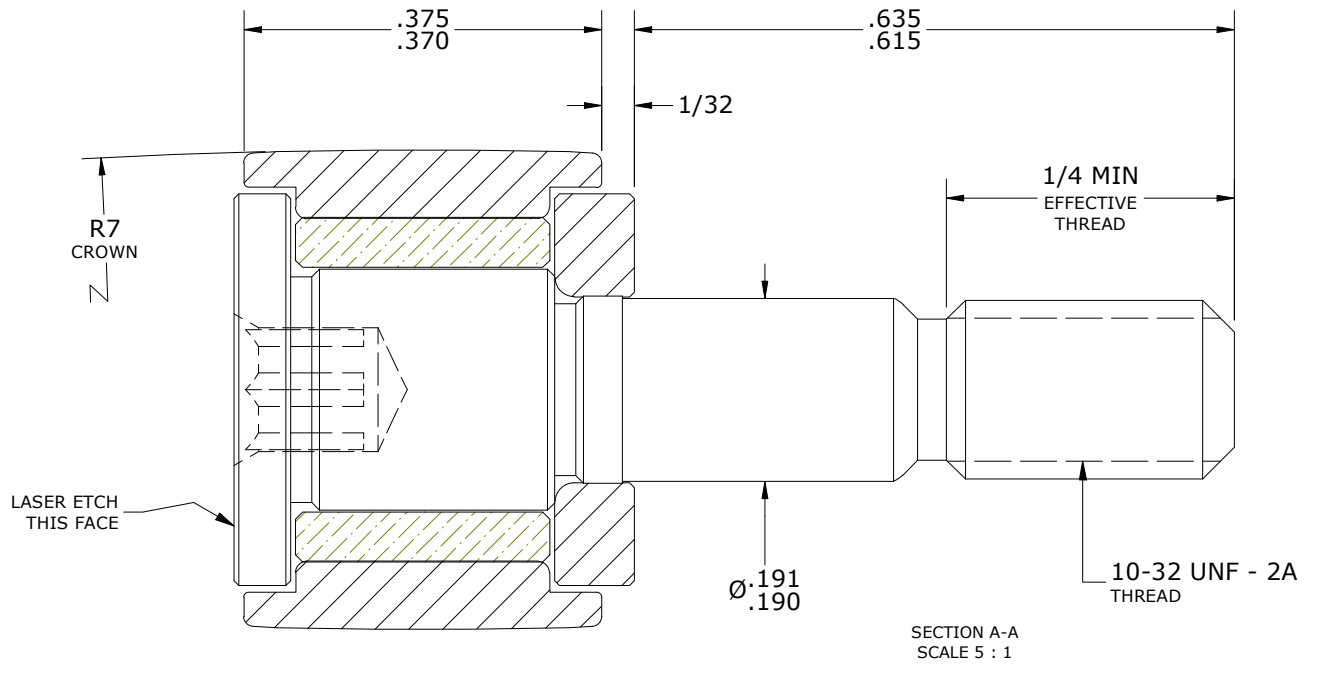
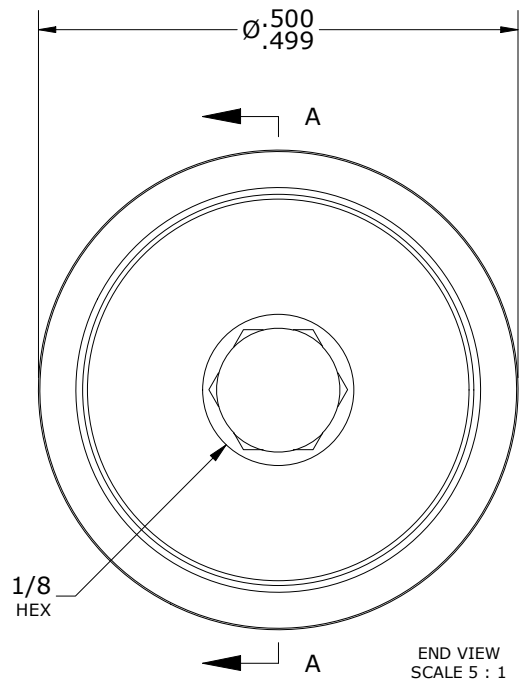
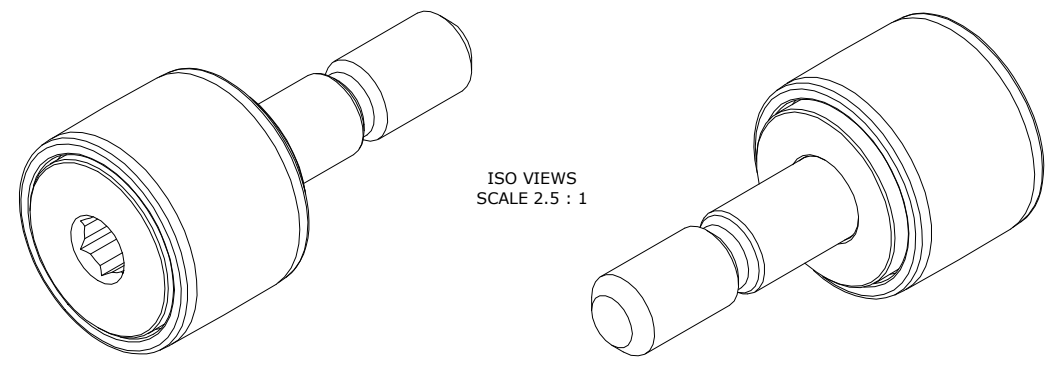


RECOMMENDED MOUNTING HOLE Ø		
Limit	Inch	mm
MIN	.1900	4.8260
MAX	.1905	4.8387

MAXIMUM CLAMPING TORQUE**	
Inch lbf	Nm
7.5	.85

- NOTES:
- BUSHING IS IMPREGNATED WITH CARTER STANDARD NEVERLUBE LUBRICANT.
  - ALL EXPOSED SURFACES HAVE BLACK OXIDE.
  - CUSTOM LASER ETCHING IS AVAILABLE UPON REQUEST.

MS NO. \_\_\_\_\_ NSN NO. \_\_\_\_\_ DRAWING NO. CSFH-16-A



\*\*TORQUE SPECIFICATION IS BASED ON LUBRICATED THREADS, IF USING DRY THREADS DOUBLE TORQUE VALUE.

MATERIAL NOTES:  
 OUTER RING - BEARING STEEL, HEAT TREATED  
 STUD - STEEL  
 WASHER - BEARING STEEL, HEAT TREATED  
 BUSHING - SINTERED BRONZE

CUSTOMER PART#	XX = ± .01 XXX = ± .005 XXXX = ± .0005 ANGLES = ± 1' INCH [METRIC] FRACTION = ± 1/32
<b>ENGINEERING CHANGE ORDER NOTE</b>	

CARTER MANUFACTURING IS NOT RESPONSIBLE FOR TYPOGRAPHICAL ERRORS				<b>CARTER MANUFACTURING CO., INC.</b> GRAND HAVEN, MICHIGAN 49417			
<b>REVISION</b>				PART NAME: ASSEMBLY		PRODUCT TYPE: CSFH	
<b>B</b>	AUTHOR BY HG	DRAWN BY SGW	CHK'D BY MD	SALES NC	MATERIAL NOTED		
REVISION BY SGW	DATE 4/21/2020	DATE 4/21/2020	DATE 4/21/2020	DATE 4/21/2020	SHEET 1 OF 2		