

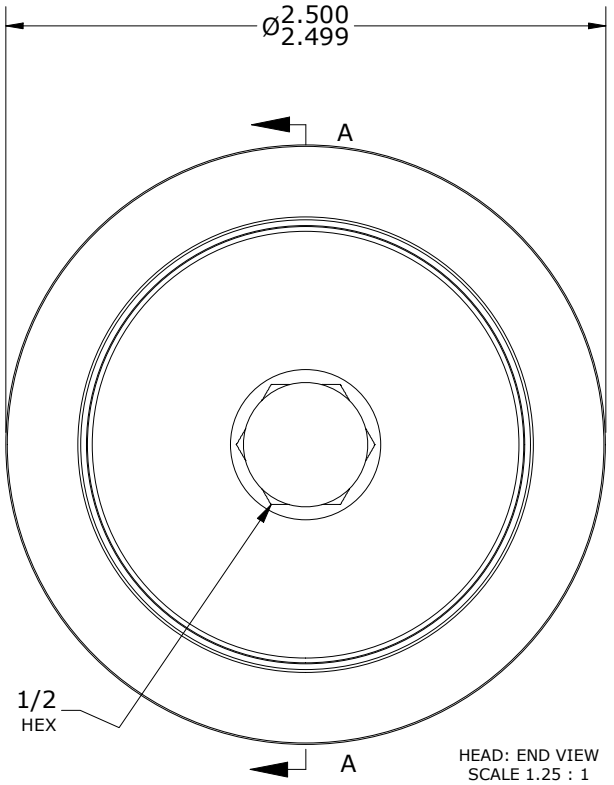
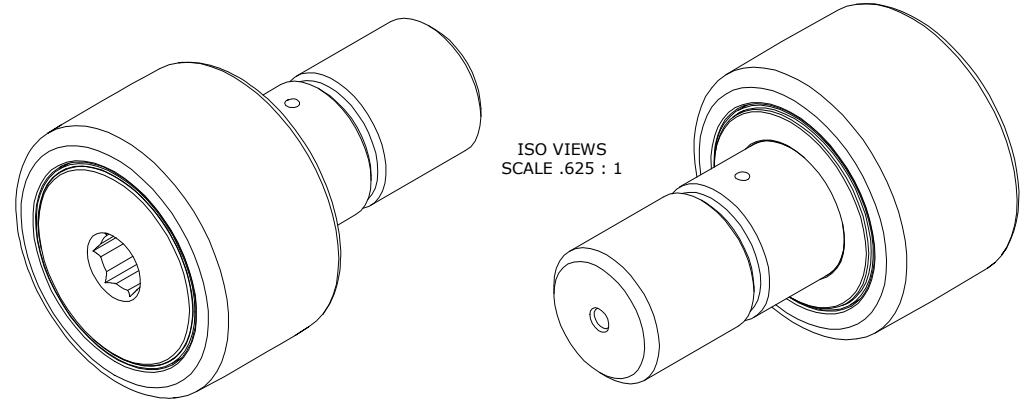
LOAD RATINGS		
RATING	lbf	Newtons
RADIAL BASIC DYNAMIC	10,532	46,849
MAXIMUM STATIC CAPACITY	21,379	95,099

RECOMMENDED MOUNTING HOLE Ø		
Limit	Inch	mm
MIN	1.2500	31.7500
MAX	1.2505	31.7627

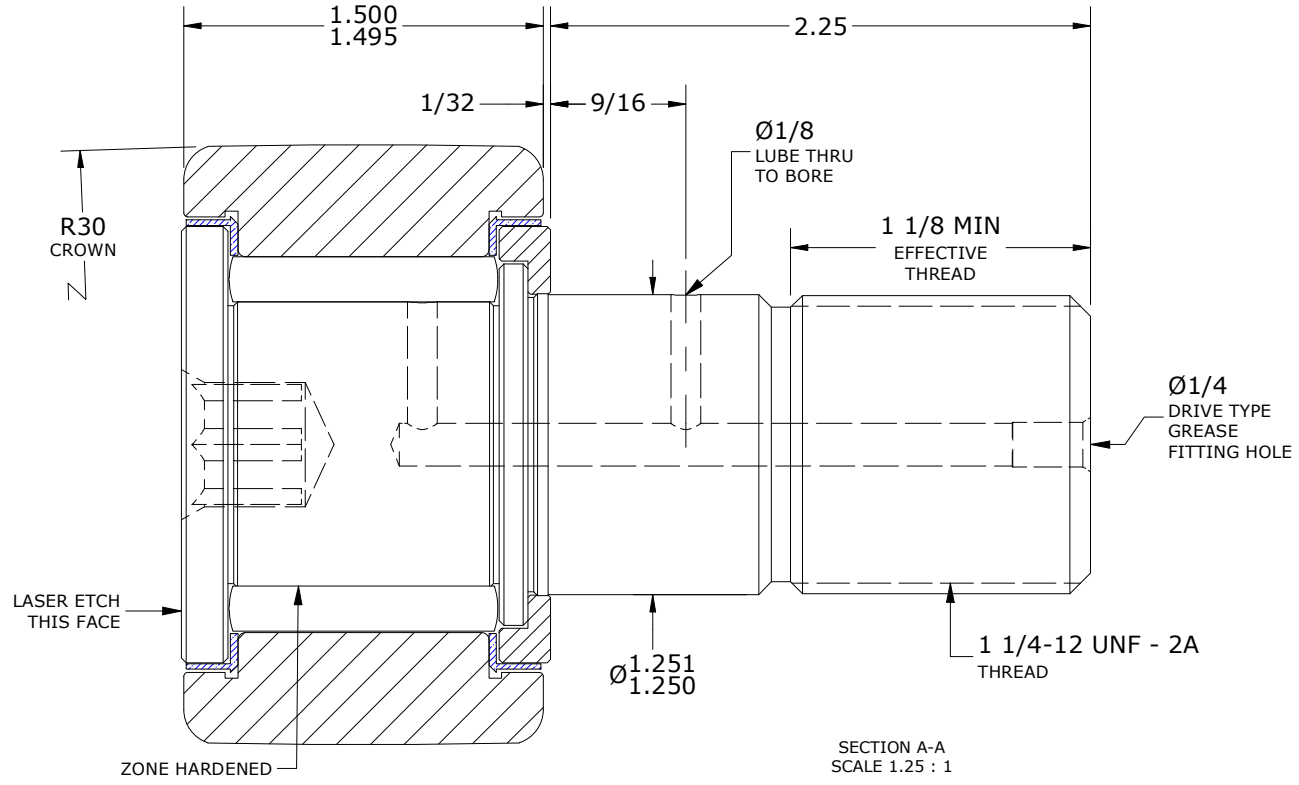
MAXIMUM CLAMPING TORQUE**	
Inch lbf	Nm
1,725	195

- NOTES:
- BEARING COMES PACKED WITH CARTER STANDARD FOOD GRADE H1, NLGI 2 GREASE
 - LIMITING SPEED:
 - A. GREASE = 1,050 RPM
 - CUSTOM LASER ETCHING AVAILABLE UPON REQUEST

MS NO. _____ NSN NO. _____ DRAWING NO. _____



HEAD: END VIEW
SCALE 1.25 : 1



SECTION A-A
SCALE 1.25 : 1

**TORQUE SPECIFICATION IS BASED ON LUBRICATED THREADS, IF USING DRY THREADS DOUBLE TORQUE VALUE

MATERIAL NOTES:

OUTER RING - 440C STAINLESS STEEL, HEAT TREATED
 STUD - 440C STAINLESS STEEL, ZONE HARDENED
 WASHER - 440C STAINLESS STEEL, HEAT TREATED
 NEEDLE ROLLER(S) - 440C STAINLESS STEEL, HEAT TREATED
 SEAL(S) - SYNTHETIC

CUSTOMER PART#	XX = ± .01 XXX = ± .005 XXXX = ± .0005 ANGLES = ± 1' INCH [METRIC] FRACTION = ± 1/64
ENGINEERING CHANGE ORDER NOTE	

CARTER MANUFACTURING IS NOT RESPONSIBLE FOR TYPOGRAPHICAL ERRORS				CARTER MANUFACTURING CO., INC. GRAND HAVEN, MICHIGAN 49417	
REVISION		PART NAME: ASSEMBLY		PRODUCT TYPE: SC	
B	AUTHOR BY HG	DRAWN BY SGW	CHK'D BY MD	SALES NC	MATERIAL NOTED
REVISION BY SGW	DATE 3/14/2022	DATE 3/11/2010	DATE 3/14/2022	DATE 3/14/2022	SHEET 1 OF 2