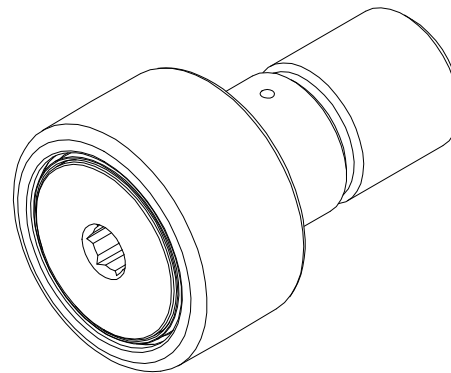


LOAD RATINGS		
RATING	lbf	Newtons
RADIAL BASIC DYNAMIC	5,108	22,722
MAXIMUM STATIC CAPACITY	11,088	49,322

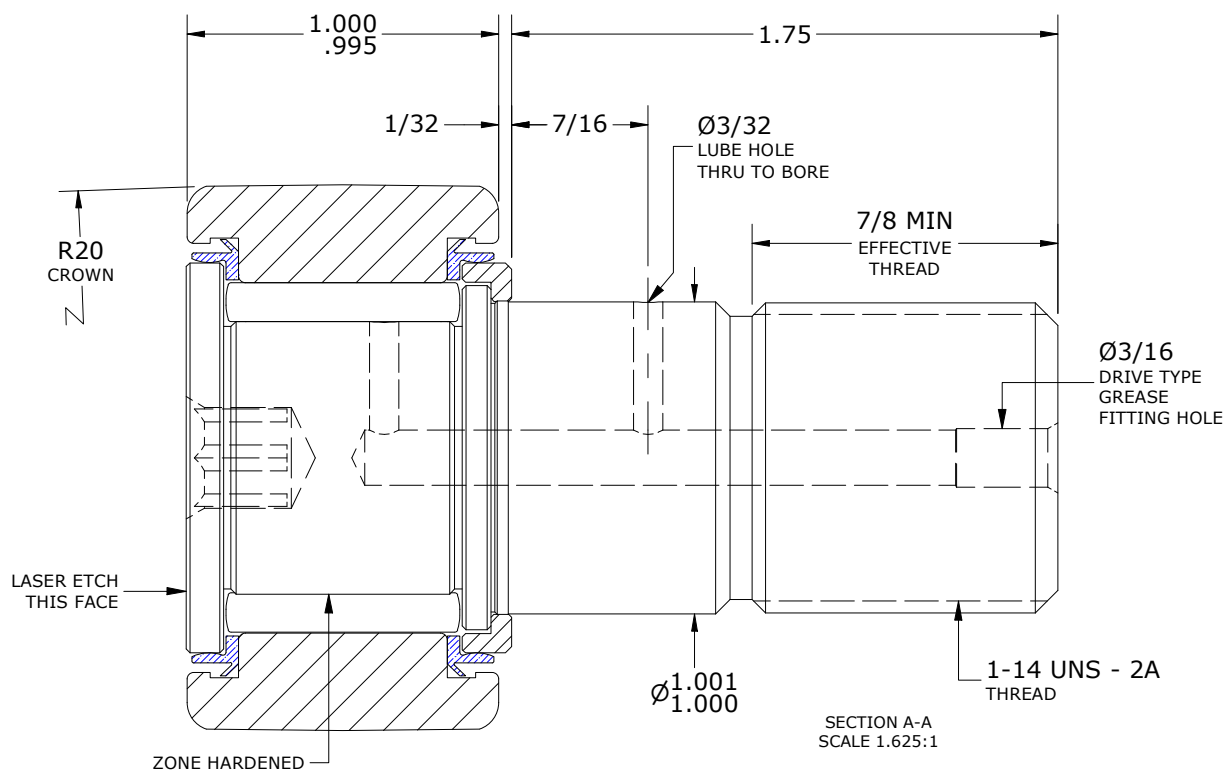
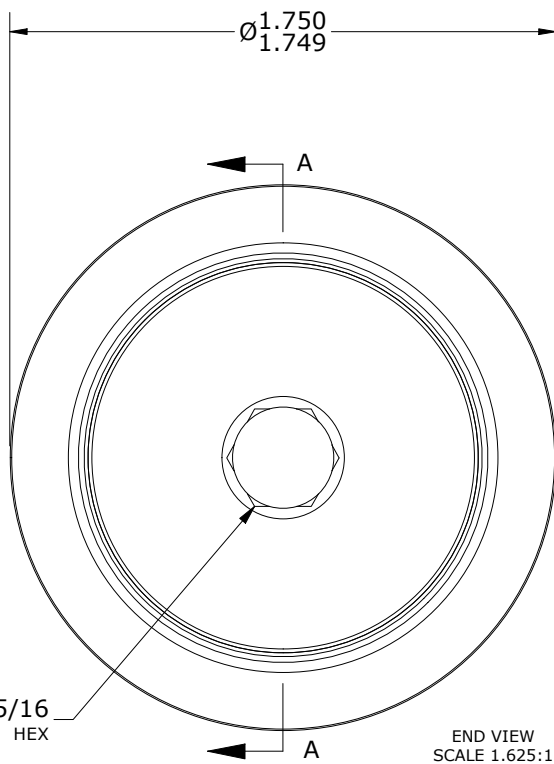
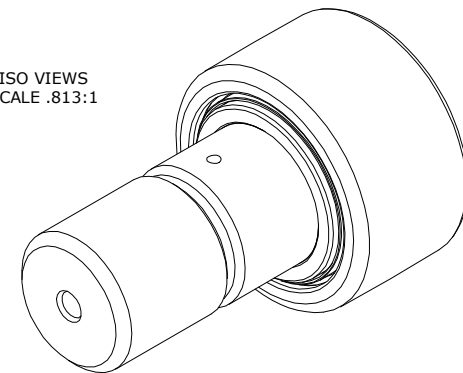
- NOTES:
- BEARING IS PACKED WITH NLGI GRADE 2, FOOD GRADE H1 GREASE (UNLESS OTHERWISE SPECIFIED).
 - LIMITING SPEED:
 - GREASE = 2,200 RPM
 - CUSTOM LASER ETCHING IS AVAILABLE UPON REQUEST

RECOMMENDED MOUNTING HOLE Ø		
Limit	Inch	mm
MIN	1.0000	25.4000
MAX	1.0005	25.4127

MAXIMUM CLAMPING TORQUE*	
Inch lbf	Nm
1,125	127



ISO VIEWS
SCALE .813:1



*TORQUE SPECIFICATION IS BASED ON LUBRICATED THREADS, IF USING DRY THREADS DOUBLE TORQUE VALUE.

MATERIAL NOTES:

- OUTER RING - 440C STAINLESS STEEL, HEAT TREATED
- STUD - 440C STAINLESS STEEL, ZONE HARDENED
- WASHER - 440C STAINLESS STEEL, HEAT TREATED
- NEEDLE ROLLER(S) - 440C STAINLESS STEEL, HEAT TREATED
- SEAL(S) - SYNTHETIC

CUSTOMER PART#	XX = ± .01 XXX = ± .005 XXXX = ± .0005 ANGLES = ± 1' INCH [METRIC] FRACTION = ± 1/32
ENGINEERING CHANGE ORDER NOTE	

CARTER MANUFACTURING IS NOT RESPONSIBLE FOR TYPOGRAPHICAL ERRORS

CARTER MANUFACTURING CO., INC.
GRAND HAVEN, MICHIGAN 49417

REVISION		PART NAME: ASSEMBLY			PRODUCT TYPE: Xtenda™	
B	AUTHOR BY HG	DRAWN BY JAF	CHK'D BY MD	SALES NC	MATERIAL NOTED	
REVISION BY SGW	DATE 6/29/2022	DATE 7/25/2006	DATE 6/29/2022	DATE 6/29/2022	SHEET 1 OF 2	