

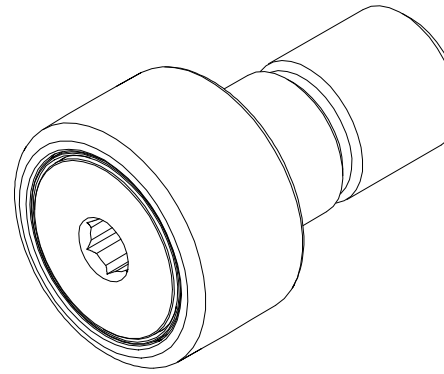
LOAD RATINGS	
RATING	Lbs
BASIC DYNAMIC	3,872
MAXIMUM STATIC	7,896

NOTES:

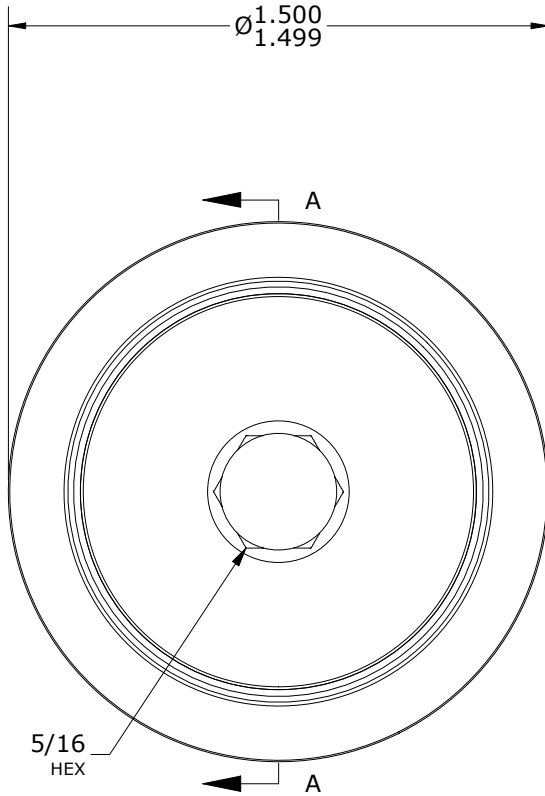
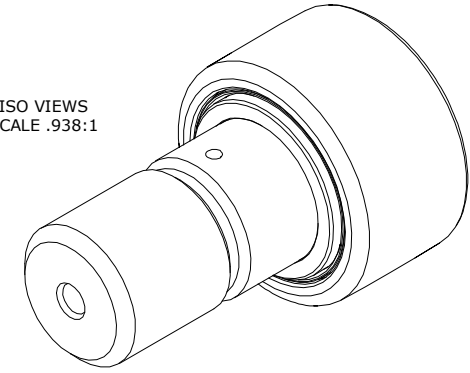
- BEARING IS PACKED WITH NLGI GRADE 2, H1, FOOD GREASE (UNLESS OTHERWISE SPECIFIED)
- CUSTOM LASER ETCHING AVAILABLE UPON REQUEST
- LIMITING SPEED:
  - A. GREASE = 2,500 RPM

RECOMMENDED MOUNTING HOLE Ø		
Limit	Inch	mm
MIN	.8750	22.2250
MAX	.8755	22.2377

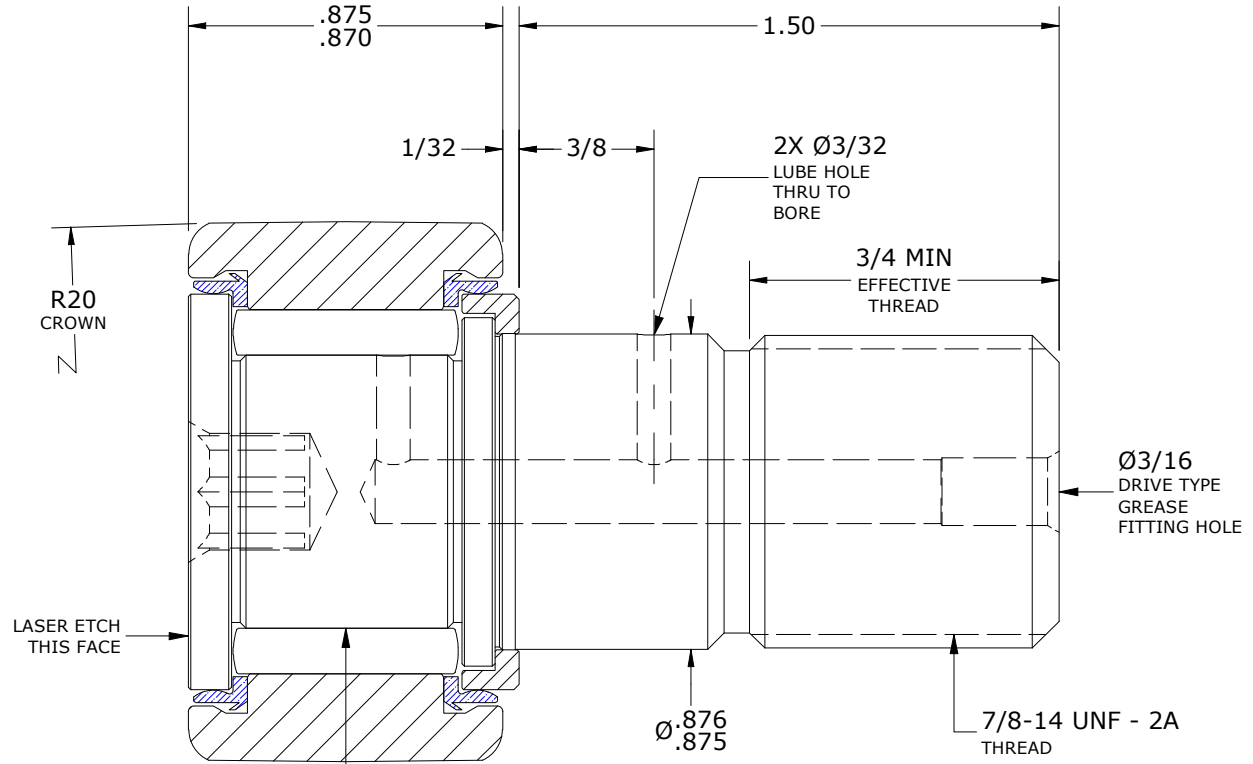
MAXIMUM CLAMPING TORQUE**		
Thread Type	Inch Lbs	Nm
LUBRICATED	750	84.7



ISO VIEWS  
SCALE .938:1



HEAD: END VIEW  
SCALE 1.875



SECTION A-A  
SCALE 1.875

\*\*TORQUE SPECIFICATION IS BASED ON LUBRICATED THREADS, IF USING DRY THREADS DOUBLE TORQUE VALUE

MATERIAL NOTES:

- OUTER RING - 440C STAINLESS STEEL, HEAT TREATED
- STUD - 440C STAINLESS STEEL, ZONE HARDENED
- NEEDLE ROLLER(S) - 440C STAINLESS STEEL, HEAT TREATED
- WASHER - 440C STAINLESS STEEL, HEAT TREATED
- ECCENTRIC SLEEVE - 300 SERIES STAINLESS STEEL
- SEAL(S) - SYNTHETIC

CUSTOMER PART#

XX = ± .01  
 XXX = ± .005  
 XXXX = ± .0005  
 ANGLES = ± 2'  
 INCH [METRIC]  
 FRACTION = ± 1/64

CARTER MANUFACTURING IS NOT RESPONSIBLE FOR TYPOGRAPHICAL ERRORS

**CARTER MANUFACTURING CO., INC.**

GRAND HAVEN, MICHIGAN 49417

ENGINEERING CHANGE ORDER NOTE

REVISION

PART NAME: Assembly

PRODUCT TYPE: Xtenda™

C

AUTHOR BY

DRAWN BY

CHK'D BY

SALES

MATERIAL

HG

JAF

MD

NC

NOTED

REVISION BY

DATE

DATE

DATE

DATE

SHEET

SGW

6/29/2022

7/25/2006

6/29/2022

6/29/2022

1 OF 2