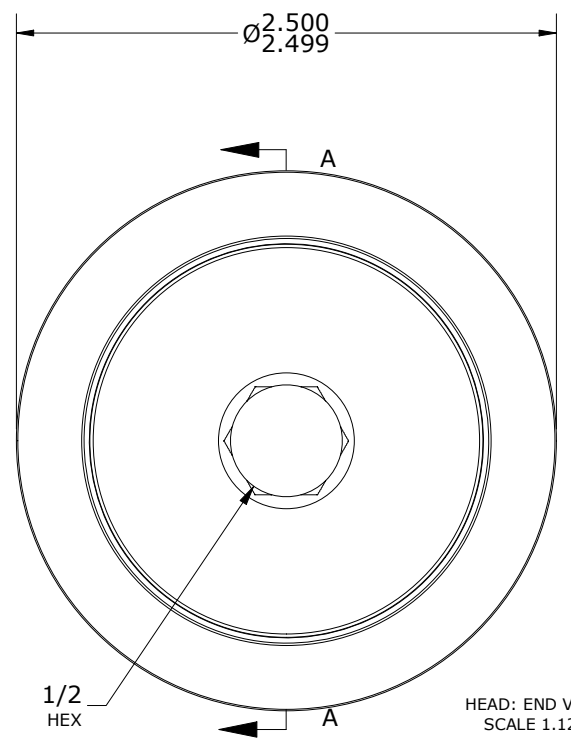
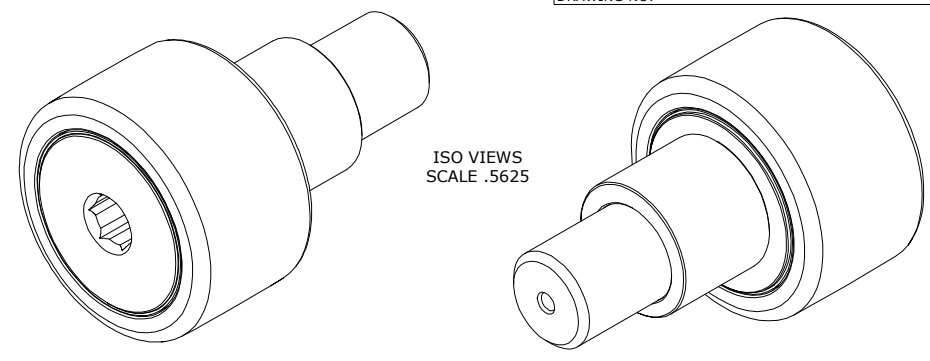


LOAD RATINGS		
RATING	lbf	Newtons
RADIAL BASIC DYNAMIC	11,720	52,133
MAXIMUM STATIC CAPACITY	16,450	73,173

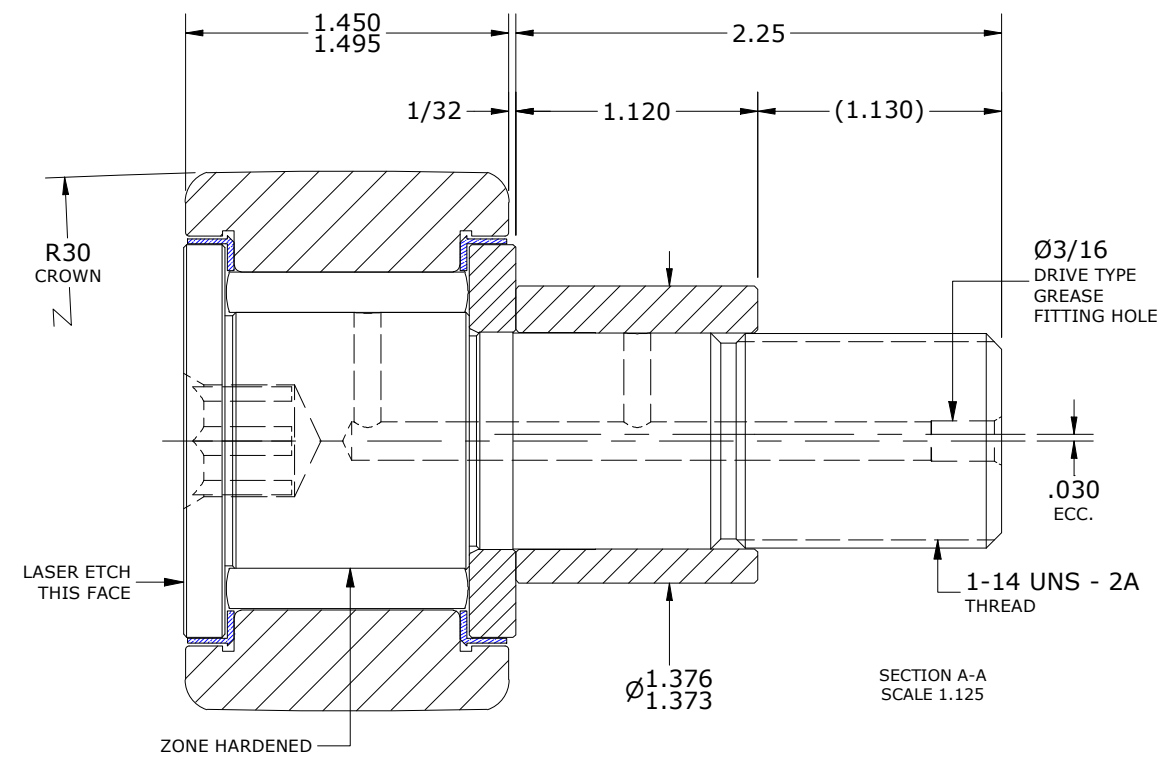
- NOTES:
- BEARING COMES PACKED WITH CARTER STANDARD FOOD GRADE H1, NLGI 2 GREASE
  - CUSTOM LASER ETCHING AVAILABLE UPON REQUEST
  - LIMITING SPEED:
    - A. GREASE = 1,050 RPM

RECOMMENDED MOUNTING HOLE Ø		
Limit	Inch	mm
MIN	1.377	34.9758
MAX	1.379	35.0266

MAXIMUM CLAMPING TORQUE*	
Inch lbf	Nm
1,125	127



HEAD: END VIEW  
SCALE 1.125



SECTION A-A  
SCALE 1.125

\*\*TORQUE SPECIFICATION IS BASED ON LUBRICATED THREADS, IF USING DRY THREADS DOUBLE TORQUE VALUE

**MATERIAL NOTES:**  
 OUTER RING: 440C STAINLESS STEEL, HEAT TREATED  
 STUD: 440C STAINLESS STEEL, ZONE HARDENED  
 WASHER: 440C STAINLESS STEEL, HEAT TREATED  
 NEEDLE ROLLER(S): 440C STAINLESS STEEL, HEAT TREATED  
 ECCENTRIC SLEEVE: 300 SERIES STAINLESS STEEL  
 SEAL(S): SYNTHETIC

CUSTOMER PART#	XX = ± .01 XXX = ± .005 XXXX = ± .0005 ANGLES = ± 2' INCH [METRIC] FRACTION = ± 1/64
<b>ENGINEERING CHANGE ORDER NOTE</b>	

CARTER MANUFACTURING IS NOT RESPONSIBLE FOR TYPOGRAPHICAL ERRORS				<b>CARTER MANUFACTURING CO., INC.</b> GRAND HAVEN, MICHIGAN 49417			
<b>REVISION</b>		PART NAME: ASSEMBLY		PRODUCT TYPE: Xtenda™			
<b>B</b>	AUTHOR BY HG	DRAWN BY SGW	CHK'D BY MD	SALES NC	MATERIAL NOTED		
REVISION BY SGW	DATE 7/20/2022	DATE 3/11/2010	DATE 7/20/2022	DATE 7/20/2022	SHEET 1 OF 2		