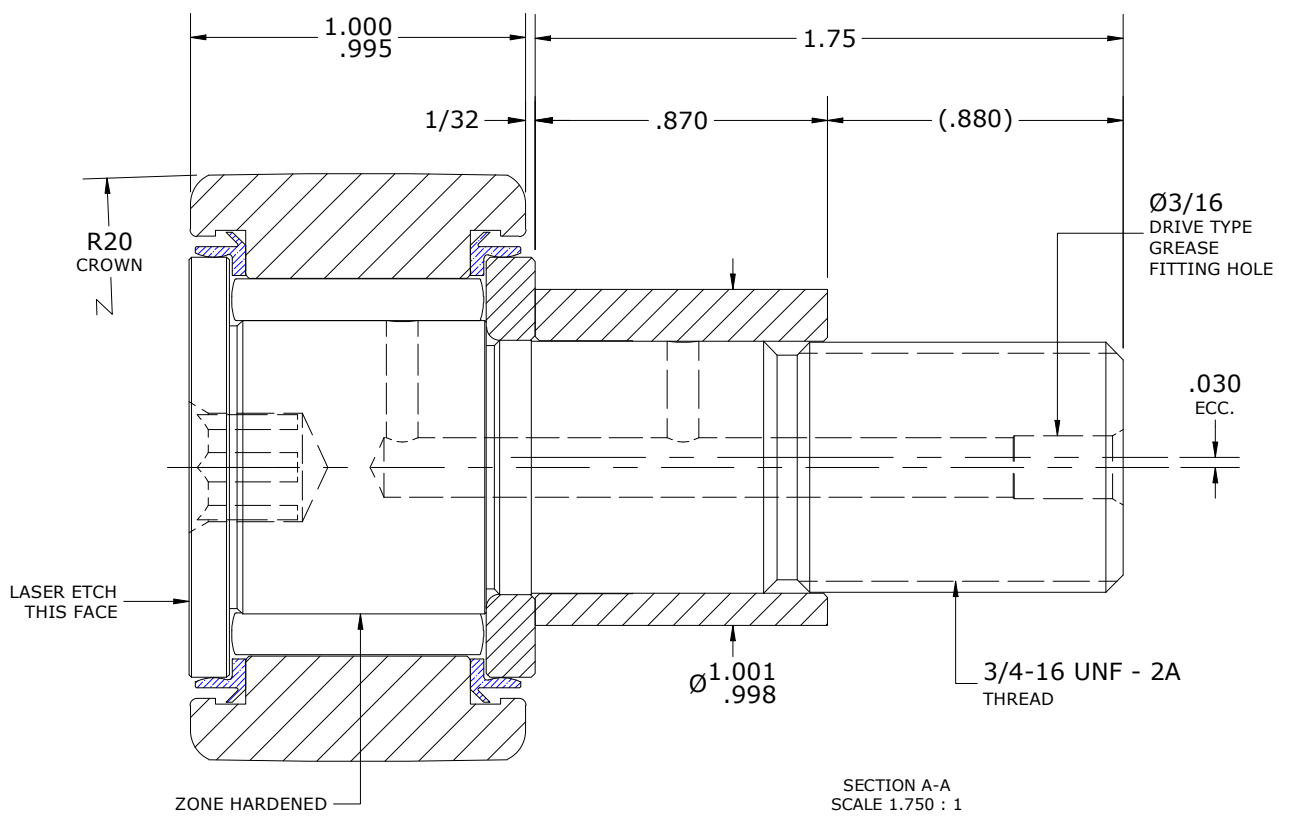
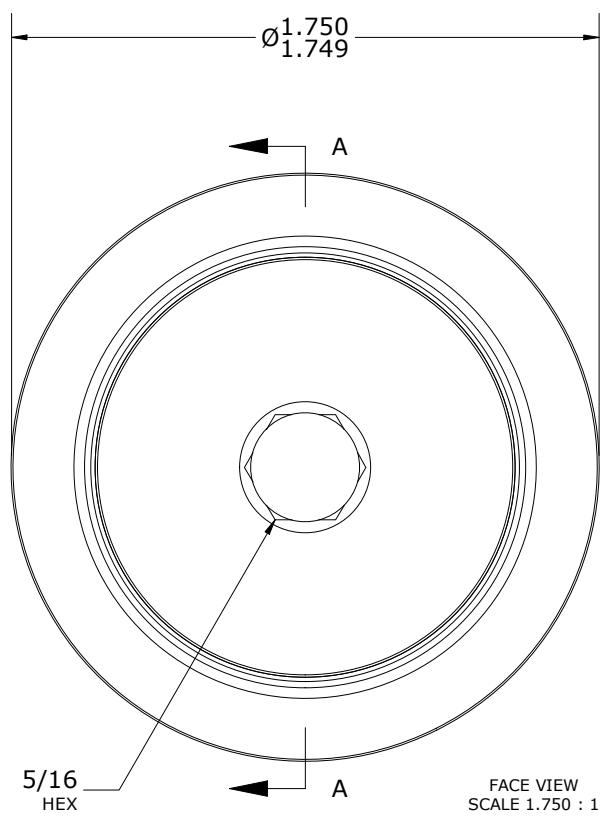
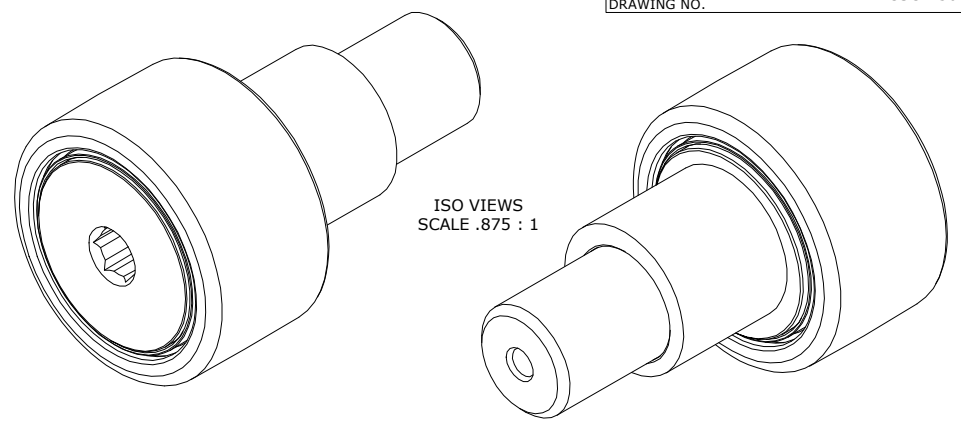


LOAD RATINGS		
RATING	lbf	Newtons
RADIAL BASIC DYNAMIC	5,730	25,488
MAXIMUM STATIC CAPACITY	6,000	26,689

- NOTES:
1. BEARING IS PACKED WITH NLGI 2, FOOD GRADE, H1 GREASE (UNLESS OTHERWISE SPECIFIED)
 2. CUSTOM LASER ETCHING AVAILABLE UPON REQUEST
 3. LIMITING SPEED:
 - A. GREASE = 2,200 RPM

RECOMMENDED MOUNTING HOLE Ø		
Limit	Inch	mm
MIN	1.002	25.4508
MAX	1.004	25.5016

MAXIMUM CLAMPING TORQUE**		
Thread Type	Inch lbf	Nm
LUBRICATED	625	70.6



**TORQUE SPECIFICATION IS BASED ON LUBRICATED THREADS, IF USING DRY THREADS DOUBLE TORQUE VALUE

MATERIAL NOTES:

- OUTER RING - 440C STAINLESS STEEL, HEAT TREATED
- STUD - 440C STAINLESS STEEL, ZONE HARDENED
- WASHER - 440C STAINLESS STEEL, HEAT TREATED
- NEEDLE ROLLER(S) - 440C STAINLESS STEEL, HEAT TREATED
- ECCENTRIC SLEEVE - 300 SERIES STAINLESS STEEL
- SEAL(S) - SYNTHETIC

<i>CUSTOMER PART#</i>	XX = ± .01 XXX = ± .005 XXXX = ± .0005 ANGLES = ± 2' INCH [METRIC] FRACTION = ± 1/64
<i>ENGINEERING CHANGE ORDER NOTE</i>	
CARTER STANDARD SURFACE FINISH IS MEASURED IN "Ra" UNITS UNLESS OTHERWISE SPECIFIED.	

CARTER MANUFACTURING IS NOT RESPONSIBLE FOR TYPOGRAPHICAL ERRORS				CARTER MANUFACTURING CO., INC. GRAND HAVEN, MICHIGAN 49417			
<i>REVISION</i>				PART NAME: ASSEMBLY		PRODUCT TYPE: Xtenda™	
C	<i>AUTHOR BY</i>	<i>DRAWN BY</i>	<i>CHK'D BY</i>	<i>SALES</i>	<i>MATERIAL</i>		
	HG	JAF	MD	NC	NOTED		
<i>REVISION BY</i>	<i>DATE</i>	<i>DATE</i>	<i>DATE</i>	<i>DATE</i>	<i>SHEET</i>		
DJB	10/2/2024	7/25/2006	10/2/2024	10/2/2024	1 OF 2		