

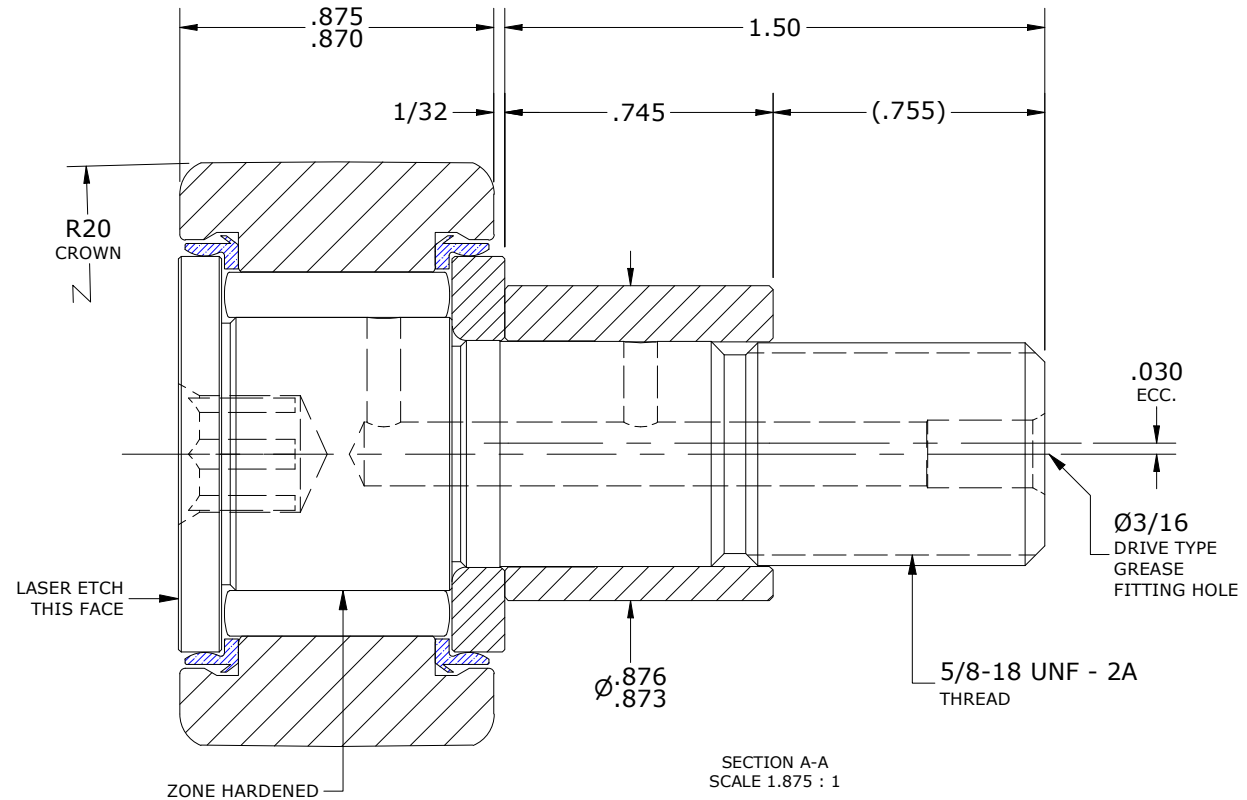
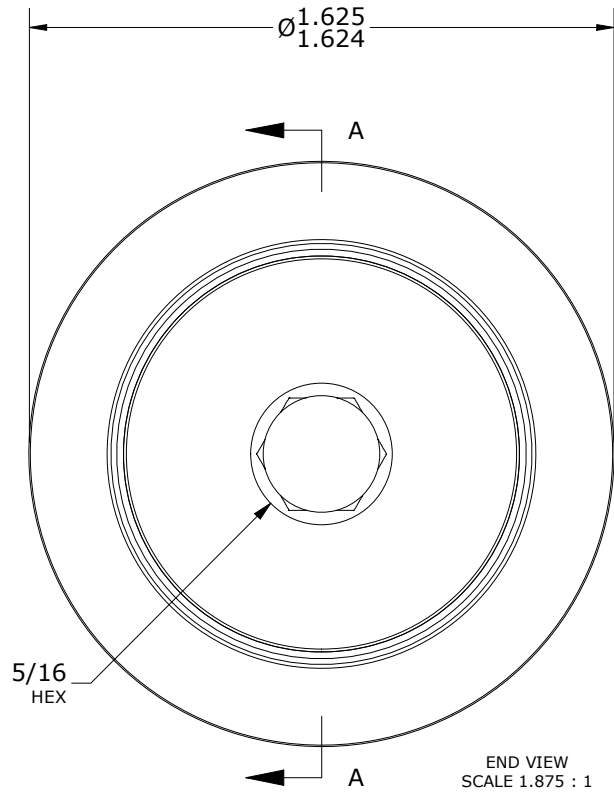
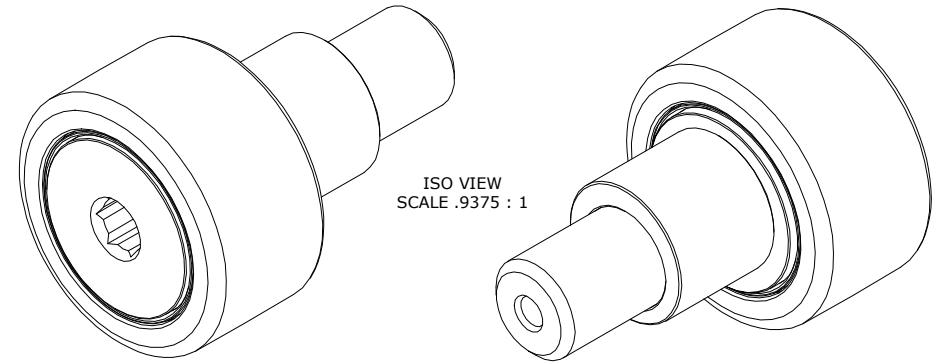
LOAD RATINGS		
RATING	Lbf	Newtons
RADIAL BASIC DYNAMIC	4,840	21,529
MAXIMUM STATIC CAPACITY	5,640	25,088

- NOTES:
- BEARING IS PACKED WITH NLGI GRADE 2, FOOD GRADE H1 GREASE (UNLESS OTHERWISE SPECIFIED)
 - LIMITING SPEED:
A. GREASE = 2,350 RPM
 - CUSTOM LASER ETCHING AVAILABLE UPON REQUEST

DRAWING NO. CSCE-52-SB

RECOMMENDED MOUNTING HOLE Ø		
Limit	Inch	mm
MIN	.877	22.279
MAX	.879	22.327

MAXIMUM CLAMPING TORQUE**		
Thread Type	Inch lbf	Nm
LUBRICATED	325	36.5



** (TORQUE SPECIFICATION IS BASED ON LUBRICATED THREADS, IF USING DRY THREADS DOUBLE TORQUE VALUE)

MATERIAL NOTES:

- OUTER RING - 440C STAINLESS STEEL, HEAT TREATED
- STUD - 440C STAINLESS STEEL, ZONE HARDENED
- NEEDLE ROLLER(S) - 440C STAINLESS STEEL, HEAT TREATED
- WASHER - 440C STAINLESS STEEL, HEAT TREATED
- ECCENTRIC SLEEVE - 300 SERIES STAINLESS STEEL
- SEAL(S) - SYNTHETIC

CUSTOMER PART#	XX = ± .01 XXX = ± .005 XXXX = ± .0005 ANGLES = ± 2' INCH [METRIC] FRACTION = ± 1/64
ENGINEERING CHANGE ORDER NOTE	

CARTER MANUFACTURING IS NOT RESPONSIBLE FOR TYPOGRAPHICAL ERRORS				CARTER MANUFACTURING CO., INC. GRAND HAVEN, MICHIGAN 49417	
REVISION		PART NAME: ASSEMBLY		PRODUCT TYPE: Xtenda™	
C	AUTHOR BY HG	DRAWN BY JAF	CHK'D BY SGW	SALES NC	MATERIAL NOTED
REVISION BY DJB	DATE 7/14/2023	DATE 7/25/2006	DATE 7/14/2023	DATE 7/14/2023	SHEET 1 OF 2