

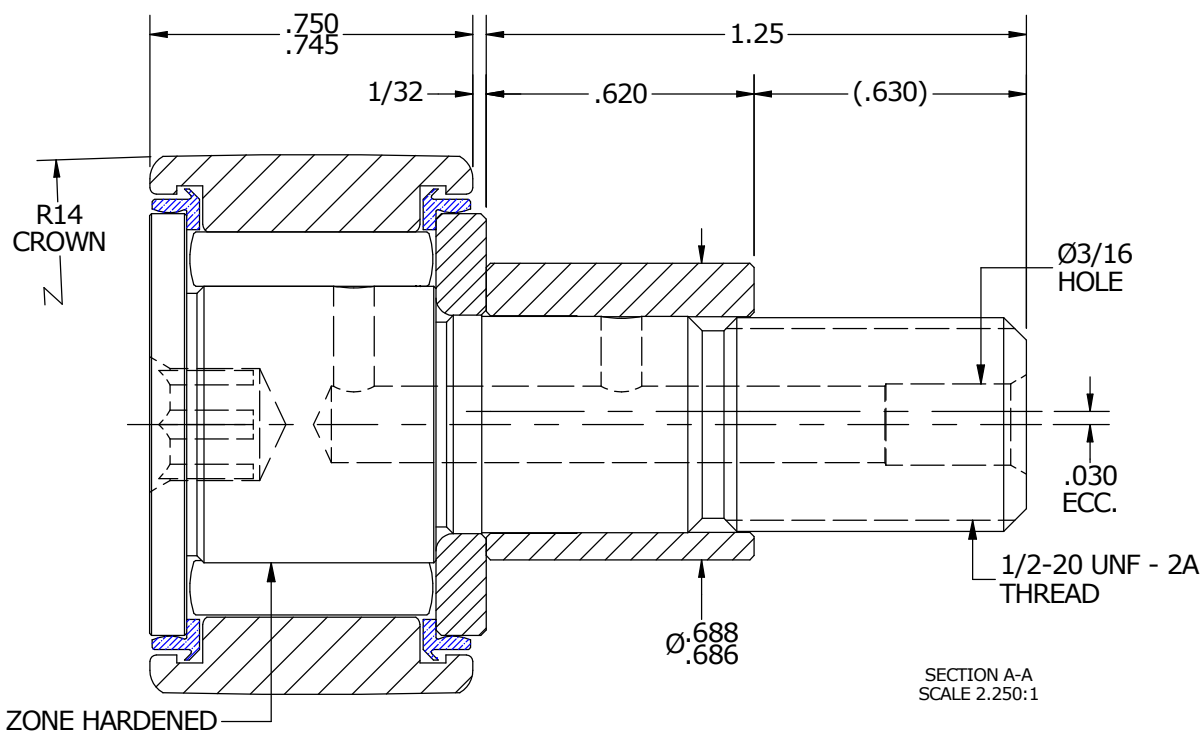
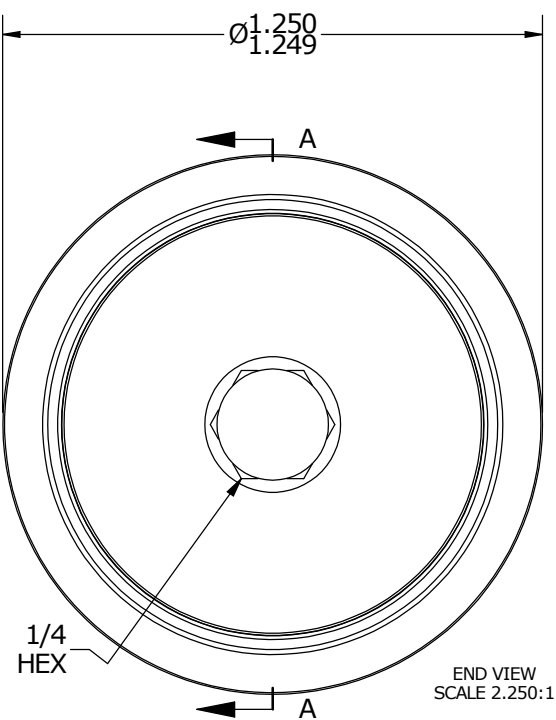
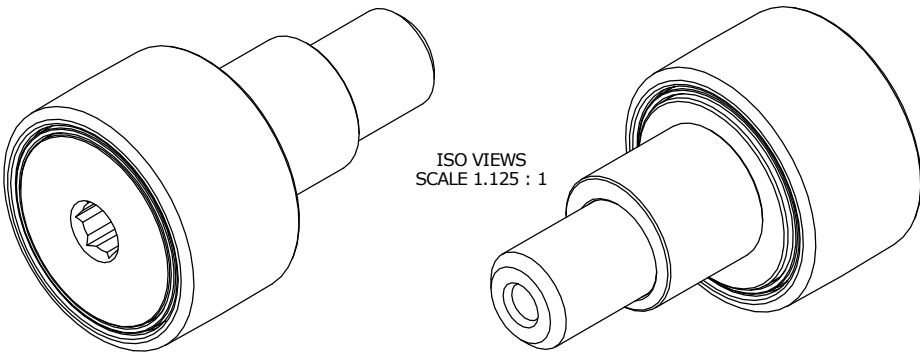
LOAD RATINGS		
RATING	lbf	Newtons
RADIAL BASIC DYNAMIC	3,530	15,702
MAXIMUM STATIC CAPACITY	2,300	10,231

RECOMMENDED MOUNTING HOLE Ø		
Limit	Inch	mm
MIN	.689	17.501
MAX	.691	17.551

MAXIMUM CLAMPING TORQUE		
Thread Type	Inch Lbs	Nm
DRY	350	40
LUBRICATED	175	20

NOTES:  
 1. BEARING IS PACKED WITH NLGI GRADE 2, FOOD GRADE H1 GREASE (UNLESS OTHERWISE SPECIFIED)

MS NO.	NSN NO.	DRAWING NO.	CSCE-40-SB
--------	---------	-------------	------------



MATERIAL NOTES:  OUTER RING - 440C STAINLESS STEEL, HEAT TREATED STUD - 440C STAINLESS STEEL, ZONE HARDENED NEEDLE ROLLER(S) - 440C STAINLESS STEEL, HEAT TREATED WASHER - 440C STAINLESS STEEL, HEAT TREATED ECCENTRIC SLEEVE - 300 SERIES STAINLESS STEEL SEAL(S) - SYNTHETIC	CUSTOMER PART#	XX = ± .01 XXX = ± .005 XXXX = ± .0005 ANGLES = ± 1° INCH [METRIC] FRACTION = ± 1/32	CARTER MANUFACTURING IS NOT RESPONSIBLE FOR TYPOGRAPHICAL ERRORS		<b>CARTER MANUFACTURING CO., INC.</b> GRAND HAVEN, MICHIGAN 49417				
	ENGINEERING CHANGE ORDER NOTE		REVISION		PART NAME: ASSEMBLY				
			B	AUTHOR BY HG	DRAWN BY JAF	CHK'D BY MD	SALES KR	MATERIAL NOTED	
			REVISION BY SGW	DATE 6/30/2016	DATE 7/25/2006	DATE 6/14/2016	DATE 7/15/2016	SHEET 1 OF 2	