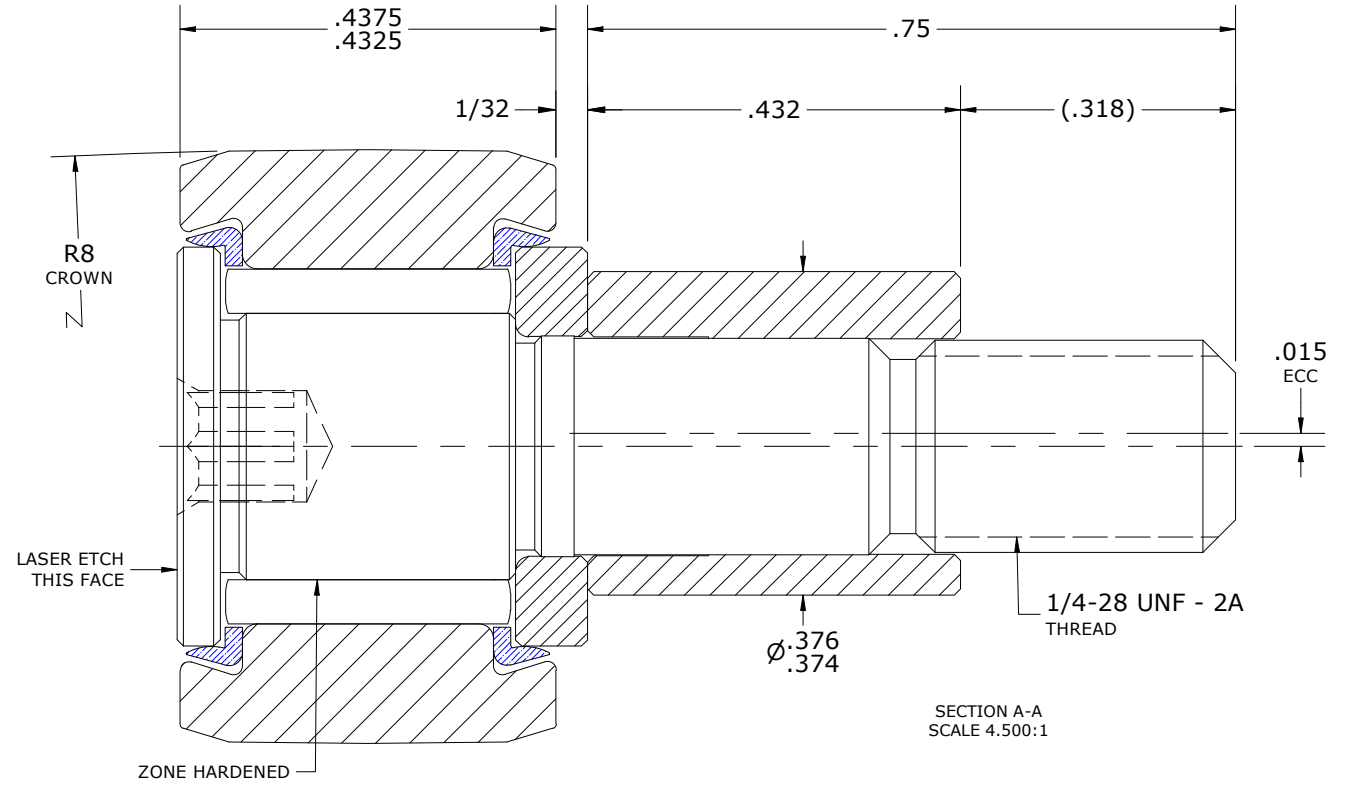
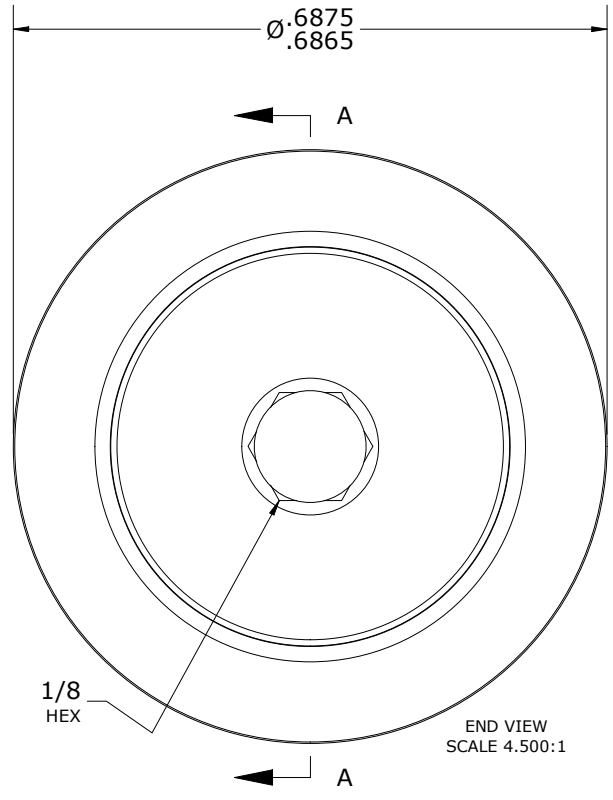
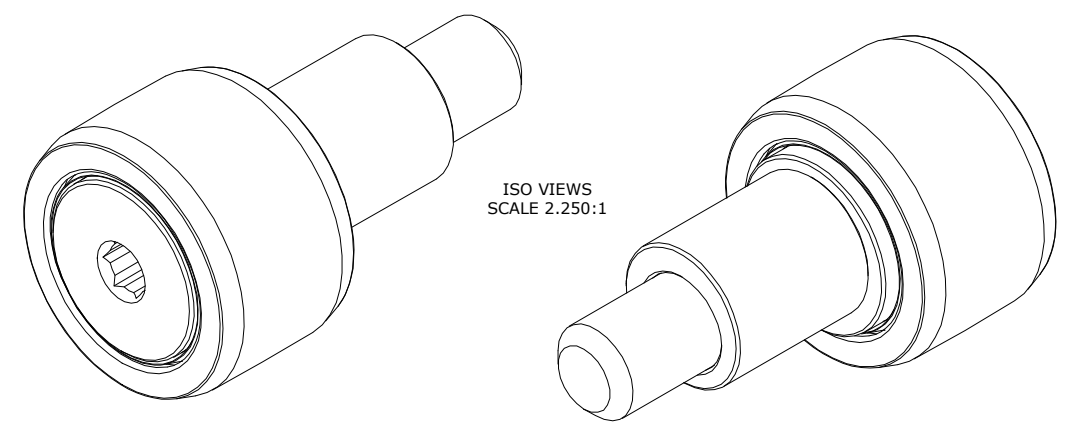


LOAD RATINGS		
RATING	lbf	Newtons
RADIAL BASIC DYNAMIC	860	3,825
MAXIMUM STATIC CAPACITY	600	2,669

- NOTES:
- BEARING COMES PACKED WITH CARTER STANDARD FOOD GRADE H1, NLGI 2 GREASE(UNLESS OTHERWISE SPECIFIED)
  - LIMITING SPEED:
    - A. GREASE = 8,300 RPM
  - CUSTOM LASER ETCHING AVAILABLE UPON REQUEST

RECOMMENDED MOUNTING HOLE Ø		
Limit	Inch	mm
MIN	.377	9.5758
MAX	.379	9.6266

MAXIMUM CLAMPING TORQUE**		
Thread Type	Inch Lbs	Nm
LUBRICATED	17.5	1.98



**MATERIAL NOTES:**

OUTER RING - 440C STAINLESS STEEL, HEAT TREATED  
 STUD - 440C STAINLESS STEEL, ZONE HARDENED  
 WASHER - 440C STAINLESS STEEL, HEAT TREATED  
 NEEDLE ROLLER(S) - 440C STAINLESS STEEL, HEAT TREATED  
 ECCENTRIC SLEEVE - 300 SERIES STAINLESS STEEL  
 SEAL(S) - SYNTHETIC

<i>CUSTOMER PART#</i>	XX = ± .01 XXX = ± .005 XXXX = ± .0005 ANGLES = ± 2' INCH [METRIC] FRACTION = ± 1/64
<i>ENGINEERING CHANGE ORDER NOTE</i>	
CARTER STANDARD SURFACE FINISH IS MEASURED IN "Ra" UNITS UNLESS OTHERWISE SPECIFIED.	

CARTER MANUFACTURING IS NOT RESPONSIBLE FOR TYPOGRAPHICAL ERRORS

REVISION	
<b>B</b>	AUTHOR BY HG
REVISION BY SGW	DATE 1/29/2015

**CARTER MANUFACTURING CO., INC.**  
 GRAND HAVEN, MICHIGAN 49417

PART NAME: ASSEMBLY				PRODUCT TYPE: Xtenda™	
DRAWN BY JAF	CHK'D BY MD	SALES KR	MATERIAL NOTED		
DATE 7/25/2006	DATE 1/23/2015	DATE 1/29/2015	SHEET 1 OF 2		