

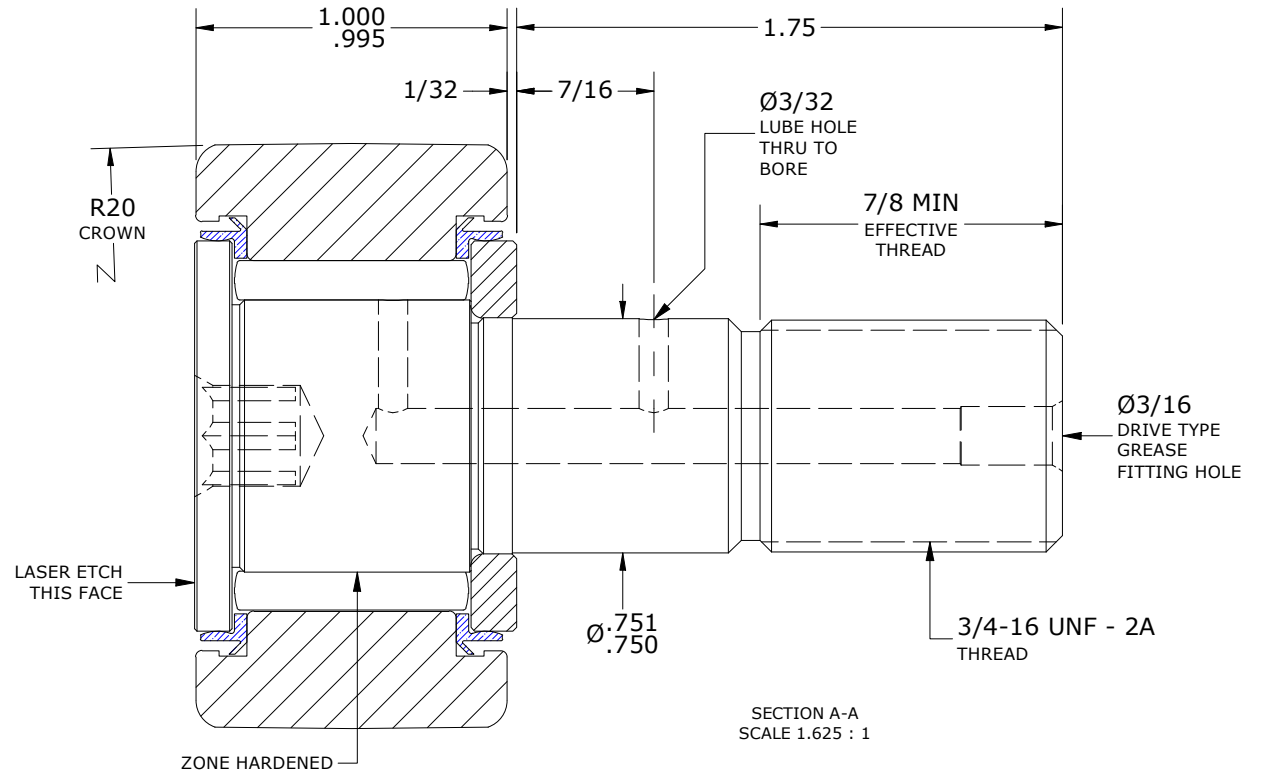
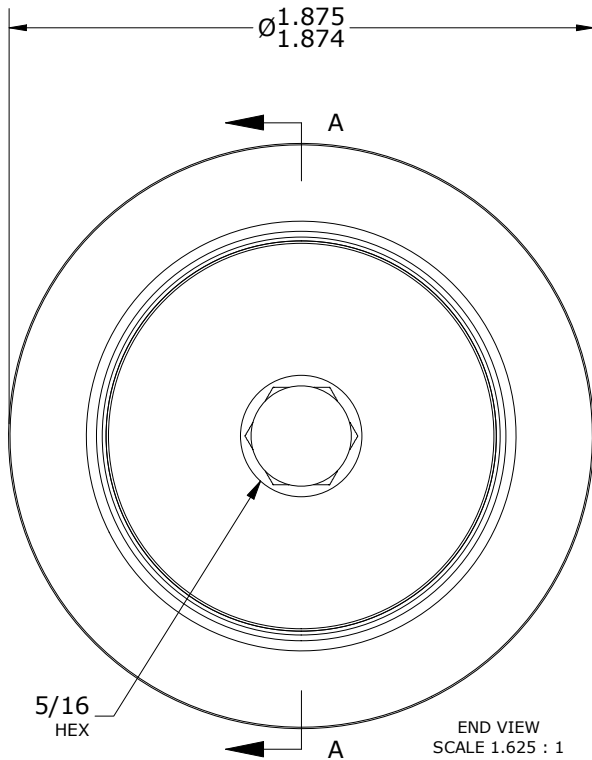
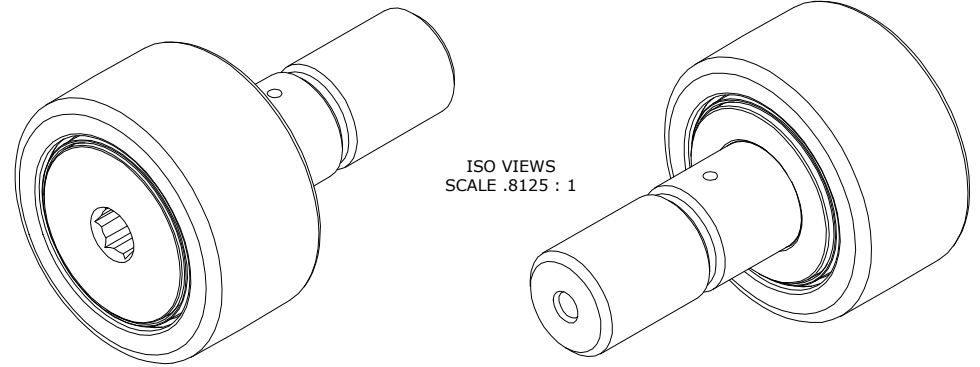
LOAD RATINGS		
RATING	lbf	Newtons
RADIAL BASIC DYNAMIC	5,730	25,488
MAXIMUM STATIC CAPACITY	6,000	26,689

RECOMMENDED MOUNTING HOLE Ø		
Limit	Inch	mm
MIN	.7500	19.0500
MAX	.7505	19.0627

MAXIMUM CLAMPING TORQUE**		
Thread Type	Inch lbf	Nm
LUBRICATED	625	70.5

- NOTES:
- BEARING IS PACKED WITH NLGI GRADE 2, FOOD GRADE H1 GREASE UNLESS OTHERWISE SPECIFIED
  - LIMITING SPEED:
    - GREASE = 2,000 RPM
  - CUSTOM LASER ETCHING AVAILABLE UPON REQUEST

MS NO. \_\_\_\_\_ NSN NO. \_\_\_\_\_ DRAWING NO. CSC-60-SB



\*\*TORQUE SPECIFICATION IS BASED ON LUBRICATED THREADS, IF USING DRY THREADS DOUBLE TORQUE VALUE

MATERIAL NOTES:

OUTER RING - 440C STAINLESS STEEL, HEAT TREATED  
 STUD - 440C STAINLESS STEEL, ZONE HARDENED  
 WASHER - 440C STAINLESS STEEL, HEAT TREATED  
 NEEDLE ROLLER(S) - 440C STAINLESS STEEL, HEAT TREATED  
 SEAL(S) - SYNTHETIC

CUSTOMER PART#

XX = ± .01  
 XXX = ± .005  
 XXXX = ± .0005  
 ANGLES = ± 1'  
 INCH [METRIC]  
 FRACTION = ± 1/32

CARTER MANUFACTURING IS  
 NOT RESPONSIBLE FOR  
 TYPOGRAPHICAL ERRORS

**CARTER MANUFACTURING CO., INC.**

GRAND HAVEN, MICHIGAN 49417

ENGINEERING CHANGE ORDER NOTE

REVISION

PART NAME: ASSEMBLY

PRODUCT TYPE: SC

B

AUTHOR BY

DRAWN BY

CHK'D BY

SALES

MATERIAL

HG

JAF

MD

NC

NOTED

REVISION BY

DATE

DATE

DATE

DATE

SHEET

SGW

7/7/2021

7/25/2006

7/7/2021

7/7/2021

1 OF 2