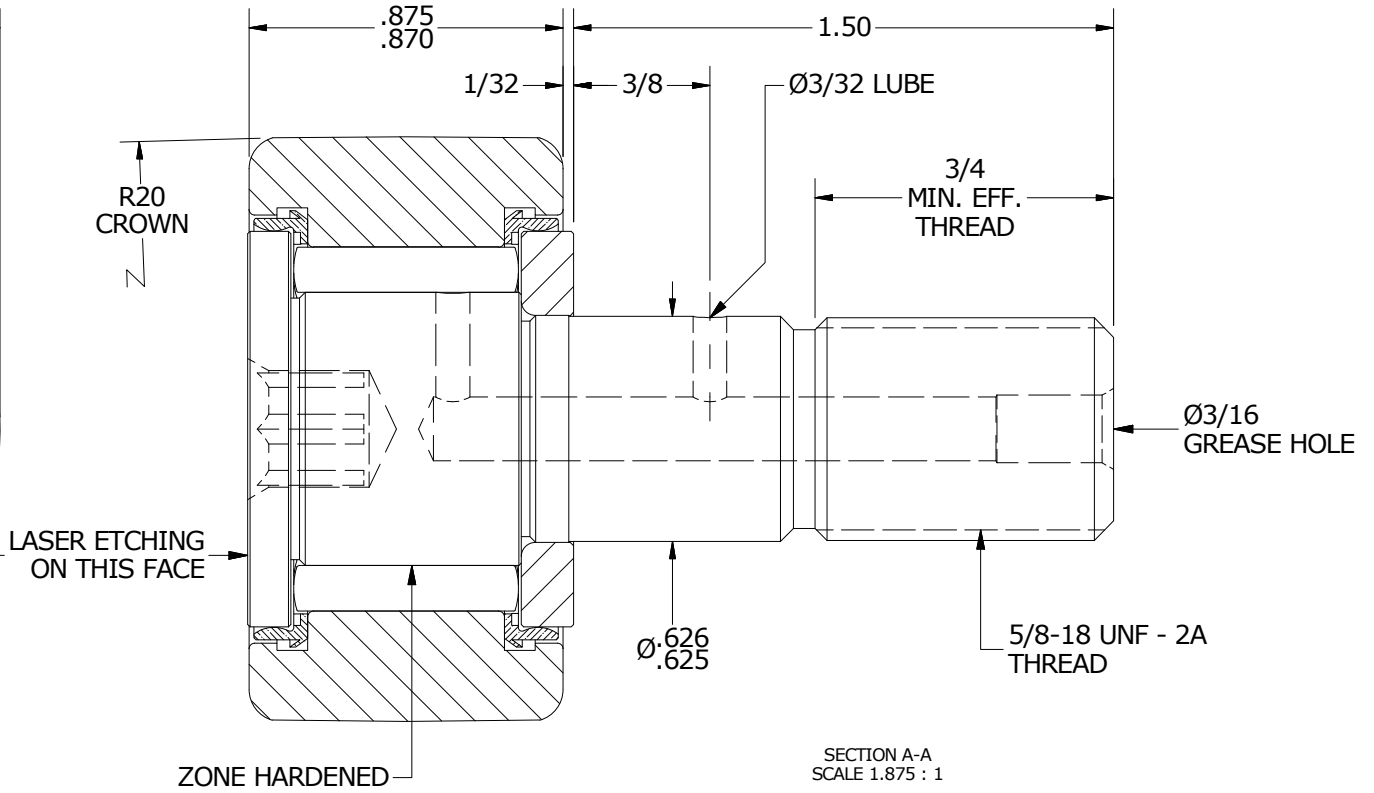
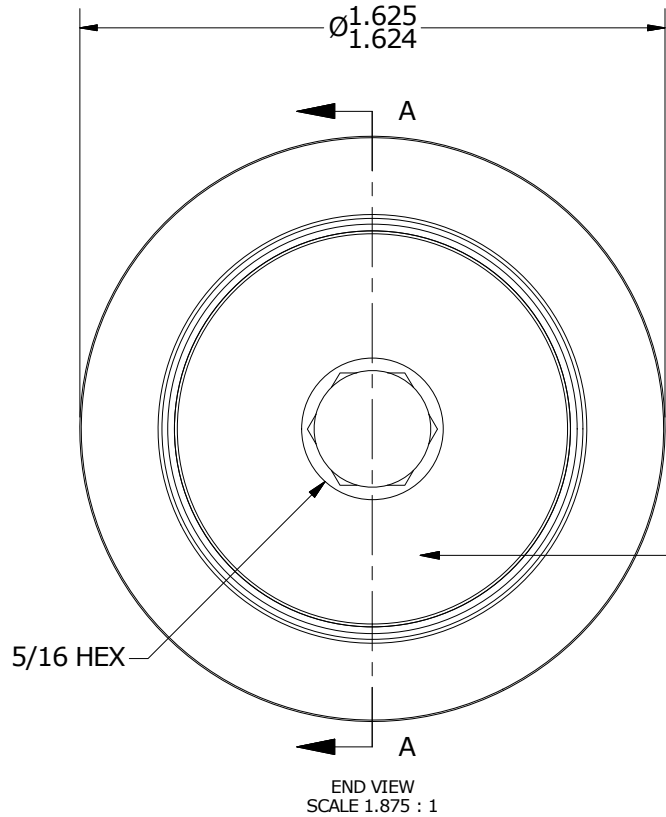
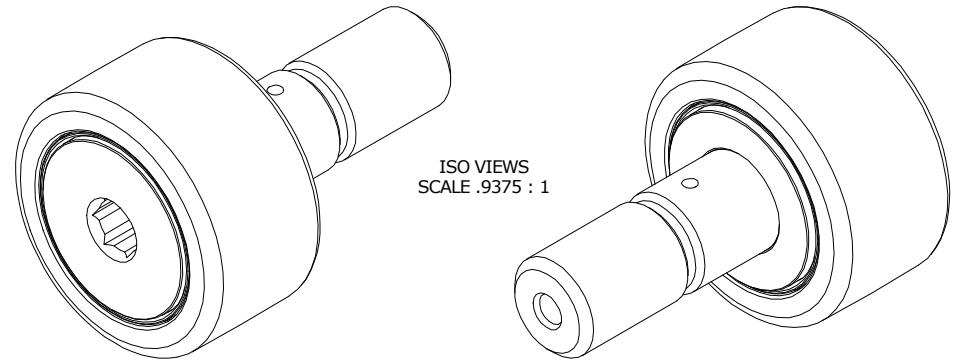


LOAD RATINGS	
RATING	Lbs
RADIAL BASIC DYNAMIC	4,350
MAXIMUM STATIC CAPACITY	4,000

- NOTES:  
 1. BEARING IS PACKED WITH NLGI GRADE 2, H1, FOOD GREASE UNLESS OTHERWISE SPECIFIED  
 2. CUSTOM LASER ETCHING AVAILABLE UPON REQUEST



MATERIAL NOTES:  
 OUTER RING - 440C STAINLESS STEEL, HEAT TREATED  
 STUD - 440C STAINLESS STEEL, ZONE HARDENED  
 NEEDLE ROLLERS - 440C STAINLESS STEEL, HEAT TREATED  
 WASHER - 440C STAINLESS STEEL, HEAT TREATED  
 SEALS - SYNTHETIC

CUSTOMER PART#	XX = ± .01 XXX = ± .005 XXXX = ± .0005 ANGLES = ± 1' INCH [METRIC] FRACTION = ± 1/32
ENGINEERING CHANGE ORDER NOTE	

CARTER MANUFACTURING IS NOT RESPONSIBLE FOR TYPOGRAPHICAL ERRORS		<b>CARTER MANUFACTURING CO., INC.</b> GRAND HAVEN, MICHIGAN 49417			
REVISION		PART NAME: ASSEMBLY		PRODUCT TYPE: SC	
<b>B</b>	AUTHOR BY HG	DRAWN BY JAF	CHK'D BY SGW	SALES KPR	MATERIAL NOTED
REVISION BY MD	DATE 6/7/2019	DATE 7/25/2006	DATE 6/7/2019	DATE 7/24/2006	SHEET 1 OF 2