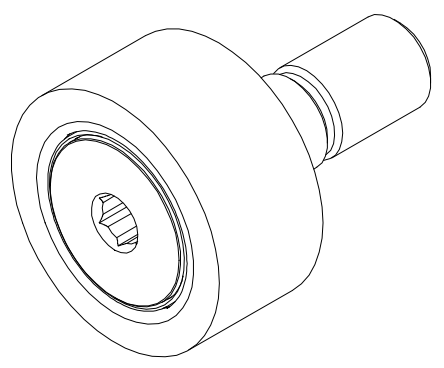


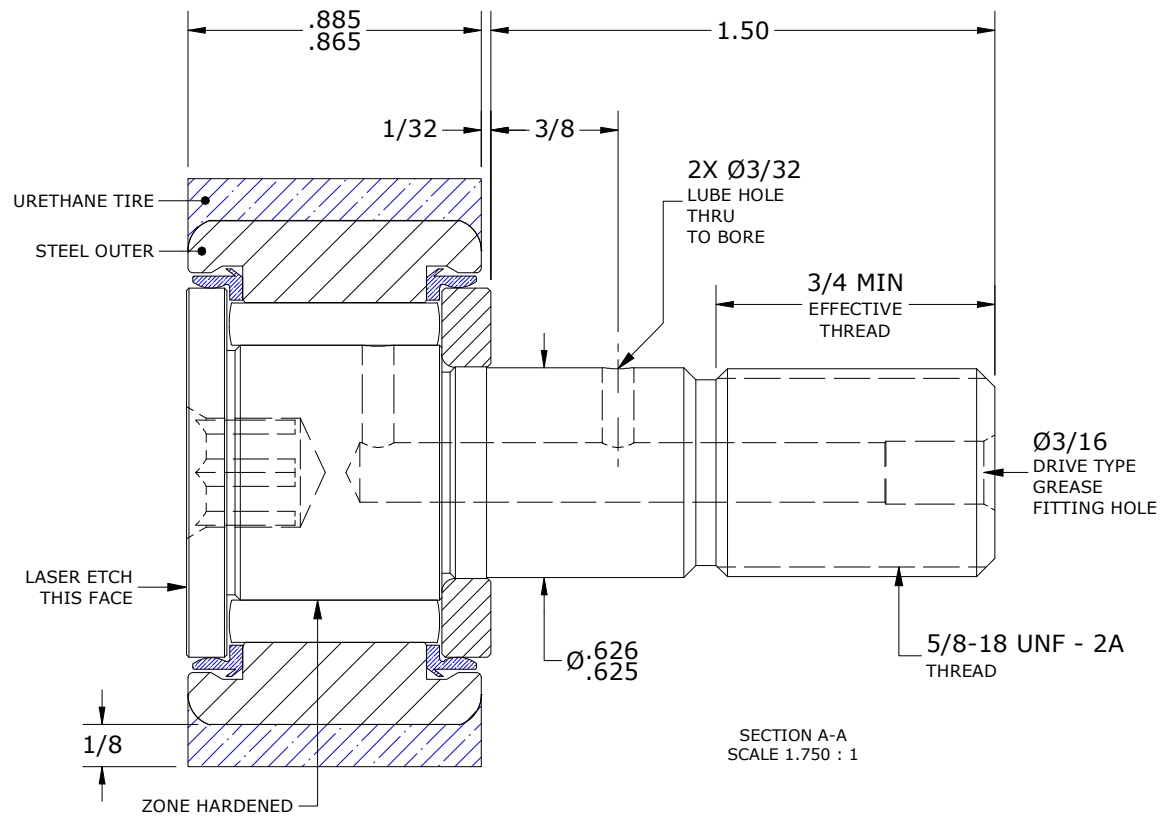
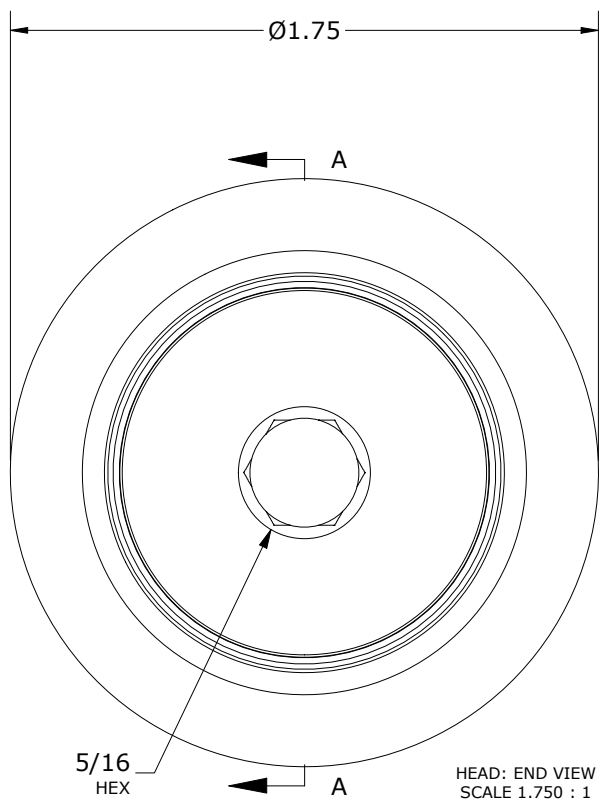
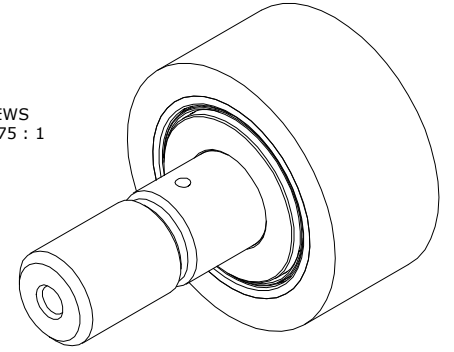
RECOMMENDED MOUNTING HOLE Ø		
Limit	Inch	mm
MIN	.6250	15.875
MAX	.6255	15.888

MAXIMUM CLAMPING TORQUE**		
Thread Type	Inch Lbs	Nm
LUBRICATED	325	36.5

- NOTES:
- BEARING IS PACKED WITH NLGI GRADE 2, LITHIUM BASED GREASE UNLESS OTHERWISE SPECIFIED
  - URETHANE SPECIFICATIONS:
    - DUROMETER = 80 SHORE A
    - COLOR = BLUE
  - ALL EXPOSED STEEL SURFACES HAVE BLACK OXIDE
  - CUSTOM LASER ETCHING AVAILABLE UPON REQUEST



ISO VIEWS  
SCALE .875 : 1



\*\*TORQUE SPECIFICATION IS BASED ON LUBRICATED THREADS, IF USING DRY THREADS DOUBLE TORQUE VALUE

MATERIAL NOTES:

OUTER RING - BEARING STEEL, HEAT TREATED  
 TIRE - URETHANE  
 STUD - BEARING STEEL, ZONE HARDENED  
 NEEDLE ROLLER(S) - BEARING STEEL, HEAT TREATED  
 WASHER - BEARING STEEL, HEAT TREATED  
 SEAL(S) - SYNTHETIC

CUSTOMER PART#	XX = ± .01 XXX = ± .005 XXXX = ± .0005 ANGLES = ± 1' INCH [METRIC] FRACTION = ± 1/32
<b>ENGINEERING CHANGE ORDER NOTE</b>	

CARTER MANUFACTURING IS NOT RESPONSIBLE FOR TYPOGRAPHICAL ERRORS				<b>CARTER MANUFACTURING CO., INC.</b> GRAND HAVEN, MICHIGAN 49417			
<b>REVISION</b>		PART NAME: Assembly		PRODUCT TYPE: CRT			
<b>D</b>	AUTHOR BY HG	DRAWN BY SGW	CHK'D BY MD	SALES KPR	MATERIAL NOTED		
REVISION BY SGW	DATE 7/20/2020	DATE 10/9/2007	DATE 7/20/2020	DATE 12/18/2008	SHEET 1 OF 2		